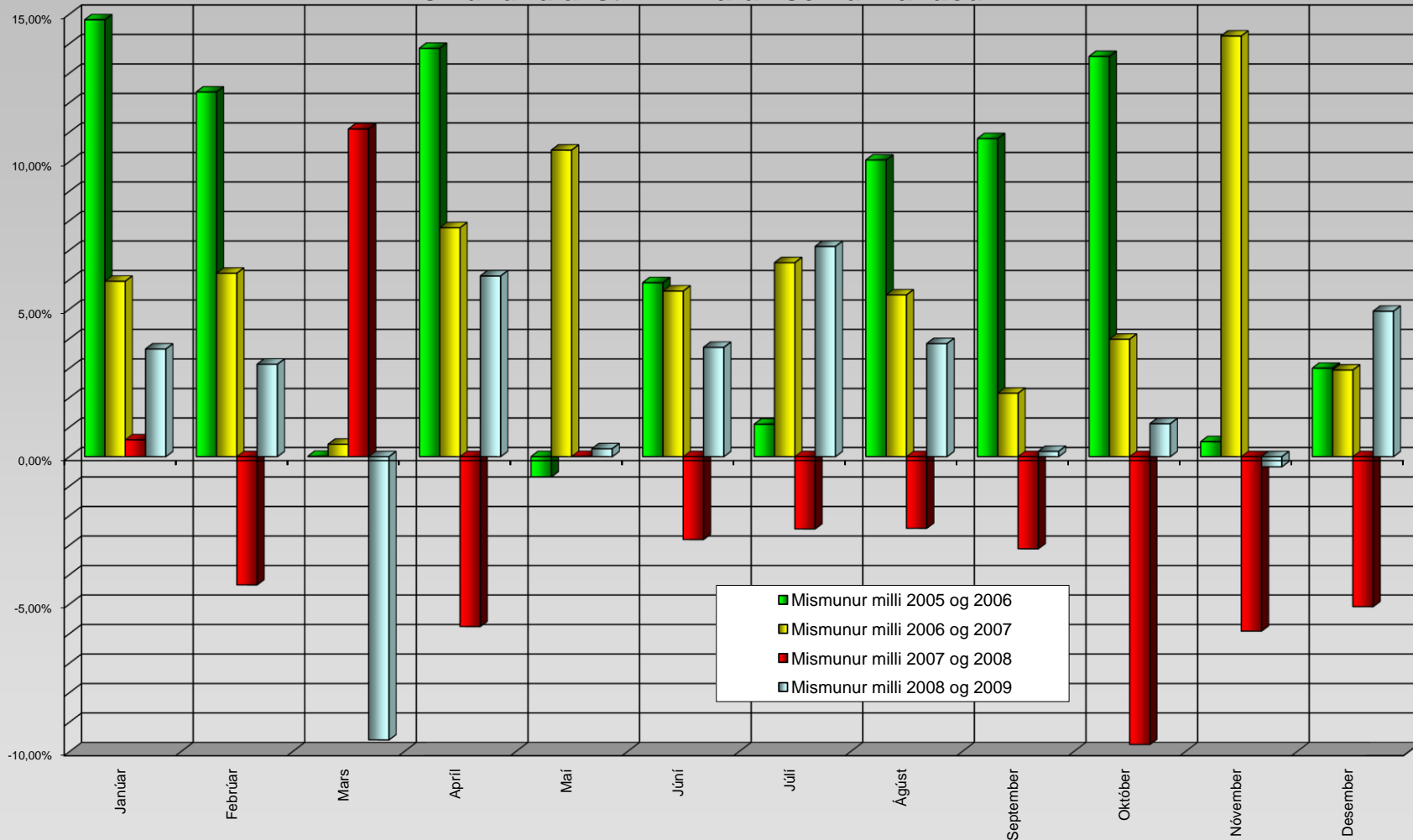


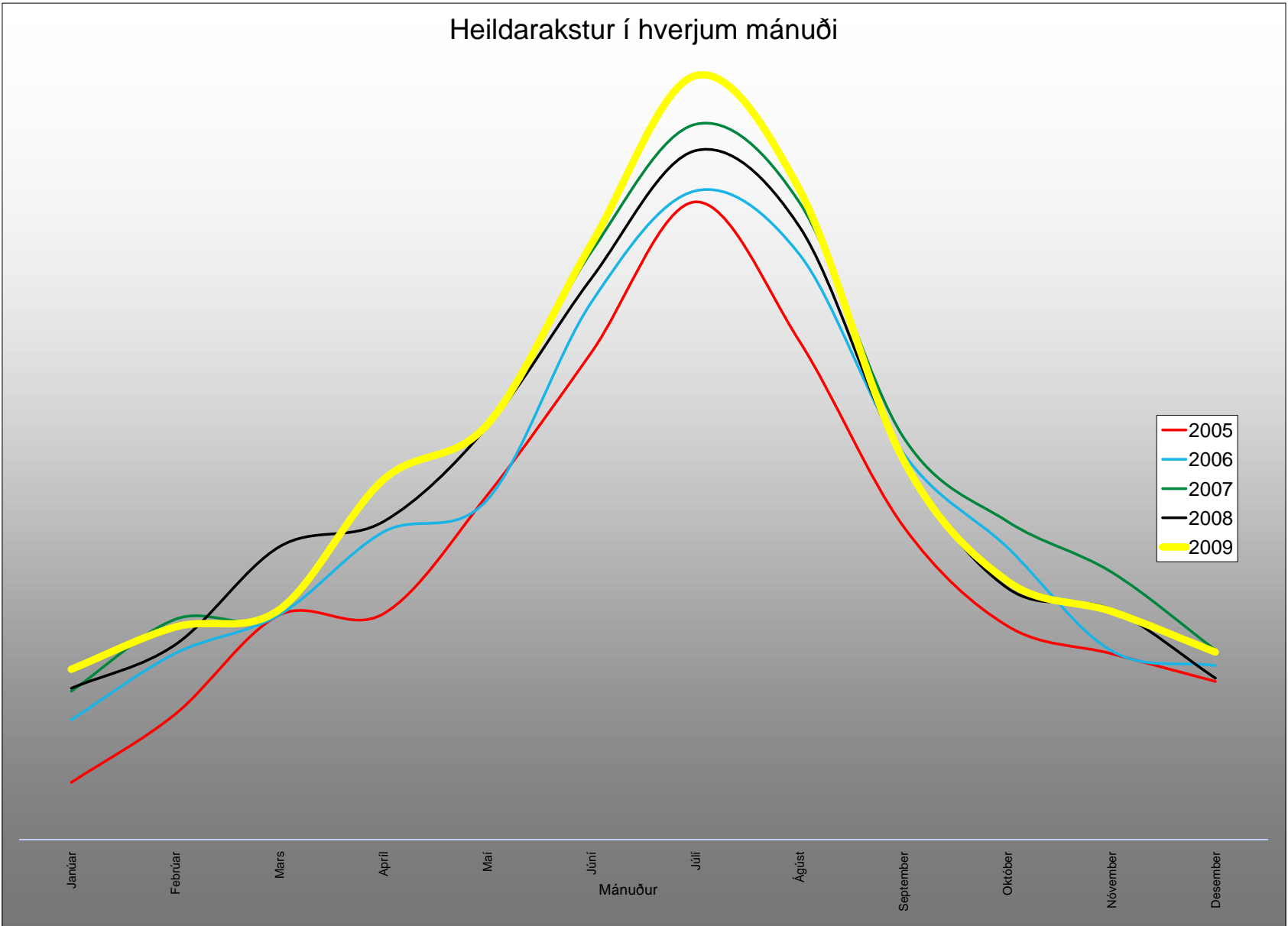
Taflan sýnir hlutfallslegan mismun meðalumferðar og heildaraksturs milli ára í sömu mánuðum eftir talningastöðum

		-----Nöfn talningastaða-----																Afstur samtals	Umferð samtals	
		Suðurland			Höfuðborgarsvæðið		Vesturland			Norðurland						Austurland				
		Hringvegur á Myrdalsandi	Hringvegur vestan Hvolisvallar	Hringvegur á Hellisheiði	Hringvegur á Geithálsi	Hringvegur við Úlfarsfell	Hringvegur um Hvalfjarðargöng	Hringvegur við Háfranjall	Hringvegur á Holtavörðunehéið	Hringvegur við Gjúfurá	Hringvegur í Óxmadal	Hringvegur í Kræklingahlíð	Hringvegur á Myvatnshéiði	Hringvegur á Myvatnsráetum	Hringvegur á Möðruisráetum	Hringvegur við Gislástaðagerði	Hringvegur við Hvalnes í Lóni			
12.09	7.62	16.63	3.41	4.78	5.76	8.41	10.99	11.68	9.9	4.92	12.64	8.78	12.03	10.28	13.26					
Ár	mán.	Vegnr.	1-b0	1-c2	1-d8	1-e2	1-f3	1-f8	1-g4	1-j1	1-k7	1-p2	1-p6	1-q9	1-r4	1-s4	1-t5	1-v2		
Mismunur milli áráanna 2005 og 2006	Janúar		31,03%	8,28%	24,51%	19,30%	2,84%	22,65%	29,47%	20,31%	11,87%	10,70%	23,24%	8,40%	25,29%	27,47%	3,79%	-5,49%	14,81%	12,16%
	Febrúar		27,45%	5,37%	22,38%	16,75%	3,16%	20,32%	22,63%	1,17%	4,41%	-3,50%	9,39%	5,00%	8,40%	15,13%	14,89%	2,00%	12,36%	10,22%
	Mars		-14,40%	-7,88%	8,28%	3,98%	3,18%	4,42%	-2,75%	-23,24%	-23,80%	-25,00%	-9,47%	-25,00%	-19,05%	-14,97%	-19,67%	-22,22%	0,01%	0,61%
	Apríl		63,51%	11,06%	20,28%	19,14%	3,05%	18,50%	25,27%	19,44%	17,76%	4,58%	2,26%	0,00%	-1,18%	3,53%	-11,70%	28,24%	13,84%	11,50%
	Mai		7,40%	-4,50%	1,22%	-2,54%	3,25%	0,70%	0,05%	-13,20%	-14,17%	-17,23%	-11,46%	-4,73%	-5,45%	-1,90%	-5,53%	-2,65%	-0,68%	-0,45%
	Júní		12,27%	1,41%	5,21%	4,05%	3,37%	8,03%	10,90%	13,68%	11,76%	6,82%	3,51%	6,25%	3,67%	12,60%	3,44%	-0,60%	5,90%	5,26%
	Júlí		-9,40%	-5,89%	-2,44%	-0,12%	3,39%	3,99%	7,12%	4,09%	2,74%	4,25%	2,02%	2,91%	7,65%	5,75%	-1,00%	-2,80%	1,10%	1,78%
	Ágúst		18,47%	11,35%	10,79%	8,97%	2,40%	6,78%	12,55%	13,86%	15,63%	27,39%	14,76%	22,36%	3,67%	19,57%	11,78%	28,28%	10,05%	8,43%
	September		8,04%	5,29%	13,85%	12,26%	4,60%	10,95%	17,87%	7,32%	9,56%	14,07%	12,29%	37,80%	3,67%	25,57%	11,85%	18,23%	10,78%	9,47%
	Óktóber		17,76%	11,91%	16,04%	7,08%	9,56%	13,90%	21,59%	13,88%	18,38%	18,06%	16,19%	28,64%	23,08%	21,27%	3,40%	19,08%	13,56%	11,86%
	Nóvember		2,84%	-2,11%	3,70%	10,01%	-0,54%	-1,47%	-3,66%	-8,44%	-7,84%	-5,96%	-2,19%	0,50%	-8,33%	-5,34%	-1,73%	-1,68%	0,50%	0,87%
	Desember		5,75%	1,46%	4,90%	8,50%	1,34%	5,41%	-4,64%	3,31%	3,70%	5,71%	1,18%	16,23%	5,00%	1,20%	0,75%	-0,98%	3,00%	2,97%
Mismunur milli áráanna 2006 og 2007	Janúar		6,58%	0,80%	9,35%	2,71%	5,04%	8,29%	7,90%	3,40%	3,30%	7,56%	-3,94%	8,89%	7,34%	6,03%	-3,65%	13,95%	5,95%	4,97%
	Febrúar		-2,56%	0,62%	6,99%	4,02%	6,35%	8,94%	4,81%	12,90%	7,84%	14,13%	4,01%	10,95%	8,53%	-11,04%	-4,32%	-2,14%	6,22%	5,95%
	Mars		6,25%	-0,22%	-2,08%	-1,92%	0,84%	3,80%	-1,57%	4,36%	1,64%	6,60%	5,76%	10,70%	6,62%	17,18%	-6,12%	16,11%	0,42%	0,62%
	Apríl		0,29%	7,35%	3,61%	4,71%	8,21%	12,94%	7,12%	11,09%	12,93%	23,84%	15,27%	24,64%	26,19%	19,32%	47,68%	-1,19%	7,76%	8,17%
	Mai		16,84%	14,25%	8,14%	10,44%	7,72%	16,57%	11,87%	17,19%	16,86%	20,82%	12,71%	17,39%	19,23%	15,94%	-2,51%	7,61%	10,39%	10,31%
	Júní		6,36%	10,75%	6,22%	7,42%	8,20%	8,54%	3,55%	-5,97%	-5,04%	0,14%	4,84%	5,29%	2,66%	1,95%	-2,30%	9,64%	5,61%	6,43%
	Júlí		7,46%	6,52%	10,20%	9,41%	9,70%	10,44%	8,91%	-4,85%	-1,82%	-4,38%	-0,92%	-1,64%	-5,76%	-5,29%	-20,17%	-0,68%	6,58%	7,22%
	Ágúst		4,12%	7,05%	5,49%	8,34%	11,34%	9,72%	8,02%	-4,27%	-4,27%	-4,26%	0,60%	-2,98%	-5,36%	-1,46%	-12,84%	-2,12%	5,48%	6,96%
	September		-1,86%	1,24%	-2,97%	0,56%	9,56%	4,55%	3,13%	0,24%	1,78%	2,42%	3,82%	-9,96%	-3,42%	-6,55%	-15,56%	-2,20%	2,15%	4,01%
	Óktóber		-4,26%	0,42%	-0,94%	13,80%	8,66%	5,15%	2,77%	-2,78%	-3,59%	1,98%	7,40%	3,18%	-2,84%	-1,72%	-9,39%	-3,21%	3,98%	6,58%
	Nóvember		1,38%	14,59%	10,54%	15,28%	16,42%	18,11%	17,09%	14,85%	14,33%	10,21%	15,45%	16,34%	17,36%	12,90%	-7,65%	0,85%	14,26%	15,37%
	Desember		-9,24%	-1,60%	1,28%	5,94%	7,90%	1,03%	-4,61%	-3,20%	-2,33%	0,00%	5,31%	-2,25%	-3,97%	-3,85%	1,48%	-5,94%	2,94%	4,45%
Mismunur milli áráanna 2007 og 2008	Janúar		-11,11%	-0,62%	-8,14%	8,12%	6,77%	3,16%	-1,91%	-2,19%	-1,01%	-5,47%	10,32%	-8,67%	-14,53%	-14,63%	-9,09%	-14,29%	0,57%	3,80%
	Febrúar		3,68%	-2,76%	-12,41%	-1,36%	3,32%	-2,28%	-5,32%	-11,09%	-9,93%	-9,21%	-2,22%	-12,88%	-16,43%	-1,54%	-27,74%	-16,84%	-4,35%	-1,51%
	Mars		23,08%	9,82%	12,91%	18,85%	5,34%	10,08%	15,76%	23,19%	24,30%	21,36%	1,36%	33,14%	4,83%	-6,85%	-29,71%	-4,03%	11,11%	10,21%
	Apríl		-25,14%	-7,73%	-7,31%	-0,74%	7,15%	-7,70%	-13,19%	-24,13%	-25,59%	-22,79%	-8,44%	-19,19%	-26,89%	-24,29%	-46,19%	-30,12%	-5,76%	-2,53%
	Mai		-16,38%	-1,94%	-0,09%	2,68%	2,42%	-2,55%	-5,84%	-0,89%	0,00%	-0,45%	3,40%	17,72%	-2,82%	-4,17%	-14,16%	-9,09%	0,01%	0,73%
	Júní		-7,36%	1,48%	1,55%	-0,57%	-2,27%	-4,19%	-6,64%	-9,35%	-7,48%	-11,80%	-7,32%	-9,36%	-11,23%	-11,46%	-18,59%	-12,36%	-2,81%	-2,90%
	Júlí		-3,12%	7,84%	-4,74%	-2,30%	-2,20%	-4,21%	-5,37%	-0,86%	-1,08%	0,85%	-0,72%	3,33%	3,37%	1,91%	1,68%	0,51%	-2,45%	-2,22%
	Ágúst		-3,96%	-1,86%	-3,21%	-3,39%	-0,36%	-0,34%	-0,98%	-5,73%	-4,26%	-6,90%	-3,33%	-0,61%	0,16%	-6,58%	-8,35%	-9,37%	-2,43%	-1,99%
	September		-0,95%	1,13%	-4,52%	-2,17%	-1,06%	-5,23%	-7,95%	-3,56%	-4,99%	-7,53%	-0,16%	5,16%	0,71%	2,72%	-5,88%	-2,70%	-3,12%	-2,53%
	Óktóber		-3,08%	-2,01%	-13,65%	-14,97%	-2,37%	-10,11%	-12,31%	-14,48%	-12,14%	-14,72%	-17,83%	-21,92%	-18,13%	-18,71%	-16,06%	-9,27%	-9,76%	-8,62%
	Nóvember		-0,45%	-1,14%	-4,31%	-14,58%	-3,67%	-6,60%	-7,92%	-10,03%	-7,71%	-8,63%	-7,00%	-10,64%	-15,49%	-13,57%	-0,64%	-13,56%	-5,91%	-6,53%
	Desember		-0,60%	4,88%	-13,76%	-9,54%	-0,01%	-2,04%	-0,47%	-3,17%	-1,75%	-4,73%	-3,93%	-2,30%	-3,31%	-0,80%	-27,01%	-11,58%	-5,08%	-3,52%
Mismunur milli áráanna 2008 og 2009	Janúar		2,78%	12,07%	11,42%	-2,41%	2,18%	0,87%	1,79%	1,40%	1,53%	4,13%	-6,35%	-1,68%	-4,00%	-1,90%	-29,17%	-8,33%	3,65%	1,83%
	Febrúar		-15,23%	9,23%	9,94%	0,29%	-0,67%	0,13%	2,52%	8,61%	10,71%	8,39%	-4,76%	6,40%	-2,56%	1,67%	-6,25%	-3,61%	3,13%	1,18%
	Mars		-26,47%	-1,33%	-11,80%	-18,59%	2,39%	-12,46%	-15,97%	-24,71%	-22,35%	-22,45%	-10,86%	-31,59%	-19,08%	-14,84%	-4,12%	-27,35%	-9,60%	-7,94%
	Apríl		42,47%	16,52%	6,06%	-4,70%	-1,21%	4,31%	13,02%	29,59%	32,52%	26,86%	6,17%	24,46%	30,97%	32,70%	7,50%	48,28%	6,12%	3,11%
	Mai		14,36%	7,79%	1,03%	-7,90%	-2,80%	-0,75%	5,58%	3,50%	6,39%	10,93%	0,30%	-2,24%	16,18%	21,30%	-3,00%	11,67%	0,27%	-1,38%
	Júní		23,34%	8,51%	1,29%	-5,48%	-1,94%	3,97%	8,42%	10,85%	13,95%	15,85%	7,41%	25,73%	28,22%	26,68%	17,04%	30,09%	3,71%	1,80%
	Júlí		22,74%	11,27%	8,96%	-2,09%	3,78%	5,17%	7,34%	7,63%	10,42%	6,87%	7,69%	12,63%	11,54%	11,74%	7,04%	18,14%	7,12%	5,28%
	Ágúst		10,91%	10,67%	3,51%	-2,78%	6,69%	-1,74%	-0,55%	-12,97%	7,73%	6,16%	6,10%	14,73%	15,43%	14,61%	12,23%	18,09%	3,83%	3,42%
	September		9,81%	0,86%	-1,30%	-11,23%	2,38%	-0,84%	-0,18%	5,33%	6,45%	7,44%	-5,74%	11,92%	14,79%	14,77%	11,67%	13,89%	0,18%	-0,83%
	Óktóber		-1,77%	1,45%	4,85%	-5,03%	-2,04%	0,17%	0,29%	2,50%	8,48%	8,14%	4,98%	20,61%	16,43%	23,02%	-0,62%	-2,19%	1,12%	-0,54%
	Nóvember		-0,46%	2,98%	-3,32%	-4,65%	1,53%	-0,52%	-0,16%	-3,35%	7,31%	6,64%	-1,11%	14,29%	14,17%	18,18%	1,28%	13,73%	-0,34%	-0,18%
	Desember		8,43%	1,78%	17,14%	-1,77%	3,17%	0,36%	3,05%	-10,38%	-1,62%	1,42%	-7,88%	1,42%	-4,92%	-8,06%	13,00%	8,33%	4,93%	2,56%

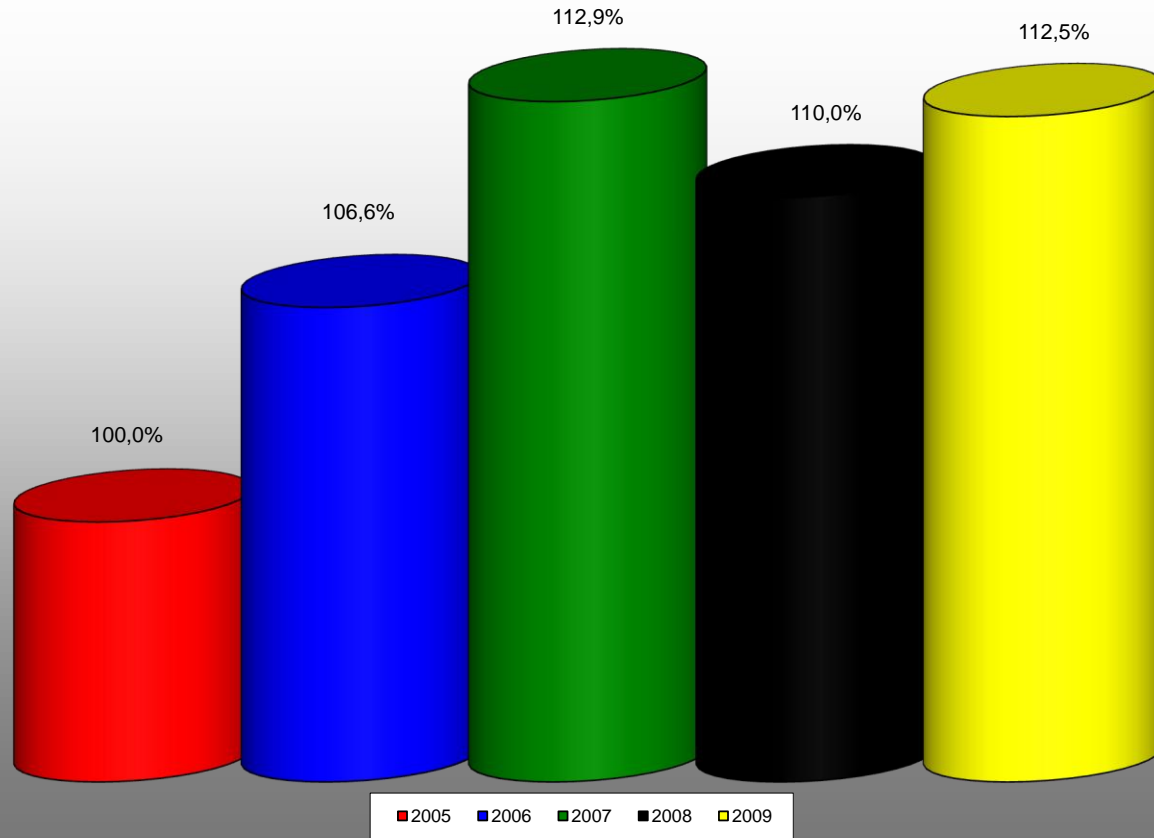
### Mismunur á akstri milli ára í sömu mánuðum



# Heildarakstur í hverjum mánuði



### Innbyrðis hlutfall heildaraksturs



## Uppsafnaður akstur á 16 völdum vegköflum á Hringvegi

