

Tafla 1. Sýnin samanlagða meðalumerð og akstur allra talingastaða eftir mánuðum.

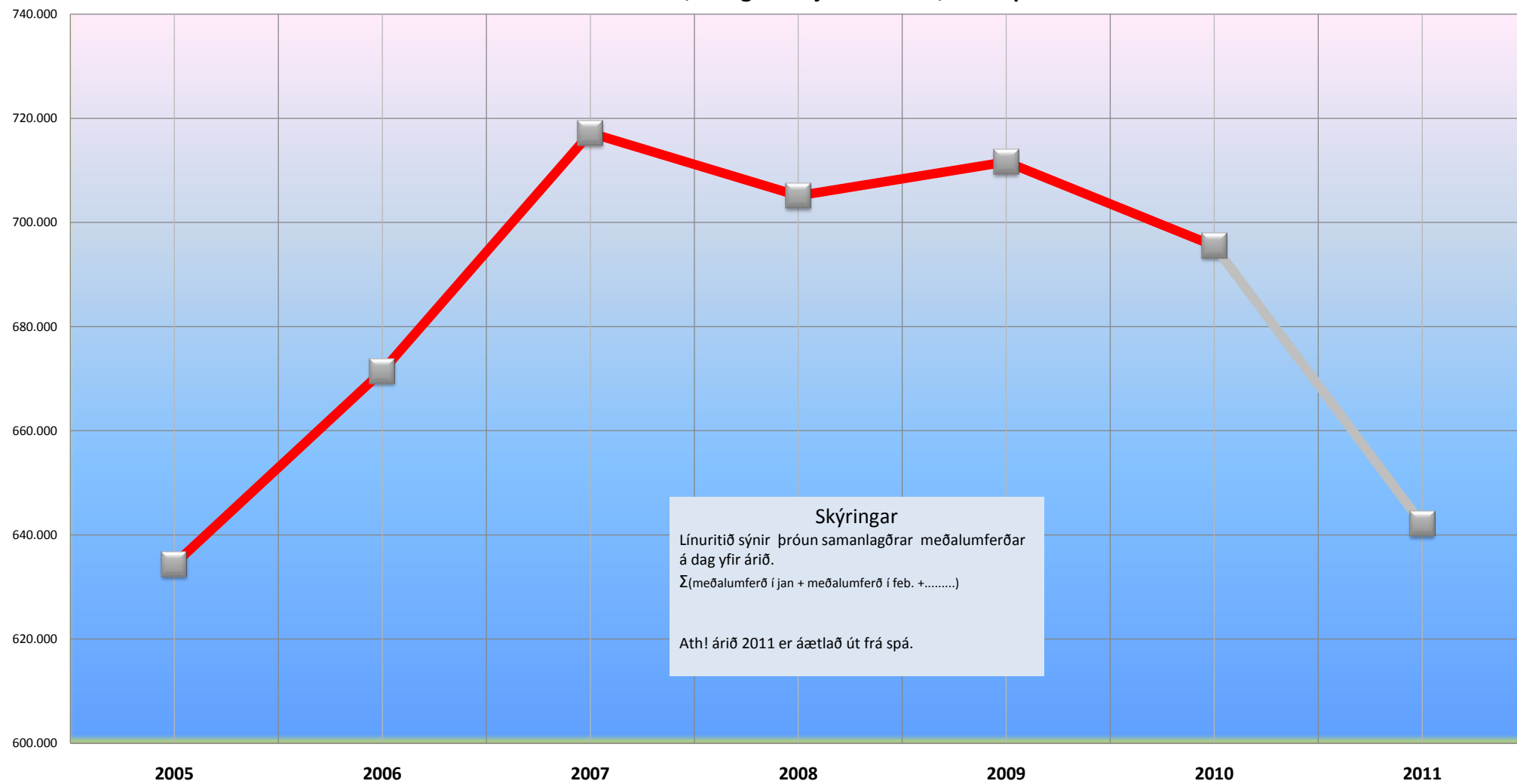
Lengd vegkíla í km -- Ár	Nöfn talingastaða																				Umferð samtals	Akstur samtals (umferð x lengd vegkíla)	
	Suðurland				Höfuðborgarsvæðið				Vesturland				Norðurland				Austurland						
	Hringvegur á Myrdalssandi	Hringvegur vestan Þróskafar	Hringvegur á Heiðaböð	Hringvegur í haldarastri álf 2010	Hringvegur á Geimlali	Hringvegur við Úlfarsdal	Hringvegur í haldarastri álf 2010	Hringvegur í haldarastri álf 2010	Hringvegur í haldarastri álf 2010	Hringvegur í haldarastri álf 2010	Hringvegur í haldarastri álf 2010	Hringvegur í haldarastri álf 2010	Hringvegur í haldarastri álf 2010	Hringvegur í haldarastri álf 2010	Hringvegur í haldarastri álf 2010	Hringvegur í haldarastri álf 2010	Hringvegur í haldarastri álf 2010	Hringvegur í haldarastri álf 2010	Hringvegur í haldarastri álf 2010	Hringvegur í haldarastri álf 2010			
1-0	1-2	1-6	3-3%	1-2	1-3	3-3%	1-4	1-4	1-4	1-4	1-4	1-4	1-4	1-4	1-4	1-4	1-4	1-4	1-4				
2005	116	1039	3509	4664	5658	17717	23375	2931	1839	586	5356	514	463	1687	166	87	2917	91	132	91	314	36626	235757
2006	152	1125	4240	5517	6750	18219	24969	3595	2381	705	6681	575	513	2079	180	109	3456	116	137	86	339	40962	268592
2007	162	1134	4688	5984	6933	19138	26071	3893	2569	729	7191	594	529	1997	196	117	3433	123	132	98	353	43032	285247
2008	144	1127	4305	5576	7496	20433	27929	4016	2520	713	7249	588	525	2203	179	100	3595	105	120	84	309	44658	286654
2009	147	1263	4728	6139	7315	20879	29194	4051	2555	723	7339	597	544	2063	176	96	3476	103	85	77	265	45413	292321
2010	149	1205	4787	6141	8510	20532	27042	3996	2567	681	7244	642	576	2038	183	105	3574	108	87	74	269	44810	292599
2011 (eink. eyndur 6/1)	168	1274	4437	5877	6525	20104	26629	4037	2592	752	7351	691	608	2226	203	113	3942	117	81	82	290	43989	289113
Samtals	4923	26669	79101	110693	105746	275695	381441	64406	46810	14191	125407	13982	11765	34319	5625	3667	69558	3342	2583	2683	8608	69507	4829205

Tafla 2. Sýnin hlutfallslegan mismun á milli ára í sömu mánuðum eftir talningastaða

Ár	Suðurland				Höfuðborgarsvæðið				Vesturland							Norðurland				Austurland				Umferðis samlaes	Ástur samlaes																								
	1-b0	1-c2	1-d8	Samlaes	1-e2	1-f3	Samlaes	1-g8	1-g4	1-j1	Samlaes	1-k7	1-p2	1-p6	1-q9	1-r4	Samlaes	1-s4	1-t5	1-v2	Samlaes																												
Mismunur milli ára 2005 og 2006	Janúar	31.03%	8.28%	20.83%	18.29%	19.30%	2.84%	6.82%	22.65%	29.47%	20.31%	24.74%	11.87%	10.80%	23.24%	8.40%	25.29%	18.48%	27.47%	3.79%	-5.49%	7.96%	11.84%	13.93%	27.45%	5.37%	17.58%	15.21%	16.75%	3.16%	6.64%	20.32%	22.63%	1.17%	18.85%	4.41%	-2.90%	9.39%	5.00%	8.40%	6.27%	15.13%	14.89%	2.00%	11.39%	9.69%	11.07%		
	Febrúar	-14.40%	-7.88%	-7.45%	3.33%	3.98%	3.18%	3.41%	-4.42%	-2.75%	-23.24%	-1.92%	-23.80%	-22.67%	-9.47%	-25.00%	-19.05%	-15.98%	-14.97%	-19.67%	-22.22%	-18.78%	0.36%	-0.42%	63.51%	11.08%	20.18%	19.53%	19.14%	3.05%	7.71%	18.50%	25.27%	19.44%	-21.03%	17.76%	3.98%	2.26%	0.00%	-1.18%	5.20%	3.53%	-11.70%	28.24%	4.87%	11.43%	13.71%		
	Mars	7.40%	-4.50%	0.74%	0.00%	-2.54%	3.25%	1.40%	0.70%	0.05%	-13.20%	-1.25%	-14.17%	-16.19%	-11.46%	-4.73%	-5.45%	-12.09%	-10.90%	-14.97%	-15.53%	-2.65%	-3.52%	-0.61%	-0.93%	Janúar	12.27%	1.41%	4.73%	4.37%	4.05%	3.37%	3.59%	8.03%	10.90%	13.68%	9.90%	11.76%	7.59%	3.51%	6.25%	3.67%	6.25%	12.60%	3.44%	-0.60%	5.29%	5.23%	5.79%
	Júní	-9.40%	-5.89%	0.21%	-1.99%	-0.12%	3.39%	2.15%	3.96%	7.12%	4.09%	5.20%	2.74%	5.05%	2.02%	2.91%	7.65%	3.23%	5.79%	-2.10%	-2.80%	0.71%	2.14%	1.88%	Febrúar	18.47%	11.35%	10.59%	11.30%	9.97%	2.40%	4.96%	6.78%	12.55%	13.96%	9.98%	15.63%	18.88%	14.76%	22.36%	3.67%	15.68%	19.57%	11.78%	28.28%	19.72%	8.47%	10.08%	
	September	16.84%	5.29%	13.47%	11.48%	12.29%	4.80%	6.97%	10.85%	17.87%	7.32%	13.02%	9.66%	13.64%	12.29%	37.80%	3.67%	13.12%	26.57%	11.85%	18.23%	18.06%	9.46%	10.71%	Oktober	17.76%	11.91%	15.73%	15.01%	7.08%	9.56%	13.90%	21.59%	13.88%	16.63%	18.38%	16.42%	16.19%	28.64%	23.08%	17.59%	21.27%	3.40%	19.08%	13.01%	11.85%	13.50%		
	Samlaes	2.84%	-2.11%	4.37%	2.99%	10.01%	-0.54%	2.28%	-1.47%	-3.66%	-8.44%	-3.02%	-7.84%	-6.28%	-2.19%	0.50%	-8.33%	-3.95%	-5.34%	-1.73%	-1.68%	-2.84%	0.89%	0.62%	Novembar	5.75%	1.46%	5.54%	4.71%	9.50%	1.34%	3.16%	5.41%	-1.64%	3.31%	1.43%	3.70%	4.71%	1.18%	16.23%	5.00%	3.05%	1.20%	0.75%	-0.98%	0.42%	3.04%	3.1%	
	Desember	9.18%	2.41%	3.01%	7.38%	7.89%	3.31%	4.65%	8.56%	10.31%	4.60%	8.70%	4.78%	3.37%	4.62%	8.40%	3.67%	4.77%	9.84%	1.77%	6.84%	5.85%	6.51%	Samlaes	6.58%	0.80%	10.57%	8.46%	2.71%	5.04%	4.41%	8.29%	7.90%	3.40%	7.63%	3.30%	3.12%	-3.94%	8.89%	7.34%	-0.67%	6.03%	-3.65%	13.95%	4.13%	5.05%	6.20%		
Mismunur milli ára 2006 og 2007	Janúar	-2.56%	0.62%	7.96%	6.20%	4.02%	6.35%	5.70%	8.94%	4.81%	12.90%	7.85%	7.84%	12.63%	4.01%	10.95%	8.53%	6.46%	-11.04%	-4.32%	-2.14%	-6.06%	6.09%	6.53%	Febrúar	6.25%	-0.22%	-1.44%	-0.98%	-1.92%	0.84%	0.05%	3.80%	-1.57%	4.36%	1.94%	1.64%	5.49%	5.76%	10.70%	6.62%	5.29%	17.18%	-6.12%	16.11%	8.20%	0.72%	0.63%	
	Mars	0.29%	7.35%	4.52%	4.91%	4.71%	8.21%	7.09%	12.84%	7.12%	11.09%	10.96%	12.93%	20.25%	15.27%	24.64%	26.19%	16.51%	19.32%	47.68%	-1.19%	21.01%	8.34%	8.11%	April	16.84%	14.25%	13.11%	10.82%	10.44%	7.72%	8.56%	16.57%	11.87%	17.19%	14.87%	16.86%	19.73%	12.71%	17.30%	19.33%	15.18%	15.94%	-2.51%	7.61%	8.51%	10.51%	10.80%	
	Mai	6.36%	10.75%	6.93%	7.72%	7.42%	8.20%	7.94%	8.54%	3.55%	-5.97%	4.56%	-5.04%	-1.16%	4.84%	5.29%	2.66%	1.44%	1.95%	-2.30%	0.64%	2.73%	6.42%	5.70%	Júní	7.46%	6.52%	7.77%	7.47%	9.41%	9.70%	10.44%	8.91%	10.44%	8.85%	7.65%	-1.82%	-3.10%	-0.92%	-1.64%	-5.76%	-1.92%	-20.17%	-0.68%	-8.80%	6.84%	5.84%		
	Oktober	-4.12%	7.05%	6.66%	6.56%	8.34%	11.34%	10.31%	9.72%	8.02%	-4.27%	6.95%	-4.27%	-3.24%	0.60%	-2.98%	-5.36%	-1.92%	-1.46%	-12.84%	-2.12%	-5.16%	6.97%	5.66%	Novembar	-1.86%	1.24%	-1.53%	-0.99%	0.65%	9.56%	6.65%	4.56%	3.13%	0.24%	3.51%	1.78%	1.35%	3.82%	-9.86%	-3.42%	1.67%	6.55%	-15.60%	-2.20%	8.71%	-4.16%	2.58%	
	Desember	-9.24%	-1.60%	1.55%	0.61%	5.94%	7.90%	7.38%	1.03%	-4.61%	-3.20%	-1.39%	-2.33%	-3.00%	5.31%	-2.25%	-3.97%	1.97%	-3.85%	1.48%	-5.94%	-2.46%	4.40%	2.32%	Samlaes	4.01%	5.79%	5.33%	5.37%	5.87%	8.37%	7.91%	9.08%	6.01%	-1.88%	7.00%	3.53%	5.42%	3.27%	1.25%	3.96%	1.18%	-2.24%	1.45%	-1.68%	8.74%	6.88%		
	Janúar	-11.11%	-0.82%	-8.17%	-6.82%	8.12%	6.77%	7.13%	3.15%	-1.31%	-2.16%	0.81%	-1.01%	-0.76%	10.32%	-14.53%	4.72%	-14.83%	-9.05%	-14.24%	-12.46%	-3.78%	0.54%	-4.44%	Febrúar	3.68%	-2.76%	-12.42%	-10.18%	-1.36%	3.32%	2.03%	-2.26%	-5.32%	-11.00%	-6.42%	-9.93%	-9.81%	-2.22%	-12.88%	-16.43%	-5.83%	-1.54%	-27.74%	-16.84%	-16.38%	-1.59%	-4.44%	
	Samlaes	23.08%	9.82%	13.54%	13.12%	18.85%	5.34%	9.12%	10.08%	15.76%	23.19%	13.47%	24.30%	20.65%	1.36%	33.14%	4.83%	10.55%	6.85%	-29.71%	-4.03%	-13.44%	10.35%	11.37%	Mars	-25.14%	-7.73%	-7.60%	-8.29%	-0.74%	7.15%	4.68%	-7.70%	-13.19%	-24.13%	-11.74%	-25.59%	-21.58%	-8.44%	-19.19%	-26.89%	-15.53%	-24.29%	-46.18%	-30.12%	-34.06%	-2.72%	-6.01%	
Apríl	-16.38%	-1.84%	-0.24%	-1.32%	2.68%	2.42%	2.50%	-2.55%	-5.84%	-0.88%	-3.57%	0.00%	-0.88%	3.40%	17.72%	-2.82%	2.80%	-4.17%	-14.16%	-9.09%	-9.09%	0.70%	-0.04%	Oktober	-7.36%	1.48%	1.59%	1.09%	-0.57%	-2.27%	-1.70%	-4.19%	-6.64%	-9.35%	-5.78%	-7.48%	-8.25%	-7.32%	-9.36%	-11.23%	-7.92%	-11.46%	-18.59%	-12.96%	-14.08%	-2.90%	-2.80%		
Novembar	-0.45%	-1.14%	-5.41%	-4.41%	-14.58%	-3.67%	-6.78%	-6.60%	-7.92%	-10.03%	-7.42%	-7.71%	-8.41%	-7.00%	-10.64%	-15.49%	-7.84%	-13.57%	-0.64%	-13.56%	-8.67%	-6.66%	-6.22%	Desember	-0.60%	4.88%	-4.01%	-2.20%	-9.54%	-2.05%	-2.04%	-0.47%	-3.17%	-1.62%	-1.75%	-3.78%	-3.93%	-2.30%	-3.31%	-3.45%	-8.00%	-27.01%	-11.58%	-13.73%	-2.50%	-2.48%			
Samlaes	-5.00%	0.77%	-3.91%	-2.98%	-1.95%	0.86%	0.00%	-2.88%	-4.84%	-6.53%	-3.98%	-4.84%	-5.33%	-3.30%	-1.25%	-5.18%	-3.77%	-6.65%	-14.21%	-8.82%	-9.81%	-1.68%	-2.51%	Janúar	2.78%	12.07%	9.83%	10.10%	-2.41%	2.18%	0.95%	0.87%	1.79%	1.40%	1.24%	1.53%	3.62%	-6.35%	-1.68%	-4.00%	-3.31%	-1.90%	-29.17%	-8.33%	-14.24%	1.69%	3.27%		
Febrúar	-15.23%	9.23%	8.19%	7.66%	0.29%	-0.67%	-0.41%	0.13%	2.52%	0.16%	8.16%	10.71%	10.19%	-4.76%	6.40%	-2.56%	0.70%	1.67%	-6.29%	-3.61%	1.08%	2.78%	2.78%																										
Mars	-26.47%	-1.33%	-13.31%	-11.35%	-18.59%	2.39%	-4.01%	-12.46%	-15.97%	-24.71%	-15.14%	-22.35%	-18.60%	-10.86%	-31.59%	-19.08%	-16.30%	-14.84%	-4.12%	-27.35%	-15.99%	-8.15%	-10.03%	April	42.47%	16.52%	4.49%	8.08%	-4.70%	-2.05%	4.31%	13.02%	29.59%	10.12%	32.52%	28.57%	6.17%	24.46%	30.97%	16.33%	32.70%	7.50%	48.28%	29.62%	3.12%	5.91%			
Mai	14.36%	7.79%	-0.18%	2.02%	-7.90%	-2.80%	-4.39%	-0.75%	5.58%	3.59%	1.99%	6.39%	7.73%	0.30%	-2.24%	16.18%	3.07%	21.30%	-3.00%	11.67%	10.49%	-1.48%	-0.94%	Júní	23.34%	8.51%	-0.06%	2.98%	-5.40%	1.03%	-1.15%	3.97%	8.42%	10.85%	6.49%	13.95%	14.20%	7.41%	25.73%	28.22%	12.74%	26.69%	17.04%	30.09%	24.78%	2.76%	4.11%		
Oktober	22.74%	11.27%	9.25%	10.71%	-2.09%	3.78%	1.75%	5.17%	7.34%	7.63%	3.66%	10.42%	9.58%	7.69%	12.63%	11.54%	9.45%	11.74%	3.04%	18.14%	12.62%	5.93%	7.28%	Novembar	-0.46%	2.98%	-2.45%	-1.28%	-4.65%	1.53%	-0.09%	-0.16%	-0.35%	-0.87%	7.31%	6.12%	-1.11%	14.29%	18.33%	2.91%	18.18%	13.73%	10.03%	-0.04%	-0.04%				
Desember	8.43%	1.78%	3.98%	3.65%	-1.77%	3.17%	1.96%	3.06%	3.05%	-1.03%	0.23%	-1.62%	3.04%	-7.88%	1.42%	-4.92%	-4.60%	-8.06%	13.00%	8.33%	3.28%	1.83%	1.83%	Samlaes	11.94%	7.40%	1.55%	3.29%	-5.68%	1.38%	-0.72%	0.14%	2.56%	3.93%	1.46%	7.66%	7.36%	0.69%	10.17%	13.45%	4.60%	13.96%	5.44%	14.90%	11.59%	0.92%	1.99%		
Janúar	0.68%	-4.59%	1.25%	0.03%	-11.00%	-1.66%	-0.09%	-1.36%	0.08%	-5.81%	-1.29%	7.54%	5.88%	0.24%	3.98%	9.38%	2.82%	4.86%	2.36%	-3.90%	1.51%	-2.52%	-1.19%	Febrúar	6.59%	-4.12%	-4.58%	-4.21%	-16.00%	-0.45%	-4.85%	-5.78%	0.11%	-6.39%	3.93%	3.76%	-3.96%	-9.28%	-1.75%	-1.49%	-6.56%	15.24%	10.00%	5.21%	-4.25%	-3.52%			
Mars	10.50%	45.77%	10.53%	17.97%	-1.60%	-0.30%	-6.53%	5.43%	6.25%	6.40%	5.82%	18.08%	11.95%	7.67%	6.12%	17.89%	10.51%	17.42%	-3.23%	29.41%	14.52%	3.98%	6.52%	April	-36.04%	33.08%	-0.99%	4.84%	-10.91%	-6.12%	-7.71%	-7.72%	-7.51%	-19.87%	-3.00%	-8.88%	-8.23%	-11.28%	-11.56%	-6.40%	-10.09%	-5.69%	-8.98%	-25.58%	-12.70%	-6.19%	-5.20%		
Mai	-4.79%	14.27%	5.06%	6.65%	-2.75%	-0.79%	-1.38%	0.35%	-1.15%	-1.10%	1.64%	0.74%	-3.18%	-3.22%	-1.14%	-1.57%	-5.02%	1.55%	-9.45%	-4.45%	-5.10%	0.98%	Júní	-13.66%	-13.04%	-6.94%	-10.17%	-6.50%	-4.89%																				

Fjöldi bíla

Heildar meðalumferðar, á dag í hverjum mánuði, í mælipunktum.



Skýringar

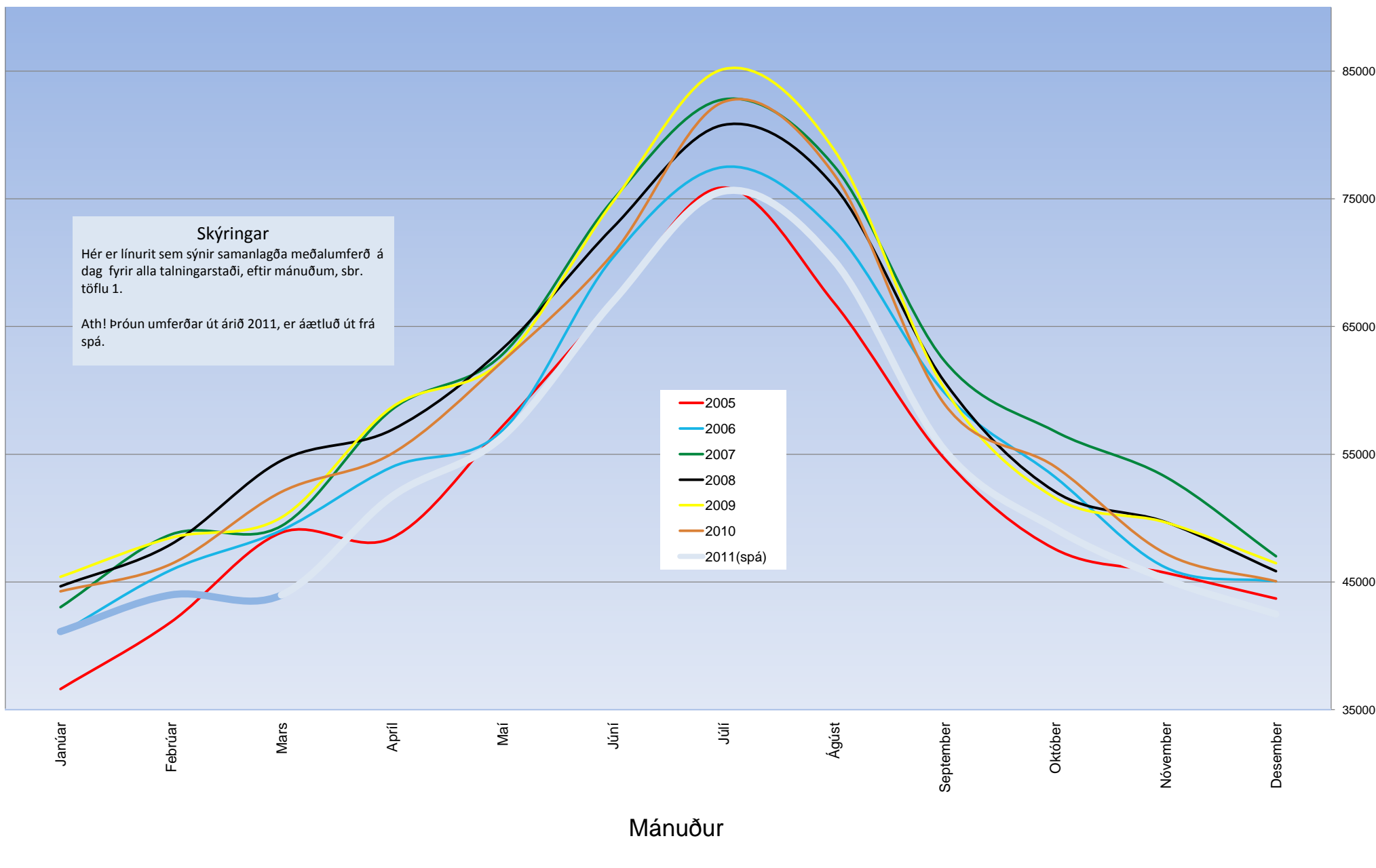
Línuritið sýnir þróun samanlagðrar meðalumferðar á dag yfir árið.

$\Sigma(\text{meðalumferð í jan} + \text{meðalumferð í feb.} + \dots)$

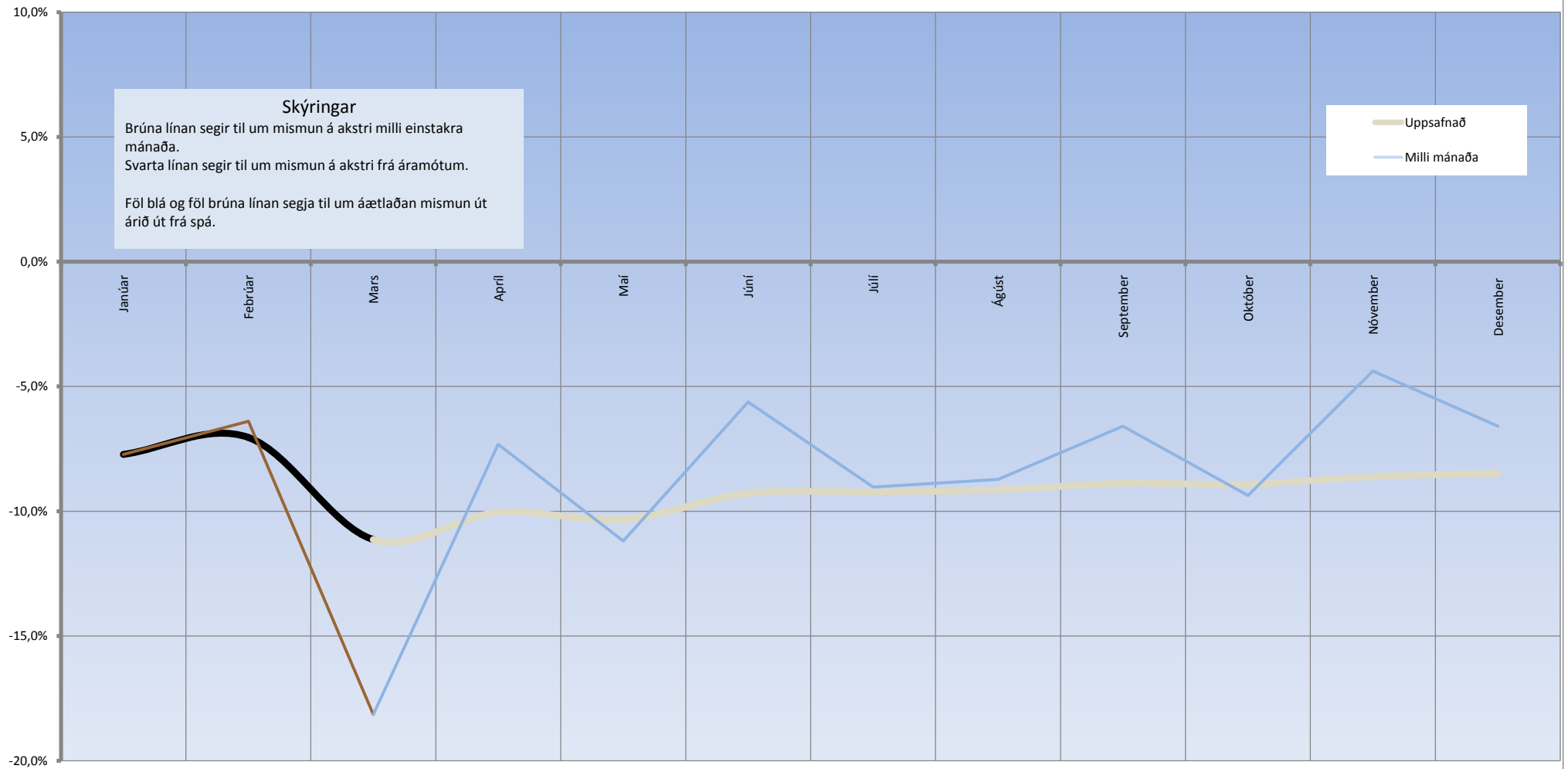
Ath! árið 2011 er áætlað út frá spá.

Samanlögð meðalumferð, í mælipunktum, á dag.

Fjöldi bíla



Mismunur á akstri milli árunna 2010 og 2011



Hlutfallsleg þróun aksturs innan hvers svæðis 2010

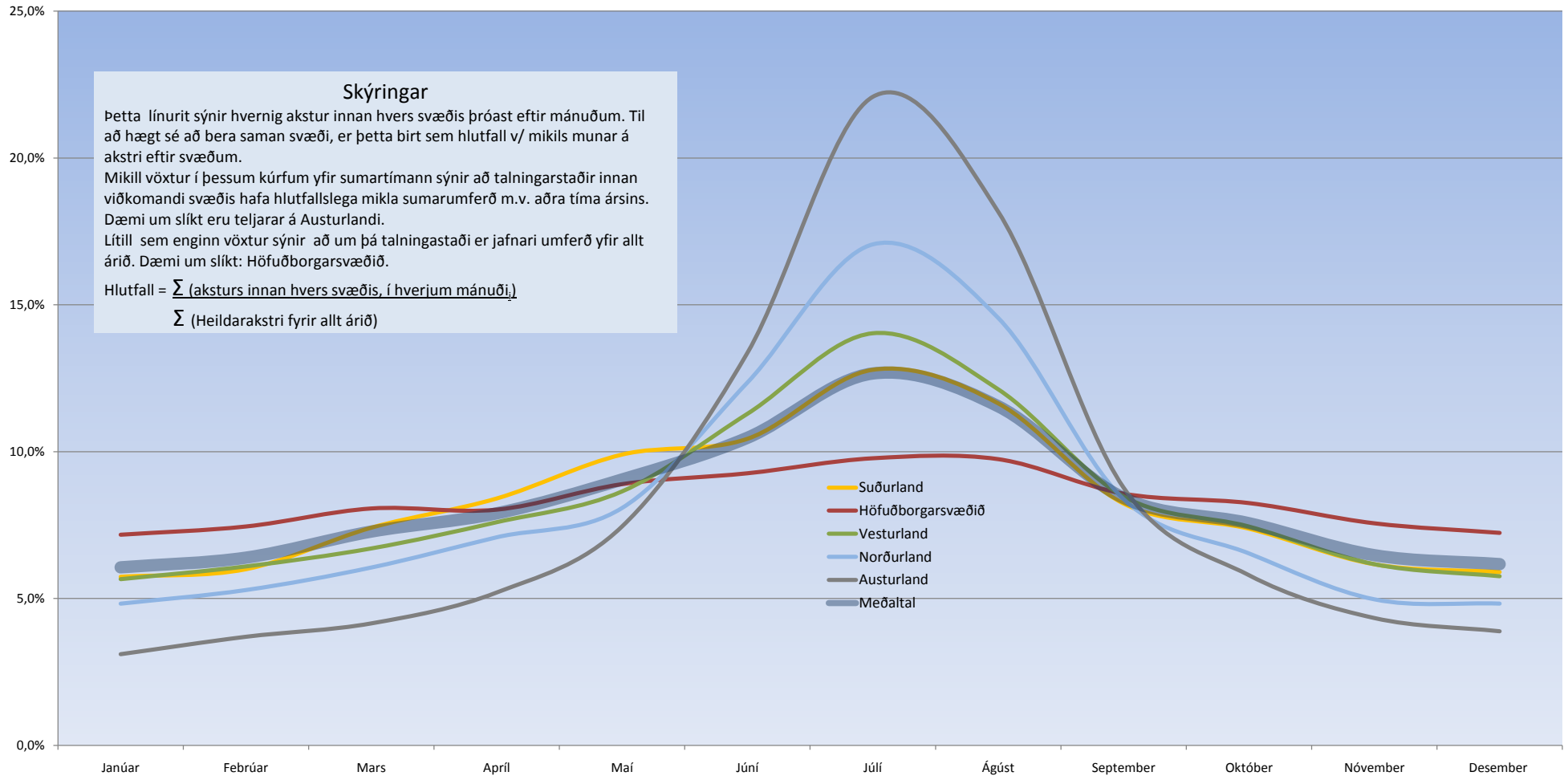
Skýringar

Þetta línurit sýnir hvernig akstur innan hvers svæðis þróast eftir mánuðum. Til að hægt sé að bera saman svæði, er þetta birt sem hlutfall v/ mikils munar á akstri eftir svæðum.

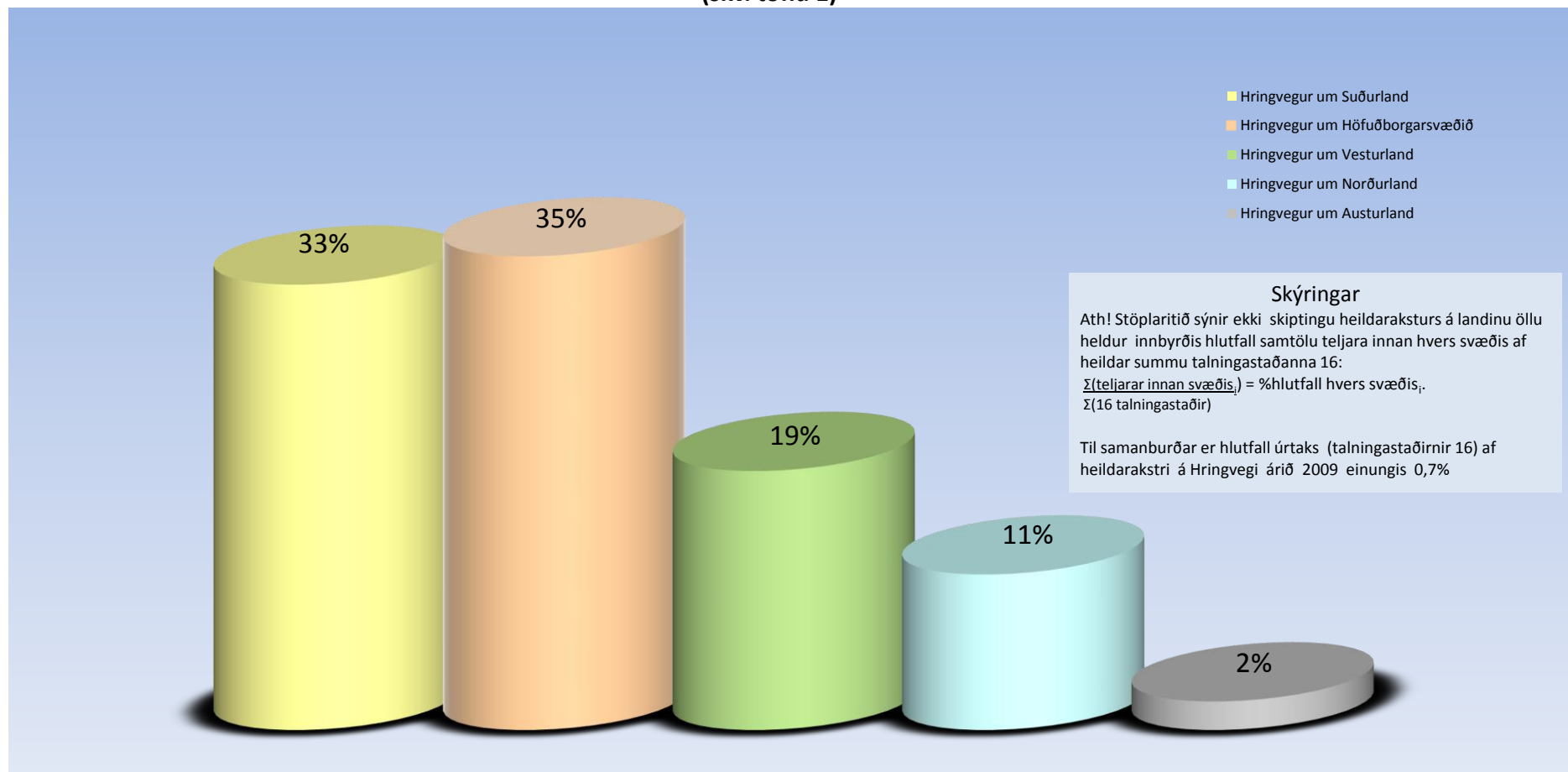
Mikill vöxtur í þessum kúrfum yfir sumartímann sýnir að talningarstaðir innan viðkomandi svæðis hafa hlutfallslega mikla sumarumferð m.v. aðra tíma ársins. Dæmi um slíkt eru teljarar á Austurlandi.

Lítill sem enginn vöxtur sýnir að um þá talningastaði er jafnari umferð yfir allt árið. Dæmi um slíkt: Höfuðborgarsvæðið.

$$\text{Hlutfall} = \frac{\sum (\text{aksturs innan hvers svæðis, í hverjum mánuði}_i)}{\sum (\text{Heildarakstri fyrir allt árið})}$$



Innbyrðis vægi talningastaðanna 16 um svæðin árið 2010
(skv. töflu 1)



- Hringvegur um Suðurland
- Hringvegur um Höfuðborgarsvæðið
- Hringvegur um Vesturland
- Hringvegur um Norðurland
- Hringvegur um Austurland

Skýringar

Ath! Stöplariði sýnir ekki skiptingu heildaraksturs á landinu öllu heldur innbyrðis hlutfall samtölu teljara innan hvers svæðis af heildar summu talningastaðanna 16:

$$\frac{\sum(\text{teljarar innan svæðis}_i)}{\sum(16 \text{ talningastaðir})} = \% \text{hlutfall hvers svæðis}_i$$

Til samanburðar er hlutfall úrtaks (talningastaðirnir 16) af heildarakstri á Hringvegi árið 2009 einungis 0,7%