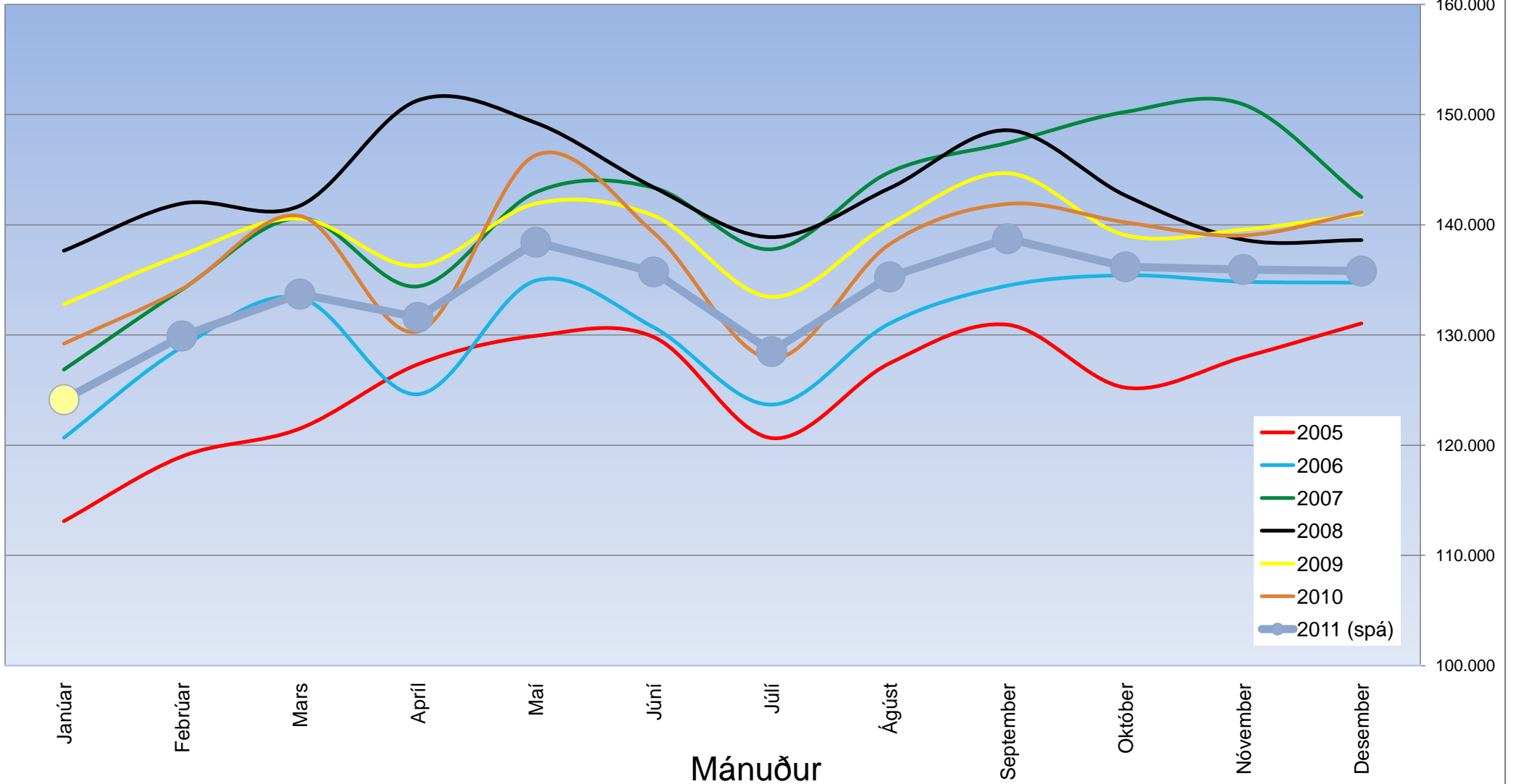


Tafla 1. sýnir umferð og meðalakstur á dag eftir mánuðum í þremur völdum sniðum innan Höfuðborgarsvæðis.

		Höfuðborgarsvæðið										
		Hafnarfjarðarvegur sunnan Kópavogslækjar	Reykjanesbraut við Dalveg í Kópavogi	Nesbraut móts við Skeiðung, (ótan Antunnsbrekku)	Samanlagður meðalakstur (umferð, x lengd vegkafila)	Meðalkm/dag fyrir hvern mánuð lagður saman (reikntala)						
Lengd vegkafila í km →		1,01	1,60	0,60	3,21							
Ár	mán.	Vegnr. →	40-03	41-12	49-01	Σ Km/dag	Σ Km	Samantekt				
Umferð →		Fjöldi bíla pr. dag					Heildarakstur á höfuðborgarsvæðinu árið 2009 = 669.606 þús. km					
							Heildarakstur úrtaks árið 2009 = 50.717 þús. km					
							Hlutfall úrtaks af heildar akstri er því = 7,6%					
---- Mismunur ----												
		Umferð Vegkafilar			Meðalakstur Samtals							
		40-03	41-12	49-01	Mánaða	Af er árs						
2005	Janúar	36.964	35.212	32.382	113.102	113.102						
	Febrúar	39.806	36.014	35.244	118.973	232.075						
	Mars	39.314	37.567	36.152	121.506	353.581						
	Apríl	39.487	40.551	37.617	127.334	480.915						
	Mai	40.229	40.965	39.578	129.922	610.837						
	Júní	39.072	41.329	40.381	129.818	740.655						
	Júlí	34.593	38.833	39.291	120.646	861.301						
	Ágúst	38.566	40.513	39.431	127.431	988.732						
	September	41.254	41.184	38.954	130.933	1.119.665						
	Óktóber	39.454	39.405	37.215	125.226	1.244.891						
	Nóvember	39.646	41.051	37.101	127.985	1.372.875						
	Desember	40.180	42.745	36.800	131.054	1.503.929						
	Meðalumerð/dag = ÁDU		39.047	39.614	37.512	Heildarakstur = 45.744.508						
2006	Janúar	37.989	38.437	34.682	120.677	120.677	2,77%	7,10%	6,70%	6,70%	6,70%	
	Febrúar	40.907	40.671	37.501	128.890	249.568	2,77%	6,40%	8,34%	8,34%	7,54%	
	Mars	42.550	41.844	39.087	133.378	382.946	8,23%	8,12%	9,77%	9,77%	8,31%	
	Apríl	38.387	39.569	37.569	124.623	507.568	-2,79%	-0,13%	-2,13%	-2,13%	5,54%	
	Mai	42.024	42.513	40.787	134.937	642.506	4,46%	3,05%	3,86%	3,86%	5,18%	
	Júní	39.411	41.522	40.783	130.698	773.204	0,87%	0,95%	0,68%	0,68%	4,39%	
	Júlí	35.789	39.723	39.963	123.681	896.885	3,46%	1,71%	2,52%	2,52%	4,13%	
	Ágúst	38.871	42.184	40.485	131.044	1.027.930	0,79%	2,67%	2,84%	2,84%	3,96%	
	September	42.755	41.641	41.129	134.486	1.162.415	3,64%	5,58%	2,71%	2,71%	3,82%	
	Óktóber	43.059	42.356	40.267	135.419	1.297.834	9,14%	8,20%	8,14%	8,14%	4,25%	
	Nóvember	43.214	41.768	40.612	134.842	1.432.676	9,00%	9,46%	5,36%	5,36%	4,36%	
	Desember	42.532	42.771	38.934	134.751	1.567.428	5,85%	5,80%	2,82%	2,82%	4,22%	
	Meðalumerð/dag = ÁDU		40.624	41.250	39.315	Heildarakstur = 47.675.924		4,04%	4,13%	4,81%	4,22%	4,22%
2007	Janúar	40.666	39.409	37.899	126.866	126.866	7,05%	9,28%	5,13%	5,13%	5,13%	
	Febrúar	42.636	41.580	40.896	134.128	260.994	4,23%	9,05%	4,06%	4,06%	4,58%	
	Mars	44.711	43.720	42.527	140.626	401.621	5,08%	8,80%	5,43%	5,43%	4,88%	
	Apríl	41.126	42.156	42.383	134.417	536.037	7,14%	12,81%	7,86%	7,86%	5,61%	
	Mai	43.780	44.517	45.850	142.955	678.992	4,18%	12,41%	5,94%	5,94%	5,68%	
	Júní	42.691	44.919	47.313	143.376	822.369	8,32%	16,07%	9,70%	9,70%	6,36%	
	Júlí	39.540	43.771	46.367	137.990	960.158	10,48%	16,02%	11,41%	11,41%	7,05%	
	Ágúst	43.072	45.828	46.593	144.783	1.104.942	10,81%	15,09%	10,48%	10,48%	7,49%	
	September	44.536	46.730	46.157	147.444	1.252.385	4,17%	12,22%	9,64%	9,64%	7,74%	
	Óktóber	45.561	47.695	46.533	150.248	1.402.634	5,81%	15,56%	10,95%	10,95%	8,07%	
	Nóvember	45.586	48.466	45.560	150.923	1.553.557	5,49%	12,18%	11,93%	11,93%	8,44%	
	Desember	41.950	46.794	42.143	142.526	1.696.083	-1,37%	8,24%	5,77%	5,77%	8,21%	
	Meðalumerð/dag = ÁDU		42.988	44.632	44.185	Heildarakstur = 51.589.181		5,82%	8,20%	12,39%	8,21%	8,21%
2008	Janúar	42.079	43.928	41.438	137.647	137.647	3,47%	9,34%	8,50%	8,50%	8,50%	
	Febrúar	42.211	45.714	43.597	141.934	279.581	-1,00%	6,60%	5,82%	5,82%	7,12%	
	Mars	43.161	44.927	43.751	141.726	421.308	-3,47%	2,88%	0,78%	0,78%	4,90%	
	Apríl	45.303	48.229	47.282	151.292	572.599	10,16%	11,58%	12,55%	12,55%	6,82%	
	Mai	43.400	48.140	47.334	149.258	721.858	-0,87%	3,24%	4,41%	4,41%	6,31%	
	Júní	40.402	46.482	47.040	143.401	865.259	-5,36%	-0,58%	0,02%	0,02%	5,22%	
	Júlí	37.788	45.431	46.706	138.879	1.004.138	-4,43%	0,73%	0,79%	0,79%	4,58%	
	Ágúst	39.855	46.910	46.690	143.323	1.147.461	-7,47%	0,21%	-1,01%	-1,01%	3,85%	
	September	44.393	46.983	47.628	148.587	1.296.047	-0,32%	3,19%	0,78%	0,78%	3,49%	
	Óktóber	43.645	44.328	46.087	142.658	1.438.706	-4,21%	-0,96%	-5,05%	-5,05%	2,57%	
	Nóvember	42.610	43.068	44.500	138.645	1.577.351	-6,53%	-2,33%	-8,14%	-8,14%	1,53%	
	Desember	41.091	44.677	42.705	138.608	1.715.959	-2,05%	1,33%	-2,75%	-2,75%	1,17%	
	Meðalumerð/dag = ÁDU		42.162	45.735	45.396	Heildarakstur = 52.336.744		-1,92%	2,47%	2,74%	1,17%	1,45%
2009	Janúar	40.051	41.955	42.020	132.792	132.792	-4,82%	1,40%	-3,53%	-3,53%	-3,53%	
	Febrúar	41.668	43.176	43.833	137.264	270.056	-1,76%	0,54%	-3,29%	-3,29%	-3,41%	
	Mars	42.649	43.974	45.207	140.558	410.614	-1,19%	3,33%	-0,82%	-0,82%	-2,54%	
	Apríl	40.139	43.031	44.800	136.270	546.884	-11,40%	-5,25%	-9,93%	-9,93%	-4,49%	
	Mai	41.143	45.166	46.849	141.929	688.813	-5,20%	-1,02%	-4,91%	-4,91%	-4,58%	
	Júní	39.338	45.356	47.542	140.826	829.639	-2,63%	1,07%	-1,80%	-1,80%	-4,12%	
	Júlí	36.278	43.055	46.544	133.455	963.094	-4,00%	-0,35%	-3,91%	-3,91%	-4,09%	
	Ágúst	38.943	45.449	46.669	140.053	1.103.147	-2,29%	-0,04%	-2,28%	-2,28%	-3,86%	
	September	42.344	46.308	46.364	144.678	1.247.826	-4,62%	-2,65%	-2,63%	-2,63%	-3,72%	
	Óktóber	41.415	44.084	44.499	139.063	1.386.889	-5,11%	-3,45%	-2,52%	-2,52%	-3,60%	
	Nóvember	41.585	44.265	44.559	139.560	1.526.449	-2,41%	0,13%	0,66%	0,66%	-3,23%	
	Desember	40.810	45.965	43.664	140.961	1.667.410	-0,68%	2,25%	1,70%	1,70%	-2,83%	
	Meðalumerð/dag = ÁDU		40.514	44.315	45.213	Heildarakstur = 50.717.044		-3,91%	-3,10%	-0,41%	-2,83%	-3,09%
2010 (ósamb.)	Janúar	38.769	40.948	40.896	129.211	129.211	-3,20%	-2,67%	-2,70%	-2,70%	-2,70%	
	Febrúar	40.353	42.290	42.919	134.172	263.383	-2,69%	-2,09%	-2,25%	-2,25%	-2,47%	
	Mars	42.317	44.527	44.702	140.805	404.188	-0,78%	-1,12%	0,18%	0,18%	-1,56%	
	Apríl	38.546	41.213	42.389	130.306	534.943	-3,97%	-5,38%	-4,38%	-4,38%	-2,27%	
	Mai	42.047	46.617	48.759	146.310	680.803	2,20%	4,08%	3,09%	3,09%	-1,16%	
	Júní	38.698	44.896	47.264	139.277	820.080	-1,63%	-0,58%	-1,10%	-1,10%	-1,15%	
	Júlí	35.047	40.894	45.038	127.851	947.931	-3,39%	-3,24%	-4,20%	-4,20%	-1,57%	
	Ágúst	39.203	44.069	46.872	138.229	1.086.160	0,67%	0,43%	-1,30%	-1,30%	-1,54%	
	September	41.946	44.929	46.070	141.894	1.228.053	-0,94%	-0,63%	-1,92%	-1,92%	-1,58%	
	Óktóber	41.381	44.334	45.824	140.224	1.368.277	-0,08%	2,98%	0,83%	0,83%	-1,34%	
	Nóvember	40.967	44.338	44.525	139.032	1.507.310	-1,49%	-0,08%	-0,38%	-0,38%	-1,25%	
	Desember	40.499	46.137	44.030	141.141	1.648.451	-0,76%	0,84%	0,13%	0,13%	-1,14%	
	Meðalumerð/dag = ÁDU		39.981	43.766	44.941	Heildarakstur = 50.140.376		-1,31%	-1,24%	-0,60%	-1,14%	-1,14%
2011 (órýnt)	Janúar	34.438	40.623	40.584	124.130	124.130	-11,17%	-0,79%	-0,79%	-0,79%	-3,93%	
	Febrúar (spá)	36.033	42.237	43.226	129.908	254.308	-10,71%	-0,12%	0,71%	-3,18%	-3,55%	
	Mars (spá)	37.086	43.460	44.551	133.724	387.761	-12,36%	-2,40%	-0,34%	-0,34%	-4,06%	
	Apríl (spá)	35.390	43.172	44.661	131.606	519.367	-8,21%	4,75%	5,36%	1,00%	-2,83%	
	Mai (spá)	36.791	45.399	47.698	138.416	657.783	-7,12%	-2,61%	-2,18%	-5,40%	-3,38%	
	Júní (spá)	34.894	44.833	47.921	135.728	793.511	-9,83%	-0,14%	1,39%	-2,55%	-3,24%	
	Júlí (spá)	31.882	42.647	46.767	128.509	922.021	-9,03%	4,29%	3,88%	0,51%	-2,73%	
	Ágúst (spá)	34.731	44.895	47.282	135.280	1.057.301	-11,41%	1,88%	0,87%	-2,13%	-2,66%	
	September (spá)	37.461	45.367	47.206	138.747	1.196.048	-10,69%	0,98%	2,47%	-2,22%	-2,61%	
	Óktóber (spá)	37.046	44.430	46.141	136.189	1.332.236	-10,48%	0,22%	0,69%	-2,88%	-2,63%	
	Nóvember (spá)	36.918	44.582	45.544	135.945	1.468.181	-9,88%	0,55%	2,29%	-2,22%	-2,60%	
	Desember (spá)	35.997	45.639	44.041	135.805	1.603.986	-11,12%	-1,08%	0,02%	-3,78%	-2,70%	
	Meðalumerð/dag = ÁDU _{spá}		35.722	43.940	45.470	Heildarakstur = 48.787.918		-10,65%	0,40%			

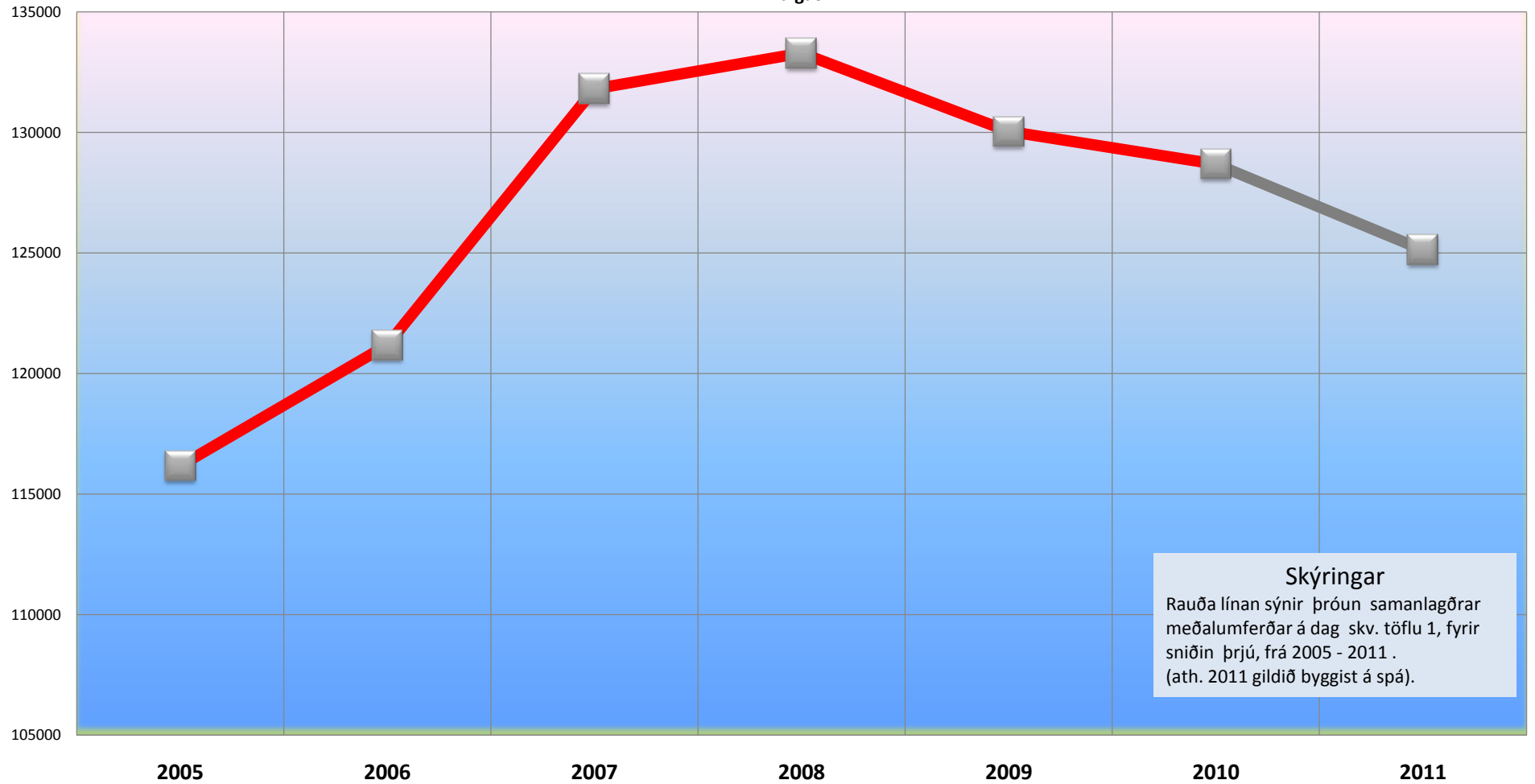
Samanlagður meðalakstur á dag í hverjum mánuði fyrir vegkafla 40-03, 41-12 og 49-01

Akstur



Σ ÁDU_{nálgað}

Σ bílar/dag



Skýringar

Rauða línan sýnir þróun samanlagðrar meðalumferðar á dag skv. töflu 1, fyrir sniðin þrjú, frá 2005 - 2011 .
(ath. 2011 gildið byggist á spá).

Þróun ÁDU spár fyrir sniðin þrjú árið 2010

Σ bílar/dag

