

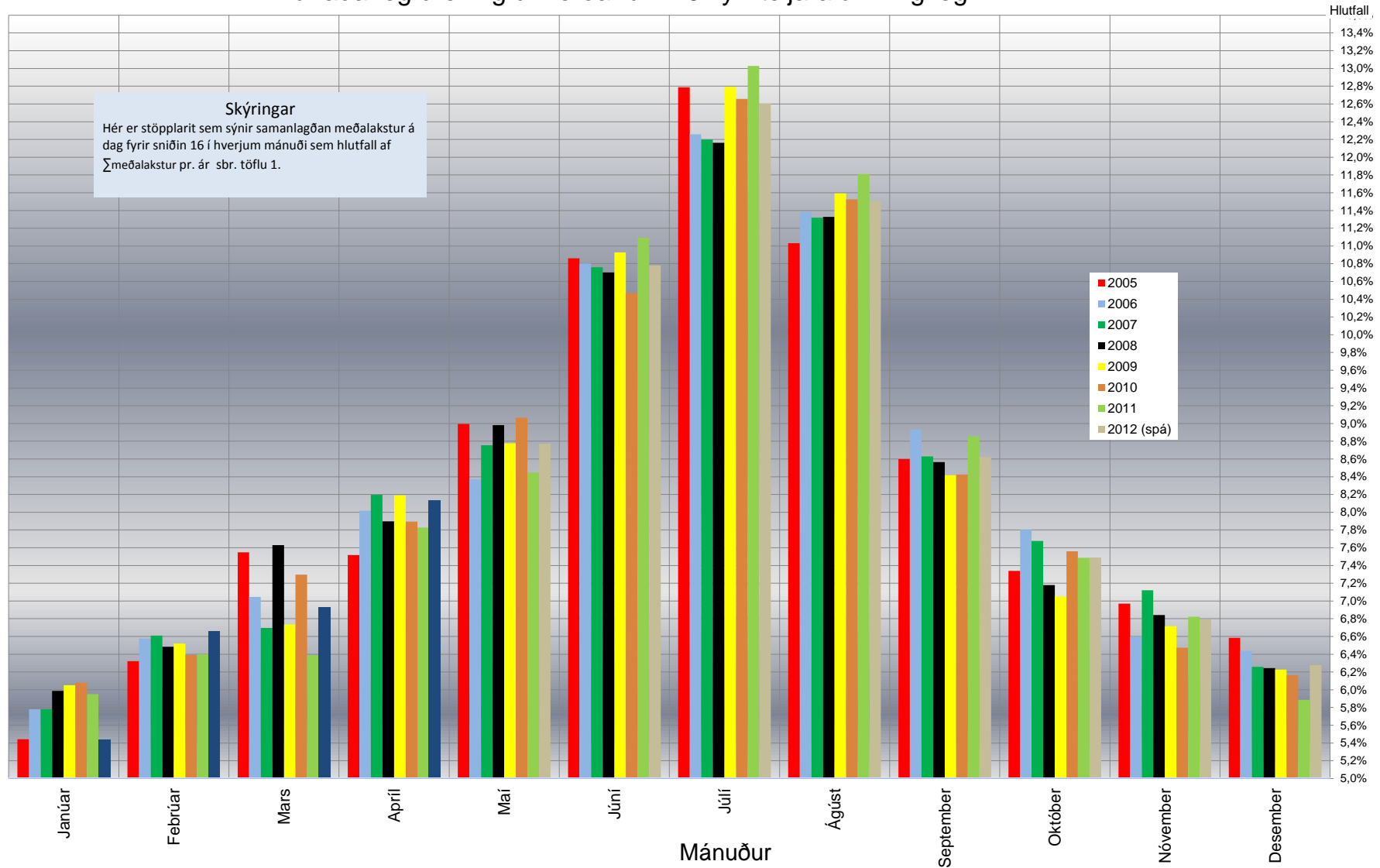
Tafla 1. sýnir samanlagða meðalumerð og akstur allra talingastaða eftir mánuðum.

Mánuður	Lengd vegkalla í km → Ar mán. Vegrn →	Nöfn talingastaða																		Umerð samtals (akstur vegkalla í km) →				
		Suðurland				Höfuðborgarsvæðið				Vesturland				Norðurland				Austurland						
		Hringvegur á Myrkvassandi	Hringvegur vestan Höfuvatnar	Hringvegur á Hallshöðum	Húlafla svæðið í heildarsamt. árið 2011	Hringvegur á Geitlausi	Hringvegur við Úlfarstíð	Húlafla svæðið í heildarsamt. árið 2011	Hringvegur um Hvalljörðing	Hringvegur við Hólmargil	Hringvegur á Hólvörðunahöndum	Húlafla svæðið í heildarsamt. árið 2011	Hringvegur við Glúfura	Hringvegur í Örnadal	Hringvegur í Králingarhlöðum	Hringvegur á Myranasvæði	Húlafla svæðið í heildarsamt. árið 2011	Hringvegur á Múhúlaáreialum	Hringvegur við Ólafssandstöð		Hringvegur við Hválnes í Lóni	Húlafla svæðið í heildarsamt. árið 2011		
2005	8,79	7,62	13,04	28%	3,41	4,78	39%	5,76	8,41	10,83	20%	11,68	9,90	3,43	12,64	5,73	11%	12,03	10,28	13,26	2%	40,85	40,85	
2006	12,11	12,25	12,40	12,55	12,70	12,85	13,00	13,15	13,30	13,45	13,60	13,75	13,90	14,05	14,20	14,35	14,50	14,65	14,80	14,95	15,10	15,25	15,40	15,55
2007	15,22	15,36	15,50	15,64	15,78	15,92	16,06	16,20	16,34	16,48	16,62	16,76	16,90	17,04	17,18	17,32	17,46	17,60	17,74	17,88	18,02	18,16	18,30	18,44
2008	18,33	18,47	18,61	18,75	18,89	19,03	19,17	19,31	19,45	19,59	19,73	19,87	20,01	20,15	20,29	20,43	20,57	20,71	20,85	20,99	21,13	21,27	21,41	21,55
2009	21,44	21,58	21,72	21,86	22,00	22,14	22,28	22,42	22,56	22,70	22,84	22,98	23,12	23,26	23,40	23,54	23,68	23,82	23,96	24,10	24,24	24,38	24,52	24,66
2010	24,57	24,71	24,85	24,99	25,13	25,27	25,41	25,55	25,69	25,83	25,97	26,11	26,25	26,39	26,53	26,67	26,81	26,95	27,09	27,23	27,37	27,51	27,65	27,79
2011	27,92	28,06	28,20	28,34	28,48	28,62	28,76	28,90	29,04	29,18	29,32	29,46	29,60	29,74	29,88	30,02	30,16	30,30	30,44	30,58	30,72	30,86	31,00	31,14
2012 (eini löyndar tölur)	31,28	31,42	31,56	31,70	31,84	31,98	32,12	32,26	32,40	32,54	32,68	32,82	32,96	33,10	33,24	33,38	33,52	33,66	33,80	33,94	34,08	34,22	34,36	34,50
ADU (lagan)	392	2063	5904	8052	22504	5063	3396	1089	1096	888	2795	448	307	260	211	213	714	656174	4169117					4016874

Tafla 2. sýnir hlutfallslegan mismun á milli ára í sömu mánuðum eftir talingastöðum

		Nöfn talingastaða																				Límer	Akstur samta																			
		Suðurland				Hlíðurborgarsvæði				Vesturland				Norurland				Austurland																								
Ár	mån. Vegnr. --	1-10	1-2	1-8	1-12	1-2	1-3	1-4	1-6	1-8	1-4	1-1	1-2	1-3	1-4	1-6	1-8	1-4	1-2	1-4	1-2	1-4	1-2	1-4	1-2	1-4	1-2	1-4	1-2	1-4	1-2	1-4	1-2	1-4	1-2	1-4						
Mismunur milli ára 2005 og 2006	Janúar	31.0%	8.3%	20.8%	18.3%	19.3%	2.8%	6.8%	22.7%	22.2%	20.3%	22.2%	11.3%	10.8%	23.2%	8.4%	25.3%	18.5%	27.5%	3.8%	-5.5%	8.0%	-1.1%	12.9%	1.0%	14.4%	9.6%	10.5%	0.3%	-0.8%	1.5%	1.2%	1.0%	1.4%	1.1%	1.3%	1.2%	1.3%				
	Febrúar	27.5%	5.4%	17.6%	15.2%	16.8%	3.2%	6.6%	20.3%	20.4%	1.2%	18.1%	4.4%	-2.9%	9.4%	5.0%	8.4%	6.3%	15.1%	14.9%	2.0%	11.4%	9.6%	10.5%	0.3%	-0.8%	1.5%	1.2%	1.0%	1.4%	1.1%	1.3%	1.2%	1.3%	1.2%	1.3%	1.2%	1.3%				
	Mars	-14.4%	-7.9%	7.4%	3.3%	4.0%	3.2%	3.4%	4.4%	-4.2%	-23.2%	-2.4%	-23.8%	-22.7%	-9.5%	-5.0%	-19.0%	-16.0%	-15.0%	-19.7%	-22.2%	-18.8%	0.3%	-0.8%	1.5%	1.2%	1.0%	1.4%	1.1%	1.3%	1.2%	1.3%	1.2%	1.3%	1.2%	1.3%	1.2%	1.3%				
	Apríl	63.5%	11.1%	20.2%	18.5%	19.1%	3.1%	7.7%	18.5%	25.1%	19.4%	20.8%	17.8%	0.0%	2.3%	0.0%	-1.2%	5.2%	3.5%	-11.7%	28.2%	-4.9%	11.4%	13.3%	10.6%	1.0%	1.4%	9.6%	10.5%	0.3%	-0.8%	1.5%	1.2%	1.0%	1.4%	1.1%	1.3%	1.2%	1.3%			
	Mai	7.4%	-4.5%	0.8%	0.0%	-9.5%	3.3%	1.4%	0.7%	-2.2%	-13.2%	-2.1%	-14.2%	-16.2%	-11.5%	-4.7%	-5.5%	-12.1%	-1.9%	-5.8%	-2.2%	3.5%	-0.8%	-1.1%	-0.8%	-1.1%	-0.8%	-1.1%	-0.8%	-1.1%	-0.8%	-1.1%	-0.8%	-1.1%	-0.8%	-1.1%	-0.8%	-1.1%	-0.8%			
	Júní	12.3%	1.4%	4.7%	4.4%	4.0%	3.4%	3.6%	8.0%	8.8%	13.7%	9.1%	11.8%	7.6%	3.5%	6.3%	3.7%	6.2%	12.6%	3.4%	-0.6%	5.3%	5.1%	5.7%	5.1%	5.7%	5.1%	5.7%	5.1%	5.7%	5.1%	5.7%	5.1%	5.7%	5.1%	5.7%	5.1%	5.7%	5.1%	5.7%		
	Júlí	-9.4%	-5.9%	0.2%	-2.0%	-0.1%	3.4%	2.1%	4.0%	5.0%	4.1%	4.4%	2.7%	5.0%	2.0%	2.9%	7.6%	3.2%	5.8%	-1.0%	-2.8%	0.7%	2.0%	1.8%	2.0%	1.8%	2.0%	1.8%	2.0%	1.8%	2.0%	1.8%	2.0%	1.8%	2.0%	1.8%	2.0%	1.8%	2.0%			
	Ágúst	18.5%	11.4%	10.6%	11.3%	9.0%	2.4%	4.6%	6.8%	9.2%	13.9%	8.7%	15.6%	19.9%	14.8%	22.4%	3.7%	15.7%	19.6%	11.8%	28.3%	19.7%	8.2%	9.6%	9.6%	8.2%	9.6%	8.2%	9.6%	8.2%	9.6%	8.2%	9.6%	8.2%	9.6%	8.2%	9.6%	8.2%	9.6%	8.2%	9.6%	
	September	8.0%	5.3%	13.8%	11.5%	12.3%	4.6%	7.0%	11.0%	15.8%	7.3%	12.3%	9.6%	13.6%	12.3%	37.8%	3.7%	13.1%	25.6%	11.9%	18.2%	18.1%	9.3%	10.6%	9.3%	10.6%	9.3%	10.6%	9.3%	10.6%	9.3%	10.6%	9.3%	10.6%	9.3%	10.6%	9.3%	10.6%	9.3%	10.6%	9.3%	10.6%
	Oktober	17.9%	11.9%	15.7%	15.0%	7.1%	9.6%	8.8%	13.9%	17.5%	13.9%	15.1%	18.4%	16.4%	16.2%	28.6%	23.1%	17.6%	21.3%	3.4%	19.1%	13.0%	11.6%	13.0%	11.6%	13.0%	11.6%	13.0%	11.6%	13.0%	11.6%	13.0%	11.6%	13.0%	11.6%	13.0%	11.6%	13.0%	11.6%	13.0%		
	November	2.8%	-2.1%	4.4%	3.0%	10.0%	-0.5%	2.3%	-1.5%	-2.1%	-8.4%	-2.5%	-7.8%	-6.3%	-2.2%	0.5%	-8.3%	-4.0%	-5.1%	-1.7%	-1.7%	-2.8%	1.0%	0.6%	1.0%	0.6%	1.0%	0.6%	1.0%	0.6%	1.0%	0.6%	1.0%	0.6%	1.0%	0.6%	1.0%	0.6%	1.0%	0.6%		
	Desember	5.7%	1.5%	5.5%	4.7%	8.5%	1.3%	3.2%	5.4%	4.9%	3.3%	5.0%	3.7%	4.7%	1.2%	16.2%	5.0%	3.1%	1.2%	0.7%	-1.0%	0.4%	3.6%	3.9%	3.6%	3.9%	3.6%	3.9%	3.6%	3.9%	3.6%	3.9%	3.6%	3.9%	3.6%	3.9%	3.6%	3.9%	3.6%	3.9%		
	Samtals	9.2%	2.4%	9.0%	7.6%	7.9%	3.3%	4.7%	8.9%	9.0%	4.6%	8.2%	4.8%	4.0%	4.6%	8.4%	3.7%	4.8%	9.5%	1.8%	6.3%	5.8%	6.2%	5.8%	6.2%	5.8%	6.2%	5.8%	6.2%	5.8%	6.2%	5.8%	6.2%	5.8%	6.2%	5.8%	6.2%	5.8%	6.2%	5.8%		
Mismunur milli ára 2006 og 2007	Janúar	6.6%	0.8%	10.6%	8.5%	2.7%	5.0%	4.4%	8.3%	8.7%	3.4%	7.8%	3.3%	3.1%	-3.9%	8.9%	7.3%	8.1%	-0.7%	6.0%	-3.6%	14.0%	6.1%	6.1%	6.1%	6.1%	6.1%	6.1%	6.1%	6.1%	6.1%	6.1%	6.1%	6.1%	6.1%	6.1%	6.1%	6.1%	6.1%			
	Febrúar	-2.6%	0.6%	8.0%	6.2%	4.0%	6.4%	5.7%	8.9%	6.3%	12.9%	8.4%	7.8%	12.6%	4.0%	11.0%	8.5%	6.5%	-11.0%	-4.3%	-2.1%	-6.1%	6.2%	6.6%	6.2%	6.6%	6.2%	6.6%	6.2%	6.6%	6.2%	6.6%	6.2%	6.6%	6.2%	6.6%	6.2%	6.6%	6.2%	6.6%		
	Mars	0.3%	-0.2%	-1.4%	-1.0%	-1.9%	0.8%	0.1%	3.8%	-0.4%	4.4%	2.4%	1.8%	5.6%	5.8%	10.7%	6.6%	5.3%	17.2%	-6.1%	16.1%	8.2%	0.8%	0.8%	0.8%	0.8%	0.8%	0.8%	0.8%	0.8%	0.8%	0.8%	0.8%	0.8%	0.8%	0.8%	0.8%	0.8%	0.8%	0.8%		
	Apríl	0.3%	7.4%	4.5%	4.9%	4.7%	8.2%	7.1%	12.9%	9.3%	11.1%	11.4%	12.9%	20.2%	15.3%	24.6%	26.2%	16.5%	19.3%	47.7%	-1.2%	21.0%	8.5%	8.5%	8.5%	8.5%	8.5%	8.5%	8.5%	8.5%	8.5%	8.5%	8.5%	8.5%	8.5%	8.5%	8.5%	8.5%	8.5%	8.5%	8.5%	
	Mai	16.8%	14.3%	9.3%	10.6%	10.4%	7.7%	8.6%	16.6%	13.0%	17.2%	15.3%	16.9%	19.7%	12.7%	17.4%	19.2%	15.2%	15.9%	-2.5%	7.6%	8.5%	10.6%	10.9%	10.6%	10.9%	10.6%	10.9%	10.6%	10.9%	10.6%	10.9%	10.6%	10.9%	10.6%	10.9%	10.6%	10.9%	10.6%	10.9%	10.6%	
	Júní	6.4%	10.8%	6.9%	7.7%	7.4%	8.2%	7.9%	8.5%	3.6%	-6.0%	4.6%	-5.0%	-1.2%	4.8%	5.3%	2.7%	1.4%	1.9%	-2.3%	9.9%	2.7%	5.4%	5.7%	5.4%	5.7%	5.4%	5.7%	5.4%	5.7%	5.4%	5.7%	5.4%	5.7%	5.4%	5.7%	5.4%	5.7%	5.4%	5.7%		
	Júlí	7.5%	6.5%	7.6%	7.5%	9.4%	9.7%	9.6%	10.4%	6.1%	-4.9%	6.5%	-1.8%	-3.1%	-0.9%	-1.6%	-5.8%	-2.0%	-5.3%	-20.2%	-0.7%	-8.6%	6.6%	5.6%	6.6%	5.6%	6.6%	5.6%	6.6%	5.6%	6.6%	5.6%	6.6%	5.6%	6.6%	5.6%	6.6%	5.6%	6.6%			
	Ágúst	4.1%	7.0%	6.7%	6.6%	8.3%	11.3%	10.3%	9.7%	5.4%	-4.3%	5.9%	4.3%	-3.2%	0.6%	-3.0%	-5.4%	-1.9%	-1.2%	-1.8%	-2.1%	-5.2%	6.6%	5.5%	6.6%	5.5%	6.6%	5.5%	6.6%	5.5%	6.6%	5.5%	6.6%	5.5%	6.6%	5.5%	6.6%	5.5%	6.6%			
	September	-1.9%	1.2%	-1.1%	-1.0%	0.6%	9.6%	6.6%	4.5%	-1.1%	0.2%	2.0%	1.8%	1.9%	3.8%	-10.0%	-3.4%	1.7%	-6.5%	-15.6%	-2.2%	-8.7%	3.9%	2.5%	3.9%	2.5%	3.9%	2.5%	3.9%	2.5%	3.9%	2.5%	3.9%	2.5%	3.9%	2.5%	3.9%	2.5%	3.9%	2.5%		
	Oktober	-4.3%	0.4%	0.8%	0.4%	13.8%	8.7%	10.1%	5.2%	-0.5%	2.8%	2.2%	-3.8%	1.4%	7.4%	3.2%	-2.8%	3.8%	-1.7%	9.4%	-3.2%	5.2%	6.4%	4.4%	6.4%	4.4%	6.4%	4.4%	6.4%	4.4%	6.4%	4.4%	6.4%	4.4%	6.4%	4.4%	6.4%	4.4%	6.4%	4.4%		
	November	1.4%	14.6%	11.3%	11.6%	15.3%	16.4%	16.1%	18.1%	15.4%	14.9%	16.8%	14.3%	10.3%	15.5%	16.3%	17.4%	14.5%	12.9%	-7.6%	0.9%	1.0%	15.3%	14.5%	15.3%	14.5%	15.3%	14.5%	15.3%	14.5%	15.3%	14.5%	15.3%	14.5%	15.3%	14.5%	15.3%	14.5%	15.3%	14.5%		
	Desember	-9.2%	-1.6%	1.6%	0.6%	5.9%	7.4%	7.4%	1.0%	-3.3%	-3.2%	-0.9%	-2.3%	-3.0%	-3.3%	-2.3%	-4.0%	2.0%	-3.8%	1.5%	-5.9%	-2.5%	4.5%	3.1%	4.5%	3.1%	4.5%	3.1%	4.5%	3.1%	4.5%	3.1%	4.5%	3.1%	4.5%	3.1%	4.5%	3.1%	4.5%			
	Samtals	4.0%	5.8%	5.3%	5.4%	8.9%	8.4%	7.9%	9.4%	5.1%	1.5%	6.7%	1.8%	3.2%	5.2%	3.3%	1.2%	3.8%	1.2%	-7.2%	1.5%	6.8%	6.1%	6.8%	6.1%	6.8%	6.1%	6.8%	6.1%	6.8%	6.1%	6.8%	6.1%	6.8%	6.1%	6.8%	6.1%	6.8%				
Mismunur milli ára 2007 og 2008	Janúar	-11.1%	-0.6%	-8.2%	6.8%	9.1%	6.6%	7.1%	3.2%	-2.5%	-2.2%	0.7%	-1.0%	-0.8%	10.3%	-8.7%	-14.5%	4.7%	-14.8%	-9.1%	-14.3%	-12.5%	3.8%	1.0%	-12.5%	3.8%	1.0%	-12.5%	3.8%	1.0%	-12.5%	3.8%	1.0%	-12.5%	3.8%	1.0%	-12.5%	3.8%	1.0%	-12.5%		
	Febrúar	3.7%	2.8%	-10.2%	-1.4%	3.3%	2.0%	-2.3%	-9.4%	-11.1%	-5.7%	-9.9%	-9.8%	-2.2%	-12.9%	-16.4%	-5.8%	-1.5%	-27.7%	-16.8%	-16.4%	-4.3%	-4.3%	-4.3%	-4.3%	-4.3%	-4.3%	-4.3%	-4.3%	-4.3%	-4.3%	-4.3%	-4.3%	-4.3%	-4.3%	-4.3%	-4.3%	-4.3%	-4.3%			
	Mars	23.1%	9.8%	13.5%	13.1%	18.8%	5.3%	9.1%	10.1%	14.2%	23.9%	12.9%	24.3%	20.7%	1.4%	33.1%	4.8%	10.6%	-6.8%	-29.7%	-4.0%	-13.4%	10.3%	11.2%	10.3%	11.2%	10.3%	11.2%	10.3%	11.2%	10.3%	11.2%	10.3%	11.2%	10.3%	11.2%	10.3%	11.2%	10.3%	11.2%		
	Apríl	-25.1%	-7.7%	-7.6%	-8.3%	-0.7%	7.1%	4.7%	-7.7%	-15.6%	-24.1%	-12.6%	-25.6%	-21.6%	-8.4%	-19.2%	-26.9%	-15.5%	-24.3%	-46.2%	-30.1%	-34.1%	-2.9%	-6.0%	-2.9%	-6.0%	-2.9%	-6.0%	-2.9%	-6.0%	-2.9%	-6.0%	-2.9%	-6.0%	-2.9%	-6.0%	-2.9%	-6.0%	-2.9%			
	Mai	-16.4%	-1.9%	-0.2%	-1.3%	2.7%	2.4%	2.5%	-2.5%	-4.7%	-0.9%	-3.1%	0.0%	-0.7%	3.4%	17.7%	2.8%	2.8%	-4.2%	-14.2%	-9.1%	-9.1%	0.8%	0.1%	0.8%	0.1%	0.8%	0.1%	0.8%	0.1%	0.8%	0.1%	0.8%	0.1%	0.8%	0.1%	0.8%	0.1%	0.8%			
	Júní	-7.4%	1.5%	1.6%	-0.6%	-2.3%	-1.7%	-4.2%	-1.7%	-4.4%	-6.4%	-5.2%	-3.8%	-8.2%	-7.3%	-9.4%	-11.2%	-7.9%</																								

Mánaðarleg dreifing umferðar um 16. lykilteljara á Hringvegi.

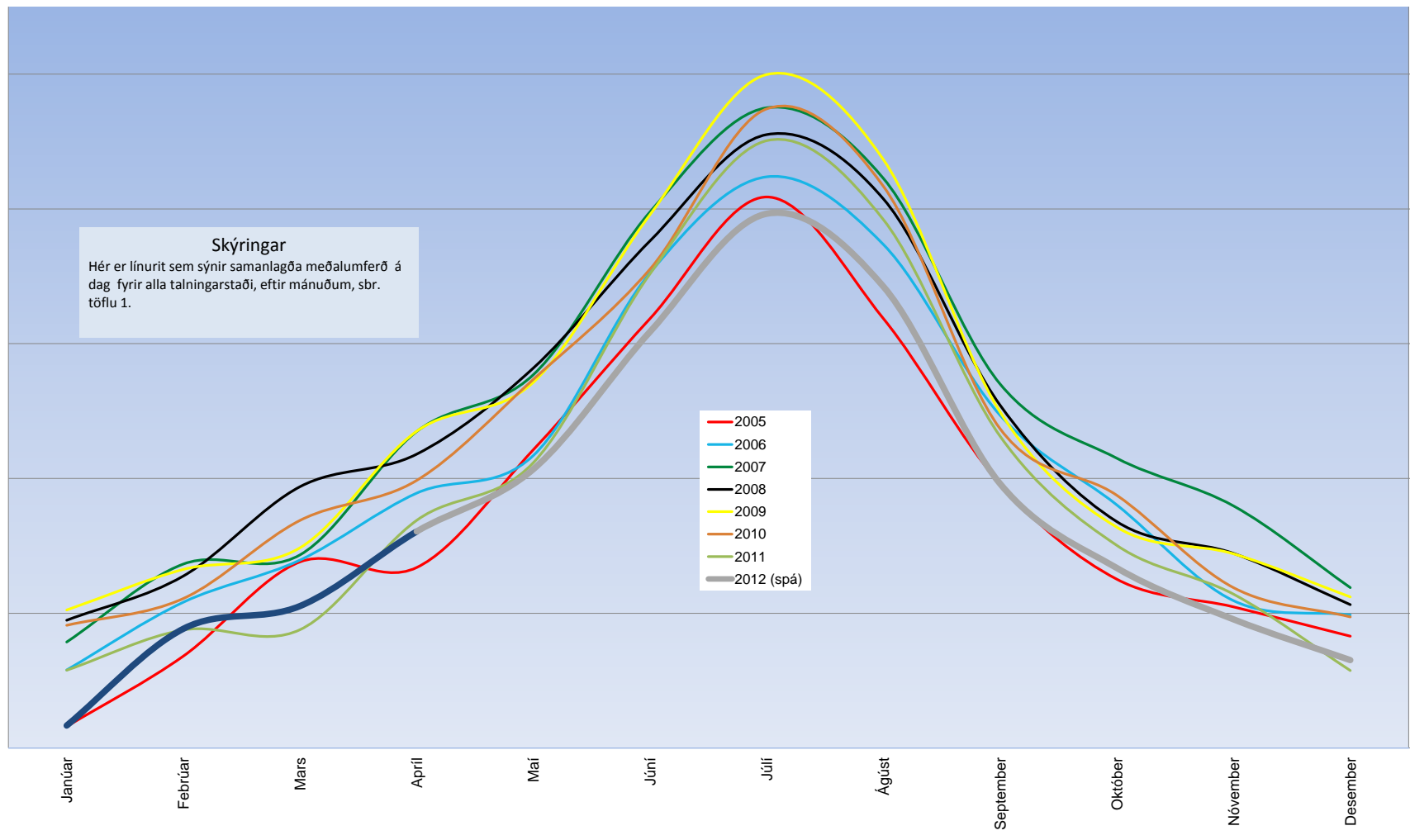


Samanlögð meðalumferð, í mælipunktum, á dag.

Fjöldi bíla

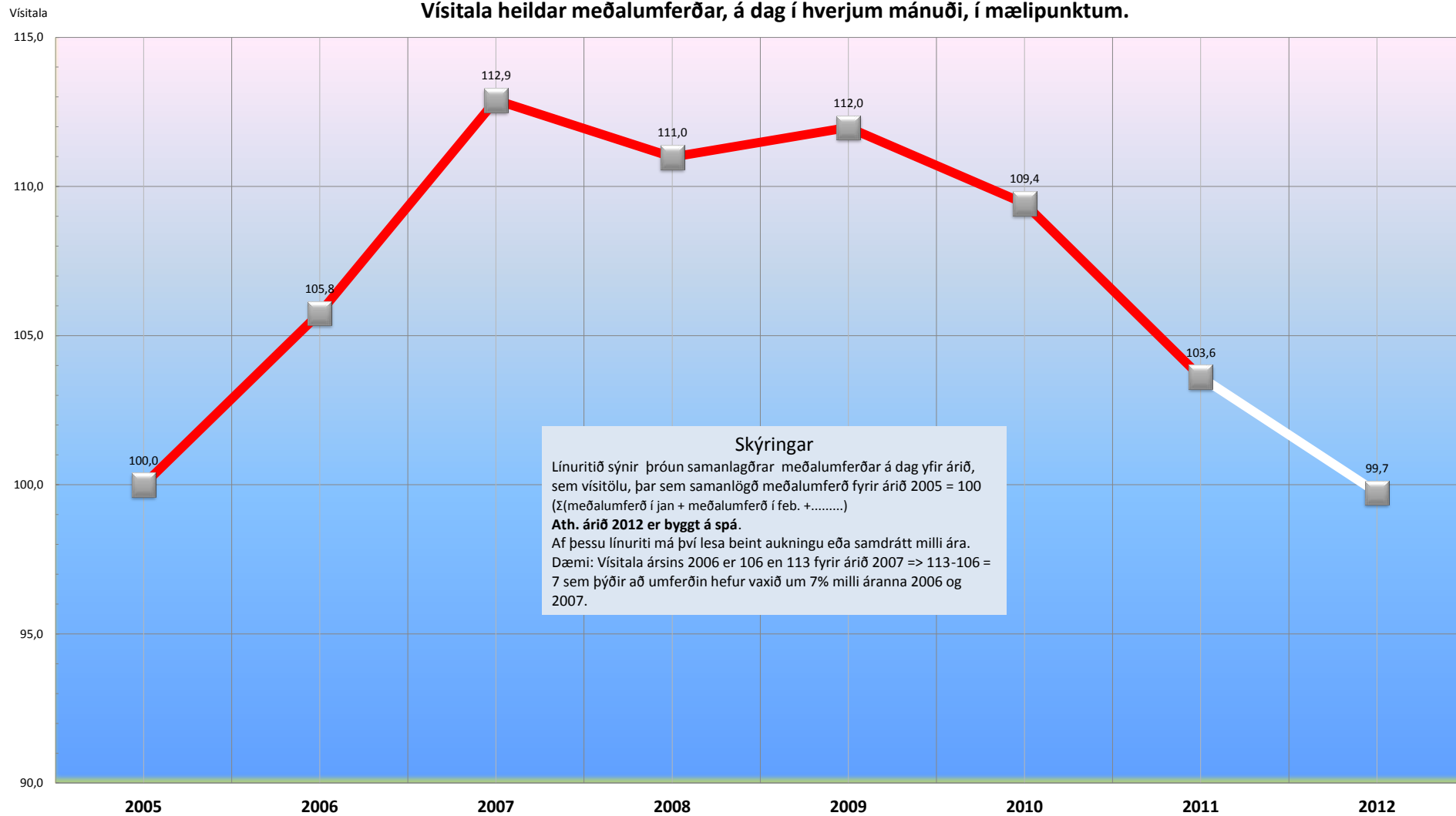
Skýringar
Hér er línurit sem sýnir samanlagða meðalumferð á dag fyrir alla talningarstaði, eftir mánuðum, sbr. töflu 1.

- 2005
- 2006
- 2007
- 2008
- 2009
- 2010
- 2011
- 2012 (spá)

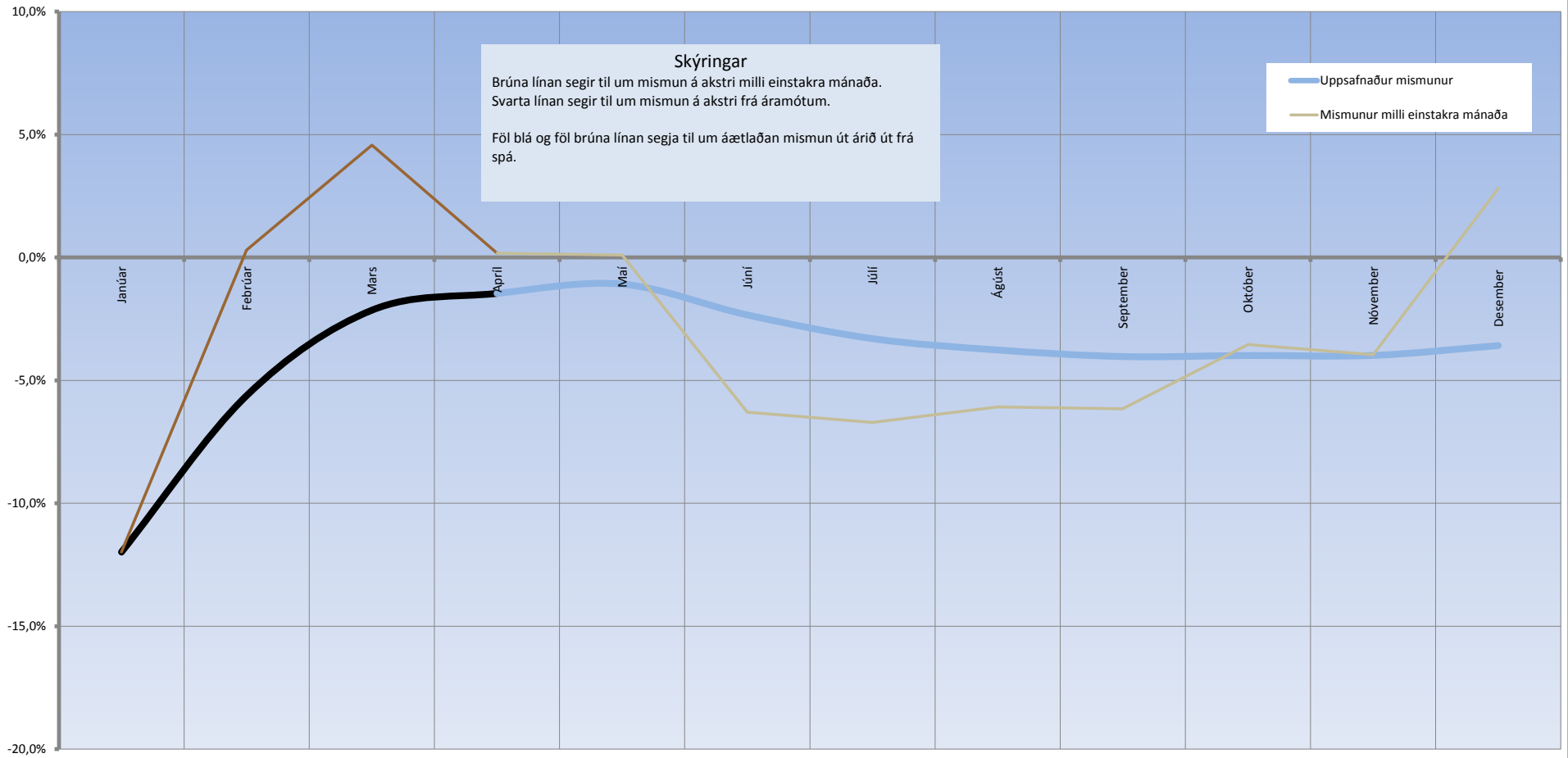


Mánuður

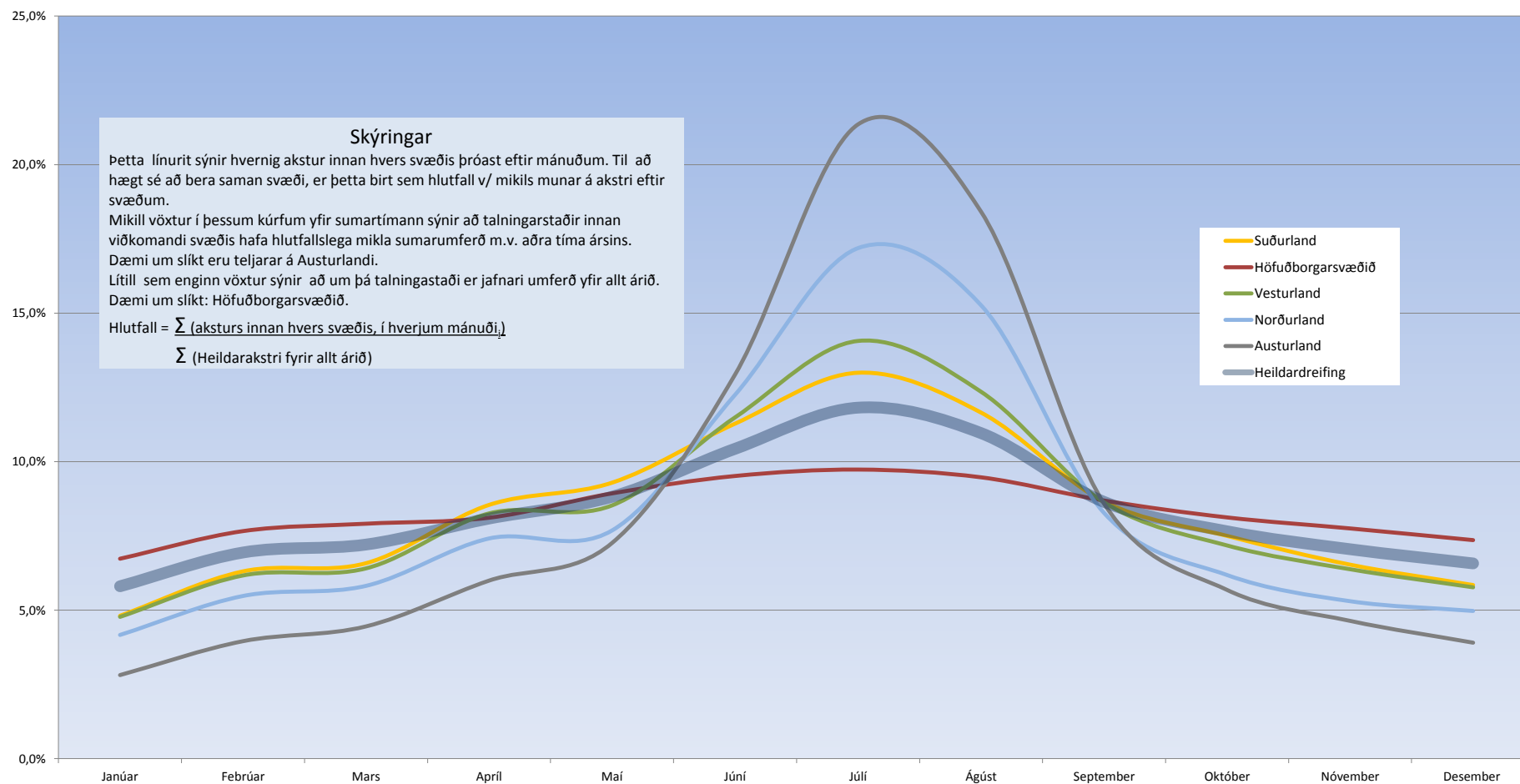
Vísitala heildar meðalumferðar, á dag í hverjum mánuði, í mælipunktum.



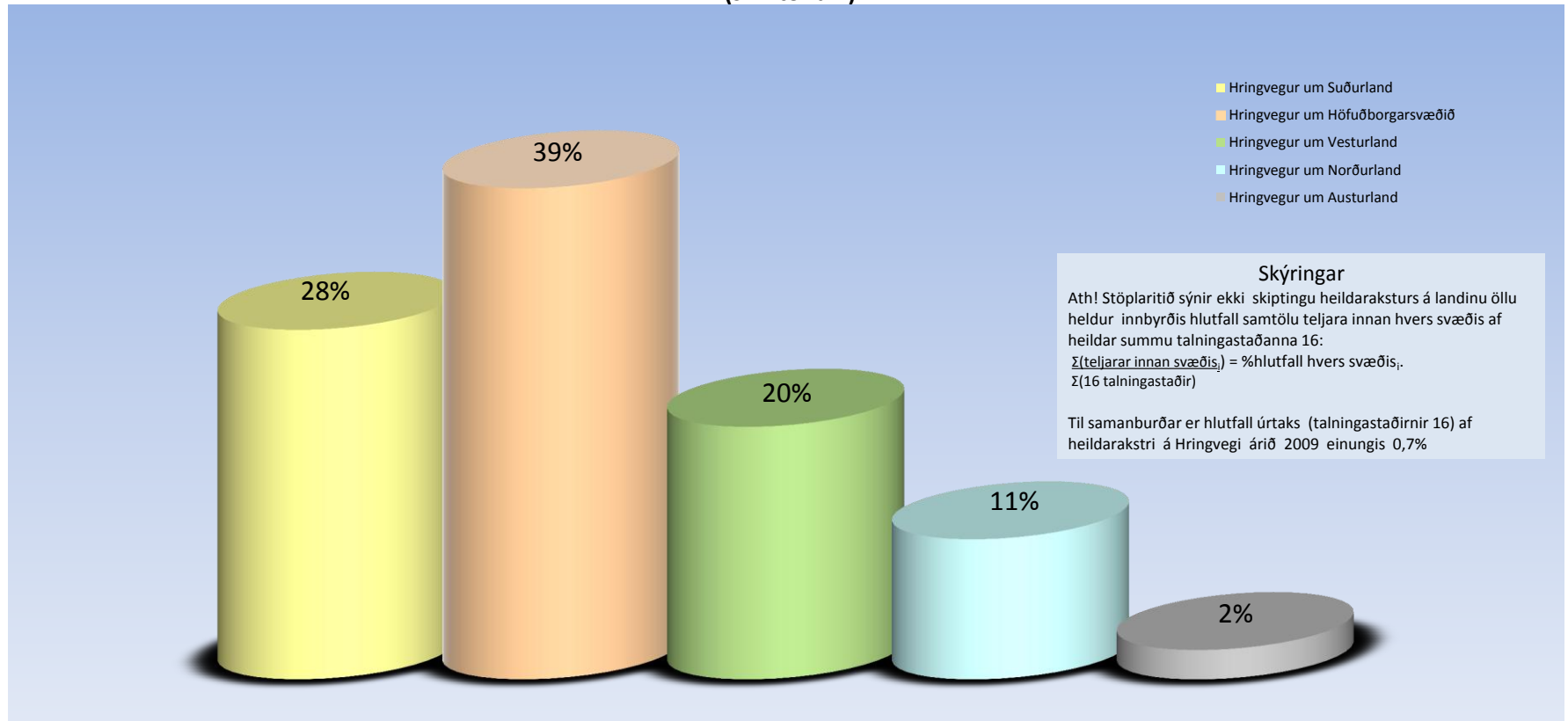
Mismunur á akstri milli árunna 2011 og 2012



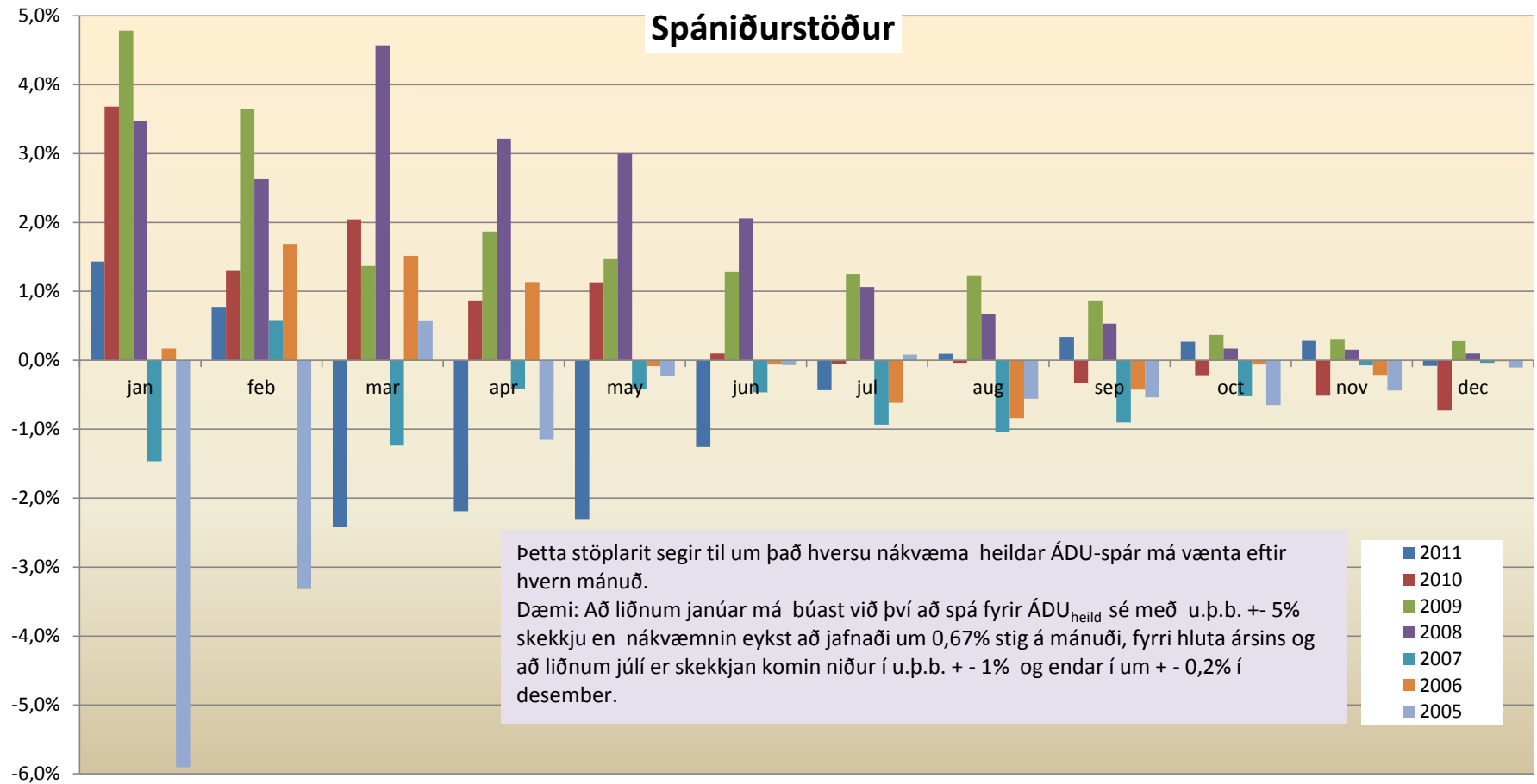
Spá um hlutfallsleg þróun aksturs á Hringvegi innan hvers svæðis 2012



Innbyrðis akstursvægi talningastaðanna 16 um svæðin árið 2011
(skv. töflu 1)



Spániðurstöður



Þetta stöplarit segir til um það hversu nákvæma heildar ÁDU-spár má vænta eftir hvern mánuð.

Dæmi: Að liðnum janúar má búast við því að spá fyrir ÁDU_{heild} sé með u.þ.b. +- 5% skekkju en nákvæmnin eykst að jafnaði um 0,67% stig á mánuði, fyrri hluta ársins og að liðnum júlí er skekkjan komin niður í u.þ.b. +- 1% og endar í um +- 0,2% í desember.

- 2011
- 2010
- 2009
- 2008
- 2007
- 2006
- 2005