

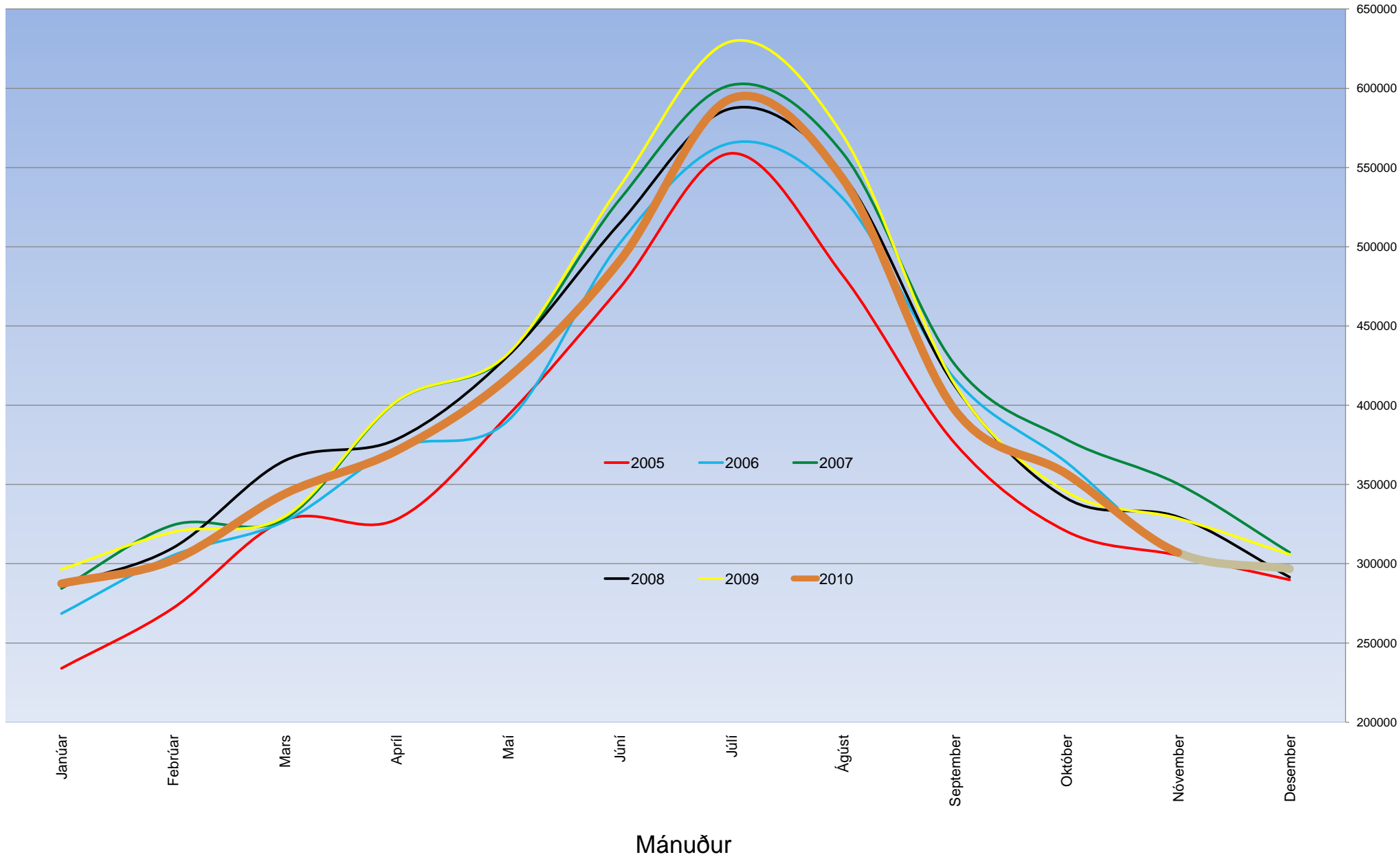
Tafla 1. Sýnr hieldarakstur á milli ára í sömu mánuðum eftir talingastaði

Lengd vegkafila í km -- Ár, mánu., Vegrn --		Nöfn talingastaða																			Afstur samtals																																																																															
		Suburland				Höfuðborarsvæðið				Vesturland				Norðurland				Austurland																																																																																		
		Hinnregur á Myrdalsand Hinnregur vestan Höfnavallar	Hinnregur á Hlíflingavík Hinnregur á Hlíflingavík Hinnregur á Hlíflingavík	Hinnregur á Hlíflingavík Hinnregur á Hlíflingavík Hinnregur á Hlíflingavík	Hinnregur á Hlíflingavík Hinnregur á Hlíflingavík Hinnregur á Hlíflingavík	Hinnregur á Gethalví Hinnregur á Gethalví Hinnregur á Gethalví	Hinnregur á Gethalví Hinnregur á Gethalví Hinnregur á Gethalví	Hinnregur á Gethalví Hinnregur á Gethalví Hinnregur á Gethalví	Hinnregur á Gethalví Hinnregur á Gethalví Hinnregur á Gethalví	Hinnregur á Gethalví Hinnregur á Gethalví Hinnregur á Gethalví	Hinnregur á Gethalví Hinnregur á Gethalví Hinnregur á Gethalví	Hinnregur á Gethalví Hinnregur á Gethalví Hinnregur á Gethalví	Hinnregur á Gethalví Hinnregur á Gethalví Hinnregur á Gethalví	Hinnregur á Gethalví Hinnregur á Gethalví Hinnregur á Gethalví	Hinnregur á Gethalví Hinnregur á Gethalví Hinnregur á Gethalví	Hinnregur á Gethalví Hinnregur á Gethalví Hinnregur á Gethalví	Hinnregur á Gethalví Hinnregur á Gethalví Hinnregur á Gethalví	Hinnregur á Gethalví Hinnregur á Gethalví Hinnregur á Gethalví	Hinnregur á Gethalví Hinnregur á Gethalví Hinnregur á Gethalví	Hinnregur á Gethalví Hinnregur á Gethalví Hinnregur á Gethalví																																																																																
1-20	1-21	1-22	1-23	1-24	1-25	1-26	1-27	1-28	1-29	1-30	1-31	1-32	1-33	1-34	1-35	1-36	1-37	1-38	1-39	1-40	1-41	1-42	1-43	1-44	1-45	1-46	1-47	1-48	1-49	1-50	1-51	1-52	1-53	1-54	1-55	1-56	1-57	1-58	1-59	1-60	1-61	1-62	1-63	1-64	1-65	1-66	1-67	1-68	1-69	1-70	1-71	1-72	1-73	1-74	1-75	1-76	1-77	1-78	1-79	1-80	1-81	1-82	1-83	1-84	1-85	1-86	1-87	1-88	1-89	1-90	1-91	1-92	1-93	1-94	1-95	1-96	1-97	1-98	1-99	1-100																				
1-100	1-101	1-102	1-103	1-104	1-105	1-106	1-107	1-108	1-109	1-110	1-111	1-112	1-113	1-114	1-115	1-116	1-117	1-118	1-119	1-120	1-121	1-122	1-123	1-124	1-125	1-126	1-127	1-128	1-129	1-130	1-131	1-132	1-133	1-134	1-135	1-136	1-137	1-138	1-139	1-140	1-141	1-142	1-143	1-144	1-145	1-146	1-147	1-148	1-149	1-150	1-151	1-152	1-153	1-154	1-155	1-156	1-157	1-158	1-159	1-160	1-161	1-162	1-163	1-164	1-165	1-166	1-167	1-168	1-169	1-170	1-171	1-172	1-173	1-174	1-175	1-176	1-177	1-178	1-179	1-180	1-181	1-182	1-183	1-184	1-185	1-186	1-187	1-188	1-189	1-190	1-191	1-192	1-193	1-194	1-195	1-196	1-197	1-198	1-199	1-200

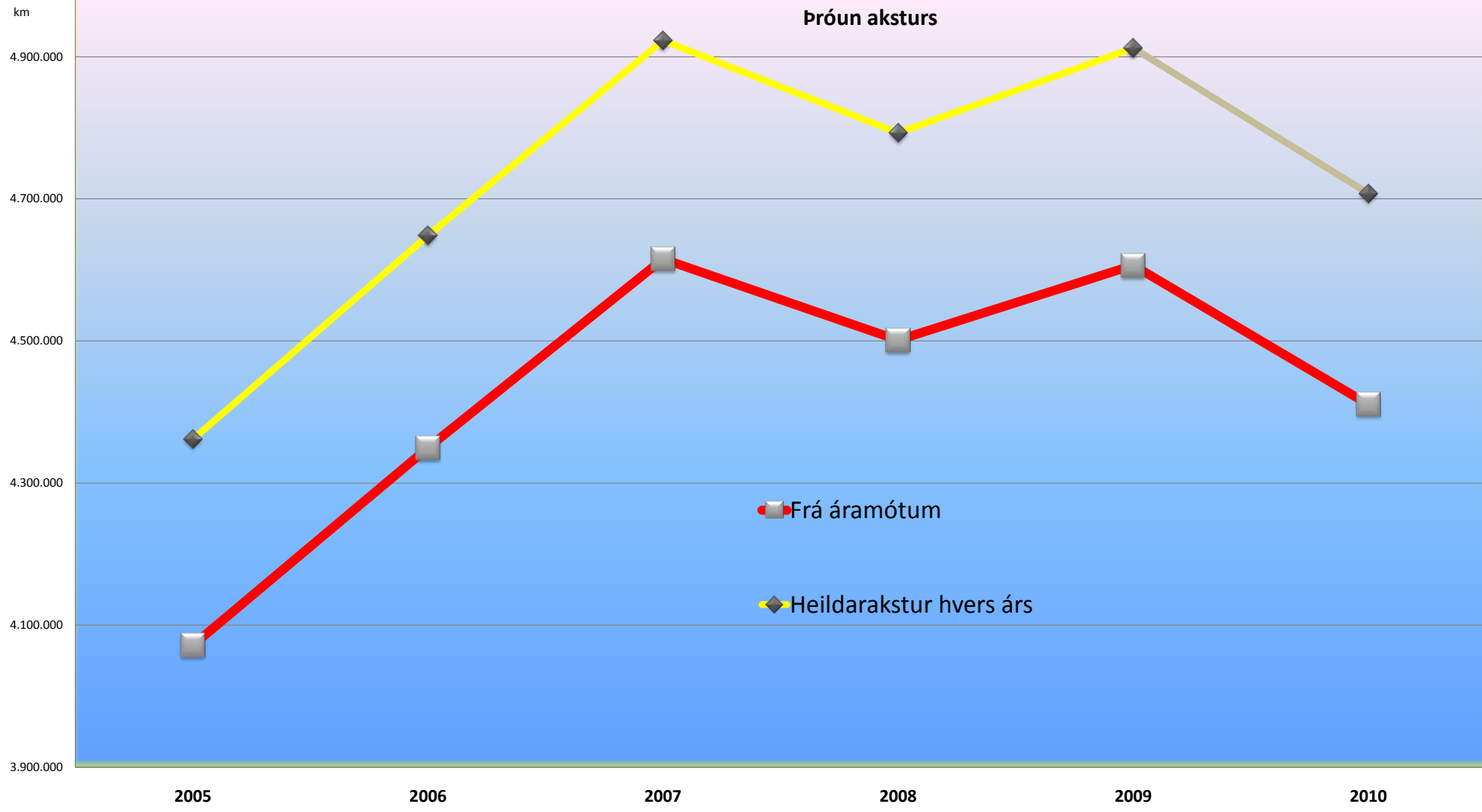
Tafla 2. Sýnrif hlutfallslegan mismun á milli ára í sömu mánuðum eftir talingastaðum

		Nöfn talingastaða																				Akstur samtals					
		Suðurland					Höfuðborgarsvæðið					Vesturland					Norðurland						Austurland				
Ár	mån. Vegnr--	1-b0	1-c2	1-d8	Samtals	1-a2	1-f3	Samtals	1-f6	1-g4	1-i1	Samtals	1-k7	1-p2	1-p6	1-q0	1-r4	Samtals	1-s4	1-t5	1-u2		Samtals				
Mismunur milli ára 2005 og 2006	Janúar	31.03%	8.28%	24.51%	22.70%	19.30%	2.84%	5.89%	22.65%	29.47%	20.31%	24.99%	11.87%	10.80%	23.24%	8.40%	25.29%	16.12%	27.47%	3.90%	-5.49%	7.81%	14.76%				
	Febrúar	27.45%	5.37%	22.38%	20.50%	16.75%	3.16%	5.84%	20.32%	22.63%	1.17%	17.87%	4.41%	-2.90%	9.39%	5.00%	8.40%	4.95%	15.13%	14.89%	2.00%	10.81%	12.20%				
	Mars	-14.40%	-7.88%	8.28%	5.73%	3.98%	3.18%	3.36%	4.42%	-2.75%	-23.24%	-4.01%	-23.90%	-22.87%	-9.47%	-25.00%	-19.05%	-18.73%	-14.97%	-19.67%	-22.22%	-18.81%	-10.24%				
	Apríl	63.51%	-11.86%	20.28%	20.32%	8.97%	2.40%	4.10%	6.78%	12.55%	13.88%	10.70%	15.63%	18.88%	14.76%	22.38%	3.87%	16.27%	19.67%	19.67%	11.78%	29.28%	20.38%	10.11%			
	Mai	7.40%	-4.50%	1.22%	0.79%	-2.54%	3.25%	1.80%	0.70%	0.05%	-13.20%	-2.09%	-14.17%	-16.19%	-11.46%	-4.73%	-5.45%	-12.28%	-1.90%	-5.53%	-2.65%	-3.38%	-0.84%				
	Júní	12.27%	1.41%	5.21%	5.06%	4.03%	10.90%	13.68%	10.38%	11.76%	7.59%	3.51%	6.25%	3.67%	7.30%	12.60%	3.44%	-0.60%	5.20%	5.93%	3.44%	-0.60%	5.20%	5.93%			
	Júlí	-9.40%	-5.89%	-2.44%	-3.36%	-0.12%	3.39%	2.40%	3.99%	7.12%	4.09%	5.36%	2.74%	5.65%	2.02%	2.91%	7.65%	5.45%	5.75%	-1.00%	-2.80%	0.67%	10.47%				
	Ágúst	16.47%	11.36%	10.79%	11.32%	8.97%	2.40%	4.10%	6.78%	12.55%	13.88%	10.70%	15.63%	18.88%	14.76%	22.38%	3.87%	16.27%	19.67%	19.67%	11.78%	29.28%	20.38%	10.11%			
	September	6.04%	5.29%	13.85%	12.67%	10.96%	12.67%	6.32%	10.56%	17.87%	7.32%	13.17%	9.56%	13.64%	12.29%	37.80%	3.67%	13.87%	25.57%	11.85%	18.23%	18.44%	10.81%				
	Oktober	17.75%	11.91%	16.04%	15.64%	7.08%	9.56%	9.00%	13.90%	21.59%	13.88%	17.06%	18.38%	16.42%	16.19%	26.64%	23.08%	18.34%	21.27%	3.40%	19.08%	13.81%	13.59%				
	November	2.84%	-2.11%	3.70%	3.03%	10.01%	-0.54%	1.64%	-1.47%	-3.86%	-8.44%	-3.41%	7.81%	-2.28%	-2.19%	0.50%	-8.33%	-4.69%	-5.34%	-1.73%	-1.69%	2.87%	0.44%				
	Desember	5.75%	1.46%	4.90%	4.56%	8.50%	1.34%	2.74%	5.41%	-4.84%	3.31%	0.79%	3.70%	4.71%	1.18%	16.23%	5.00%	4.08%	1.20%	0.75%	-0.98%	0.36%	3.00%				
Samtals	9.18%	2.41%	9.25%	8.45%	7.36%	3.31%	4.36%	8.56%	10.31%	4.60%	8.55%	4.76%	3.97%	4.62%	8.40%	3.67%	4.32%	9.54%	1.77%	6.25%	6.08%	5.56%					
Mismunur milli ára 2006 og 2007	Janúar	5.58%	0.80%	9.35%	8.38%	2.71%	5.04%	4.55%	8.29%	7.80%	3.40%	7.36%	3.30%	3.12%	-3.84%	8.89%	7.24%	0.99%	12.60%	-3.65%	13.95%	8.47%	5.88%				
	Febrúar	-2.56%	0.62%	6.99%	6.11%	4.02%	6.35%	5.84%	8.84%	4.81%	12.90%	7.81%	7.84%	12.63%	4.01%	10.95%	8.53%	7.55%	-11.04%	-4.32%	-2.14%	-6.06%	6.29%				
	Mars	6.25%	-0.22%	-2.08%	-1.69%	-1.92%	0.84%	0.23%	3.80%	-1.57%	4.36%	1.66%	1.64%	5.49%	5.76%	10.70%	6.62%	5.07%	17.18%	-6.12%	16.11%	9.22%	0.46%				
	Apríl	0.29%	7.35%	3.61%	3.88%	4.71%	8.21%	7.33%	12.94%	7.12%	11.09%	11.05%	12.93%	20.25%	15.27%	24.64%	26.19%	16.88%	19.32%	47.88%	-1.19%	19.04%	7.86%				
	Mai	16.84%	14.25%	8.14%	8.10%	10.44%	7.22%	6.37%	16.57%	11.87%	17.19%	14.63%	16.86%	19.73%	12.71%	17.39%	19.23%	16.16%	15.94%	-2.51%	7.61%	7.65%	5.41%				
	Júní	6.38%	10.75%	6.22%	6.74%	7.42%	8.20%	7.89%	8.54%	3.65%	-5.97%	3.41%	5.04%	-1.18%	4.84%	5.29%	2.66%	0.30%	1.95%	-2.30%	8.64%	3.02%	6.84%				
	Júlí	7.46%	6.52%	10.20%	9.56%	10.44%	8.81%	-8.65%	6.49%	-1.82%	-3.10%	-0.92%	-1.64%	-5.07%	-2.16%	-5.29%	-20.17%	-6.69%	-5.29%	-20.17%	-6.69%	-7.79%	6.44%				
	Ágúst	4.12%	7.05%	5.49%	5.59%	8.34%	11.34%	10.52%	9.72%	8.02%	-4.27%	5.86%	-4.27%	-3.24%	0.60%	-2.98%	-5.36%	-2.65%	-1.46%	-12.84%	-2.12%	-0.71%	-1.11%				
	September	-1.86%	1.24%	-2.37%	-2.48%	0.66%	9.56%	7.27%	4.56%	3.13%	0.24%	3.20%	1.78%	1.95%	3.82%	-0.85%	-3.42%	0.69%	-6.55%	-6.96%	-2.03%	-8.13%	5.36%				
	Oktober	-0.26%	0.42%	-0.94%	-0.90%	13.80%	8.66%	9.81%	5.15%	2.77%	-2.78%	2.96%	-3.59%	1.40%	7.40%	3.18%	-2.84%	7.12%	-1.72%	-8.39%	-3.21%	-4.85%	3.95%				
	November	1.38%	14.59%	10.54%	10.71%	15.28%	16.42%	16.17%	18.11%	17.09%	14.85%	17.19%	14.33%	10.31%	15.45%	16.34%	17.36%	14.21%	12.90%	-7.65%	0.85%	1.50%	14.22%				
	Desember	-9.24%	-1.60%	1.26%	0.73%	5.34%	7.80%	7.50%	10.9%	-4.81%	-3.20%	-1.84%	-2.33%	-3.00%	5.31%	-2.25%	-3.97%	0.42%	-3.85%	1.48%	-5.94%	-2.76%	2.85%				
Samtals	4.01%	5.75%	6.71%	6.89%	6.87%	8.37%	8.01%	9.02%	6.01%	1.48%	6.40%	1.52%	3.23%	5.21%	3.27%	1.25%	3.25%	1.18%	-7.24%	3.45%	-1.29%	5.81%					
Mismunur milli ára 2007 og 2008	Janúar	-11.11%	-0.62%	-8.14%	-7.46%	8.12%	6.77%	7.04%	3.16%	-1.91%	-2.19%	0.24%	-1.01%	-0.76%	10.32%	-8.67%	-14.53%	2.12%	-14.83%	-9.09%	-14.29%	-12.11%	0.60%				
	Febrúar	3.68%	-2.76%	-12.41%	-11.11%	-1.36%	3.32%	2.32%	-2.28%	-5.32%	-11.09%	-4.92%	-9.93%	-9.81%	-2.22%	-12.88%	-16.43%	-7.49%	-1.84%	-27.74%	-16.84%	-15.69%	-4.40%				
	Mars	23.08%	9.62%	12.91%	12.86%	18.85%	5.34%	8.28%	10.68%	15.16%	23.19%	14.50%	24.30%	20.65%	1.36%	33.14%	4.83%	15.14%	-6.85%	-29.71%	-4.03%	-12.38%	11.19%				
	Apríl	-25.14%	-7.73%	-1.31%	-7.66%	-0.74%	7.15%	9.21%	-7.70%	-13.19%	-24.13%	-13.01%	-25.29%	-21.88%	-8.44%	-19.19%	-26.88%	-18.41%	-24.09%	-46.19%	-39.12%	-33.67%	-5.82%				
	Mai	-16.38%	-1.94%	-0.09%	-0.92%	-2.58%	2.42%	2.48%	-2.55%	-5.84%	-0.89%	-3.66%	0.00%	-0.68%	3.40%	17.72%	-2.82%	2.88%	-4.17%	-14.16%	-0.09%	-8.83%	0.00%				
	Júní	-7.36%	1.48%	1.55%	1.14%	-0.57%	-2.27%	-1.82%	-4.19%	-6.64%	-9.35%	-6.21%	-7.48%	-8.25%	-7.32%	-9.36%	-11.23%	-8.09%	-11.46%	-18.89%	-12.36%	-13.80%	-2.83%				
	Júlí	-3.12%	7.84%	-4.74%	-3.08%	-2.30%	-2.20%	-2.23%	-4.21%	-5.73%	-0.86%	-4.09%	-1.09%	-0.85%	-0.72%	3.33%	3.37%	0.05%	1.91%	1.68%	0.51%	1.32%	-2.45%				
	Ágúst	-3.96%	-1.86%	-3.21%	-3.09%	-3.39%	-0.36%	-1.16%	-0.34%	-3.08%	-5.73%	-1.67%	-4.26%	-5.90%	-3.33%	-0.61%	0.16%	3.30%	-6.68%	-8.39%	-3.79%	-8.07%	-2.47%				
	September	-0.95%	1.13%	-4.52%	-3.77%	-2.17%	-1.06%	-1.33%	-5.23%	-7.95%	-3.56%	-6.13%	-4.99%	-6.36%	-0.16%	5.16%	0.71%	-2.20%	2.72%	-5.88%	-2.70%	-1.73%	-3.15%				
	Oktober	-3.08%	-2.01%	-13.65%	-12.09%	-14.97%	-2.37%	-5.29%	-10.11%	-12.31%	-14.48%	-11.71%	-12.14%	-14.46%	-17.63%	-21.92%	-18.13%	-16.04%	-18.71%	-16.86%	-9.27%	-14.71%	-8.80%				
	November	-0.48%	-1.14%	-4.31%	-3.88%	-14.88%	-3.67%	-6.09%	-8.60%	-7.92%	-10.93%	-7.86%	-7.71%	-8.41%	-7.00%	-10.64%	-15.49%	-8.18%	-13.93%	-16.44%	-13.56%	-9.27%	-5.93%				
	Desember	-6.07%	4.88%	-13.76%	-1.59%	-9.54%	-1.01%	-1.96%	-2.04%	-0.47%	-3.17%	-1.59%	-1.75%	-3.78%	-3.83%	-2.30%	-3.31%	-3.16%	-0.80%	-27.01%	-11.58%	-12.96%	-5.06%				
Samtals	-5.00%	0.77%	-4.40%	-3.89%	-1.96%	0.89%	0.19%	-2.88%	-8.84%	-5.63%	-4.23%	-4.84%	-5.33%	-3.30%	-1.25%	-5.18%	-4.02%	-6.65%	-14.21%	-8.22%	-9.56%	-2.64%					
Mismunur milli ára 2008 og 2009	Janúar	2.78%	12.07%	11.42%	11.30%	-2.41%	2.18%	1.23%	0.87%	1.79%	1.40%	1.32%	1.53%	3.62%	-6.35%	-1.68%	-4.00%	-1.80%	-1.90%	-29.17%	-8.33%	-13.02%	3.64%				
	Febrúar	-15.23%	9.23%	9.84%	9.20%	0.29%	-0.67%	-0.47%	0.13%	2.52%	8.61%	2.86%	10.71%	10.19%	-4.76%	6.40%	-2.56%	3.47%	1.67%	-6.25%	-3.61%	-2.37%	3.21%				
	Mars	-26.47%	-1.33%	-11.80%	-11.18%	-18.69%	2.39%	-2.61%	-12.44%	-15.97%	-24.71%	-16.04%	-22.33%	-18.60%	-13.59%	-19.08%	-18.78%	-14.84%	-4.12%	-27.35%	-16.82%	-18.65%	-8.65%				
	Apríl	42.47%	16.52%	6.06%	8.11%	-4.70%	-1.21%	-2.02%	4.31%	13.02%	29.59%	11.88%	32.52%	28.57%	6.17%	24.46%	30.97%	20.38%	32.70%	7.50%	48.29%	31.18%	6.35%				
	Mai	14.36%	7.79%	1.03%	2.20%	-7.93%	-2.80%	-4.05%	3.97%	7.41%	10.89%	7.12%	13.95%	14.40%	7.14%	25.73%	28.22%	14.60%	26.88%	17.04%	40.09%	25.30%	4.52%				
	Júní	22.74%	11.27%	8.96%	10.12%	-2.09%	3.78%	2.17%	5.17%	7.34%	7.63%	6.61%	10.42%	9.58%	7.89%	12.63%	11.54%	10.02%	11.74%	7.04%	18.14%	13.04%	7.21%				
	Ágúst	10.91%	10.67%	3.51%	3.65%	-2.78%	6.69%	4.23%	-1.74%	-0.55%	3.90%	-0.15%	7.73%	8.06%	6.10%	14.70%	15.43%	9.05%	14.61%	12.23%	18.09%	15.34%	4.59%				
	September	9.81%	0.86%	-1.30%	-0.62%	-11.23%	2.38%	-0.84%	-0.84%	-0.18%	5.33%	0.49%	6.45%	6.91%	-5.74%	11.96%	14.79%	9.53%	14.77%	11.67%	13.89%	13.57%	9.25%				
	Oktober	-1.77%	1.45%	4.85%	4.23%	-5.03%	-2.04%	-2.66%	0.17%	0.29%	2.50%	0.66%	8.48%	8.70%	4.88%	20.61%	16.43%	8.72%	23.02%	6.62%	-2.19%	6.50%	1.19%				
	November	-0.46%	2.98%	-3.32%	-2.56%	-4.65%	1.53%	0.28%	-0.52%	-0.16%	-3.35%	-0.78%	7.31%	6.12%	-1.11%	1											

Heildarakstur í hverjum mánuði



Þróun aksturs



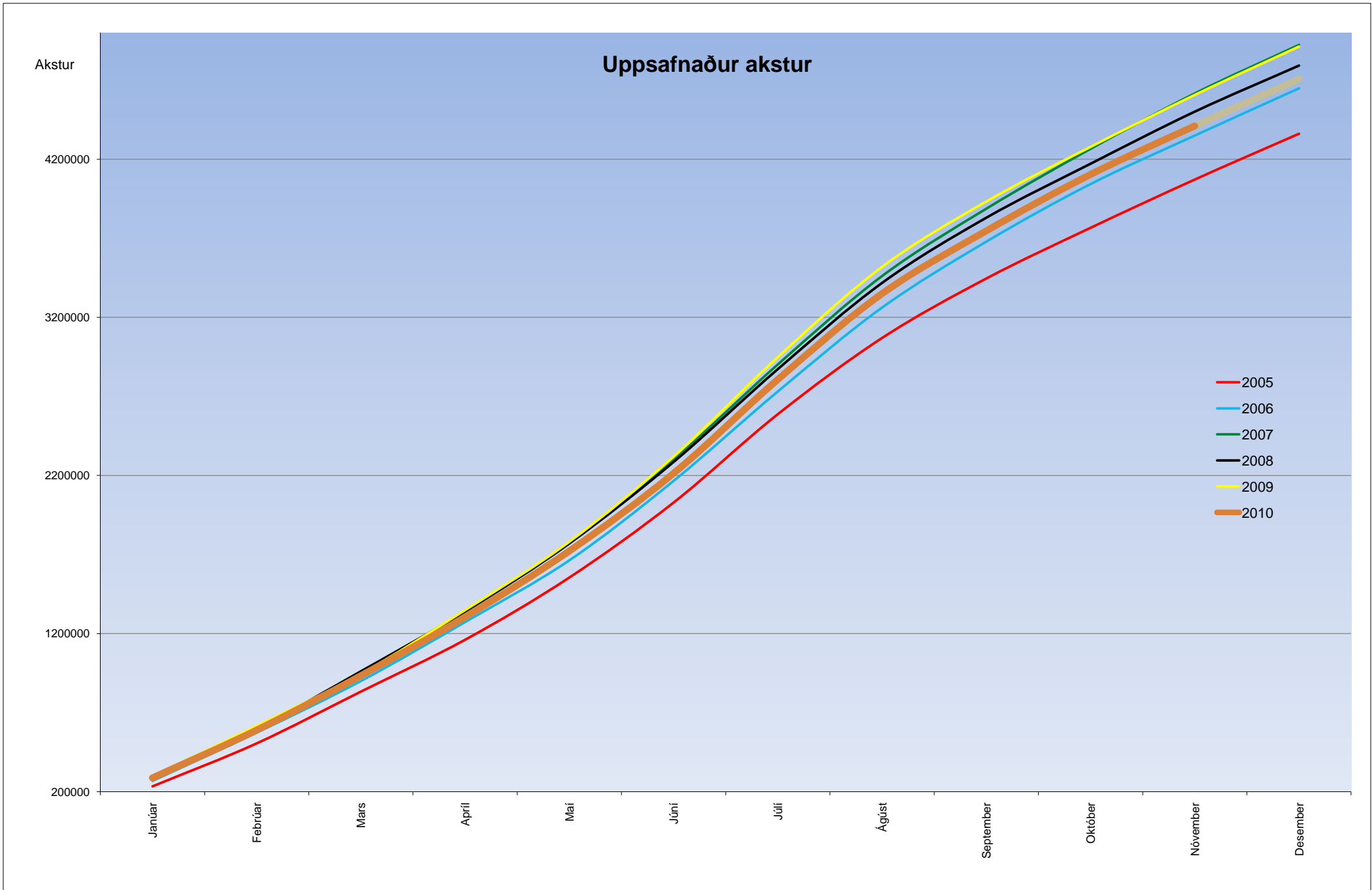
Uppsafnaður akstur

Akstur

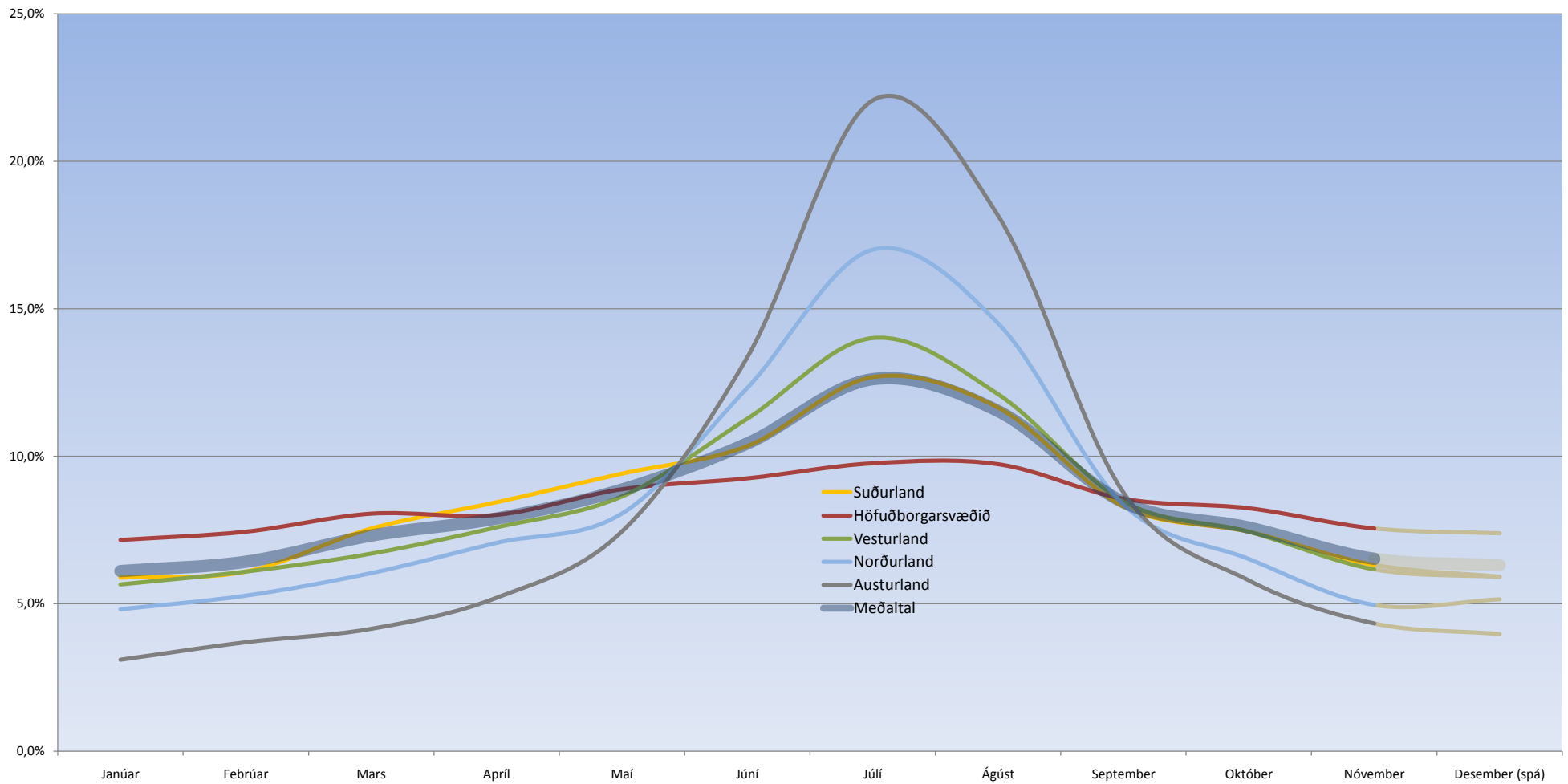
4200000
3200000
2200000
1200000
200000

Janúar Febrúar Mars Apríl Maí Júní Júlí Agust September Október Nóvember Desember

- 2005
- 2006
- 2007
- 2008
- 2009
- 2010



Hlutfallsleg þróun aksturs innan hvers svæðis 2010



Vægi hvers svæðis í akstri á öllum talningastöðum 2009

