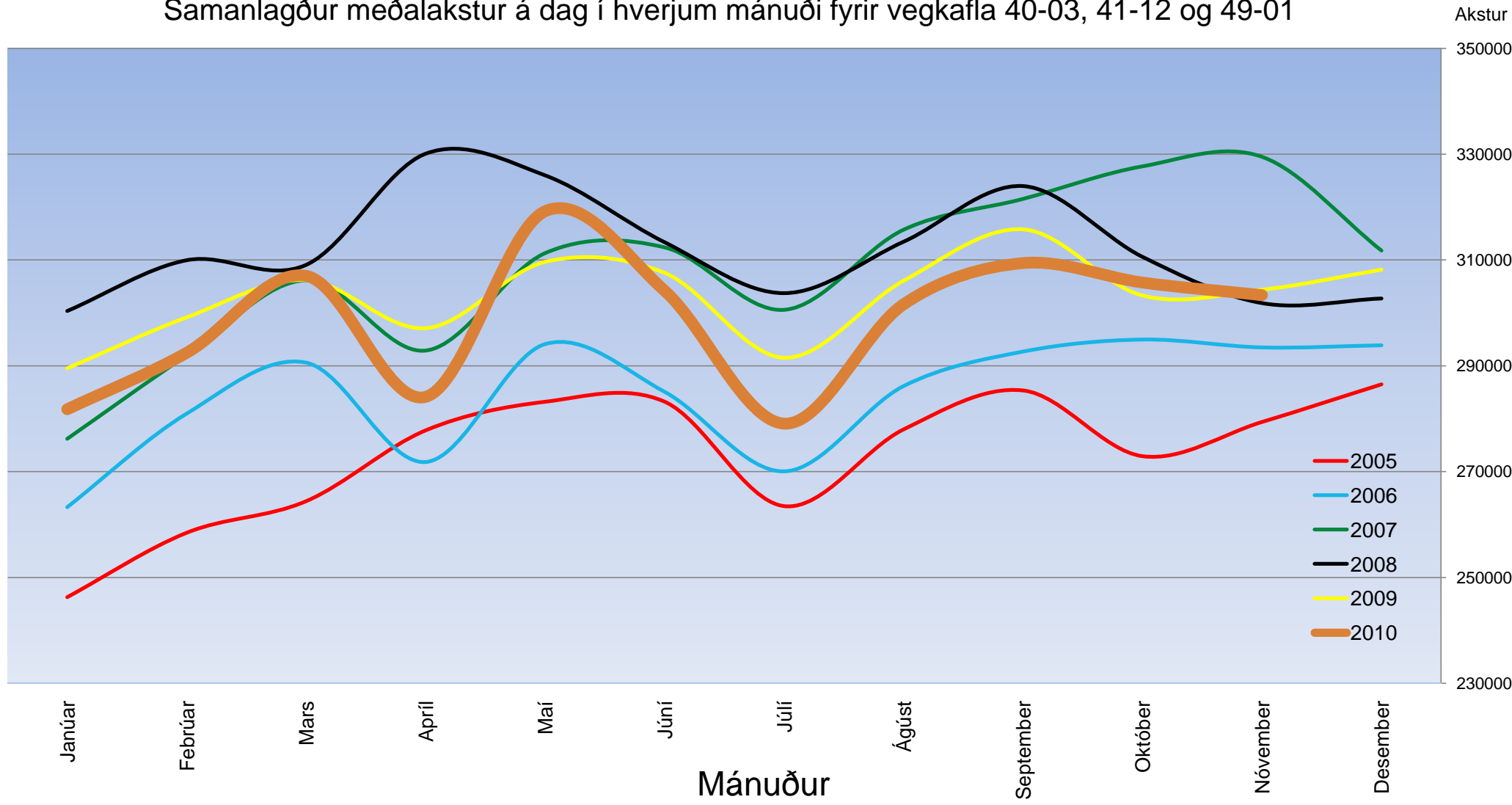


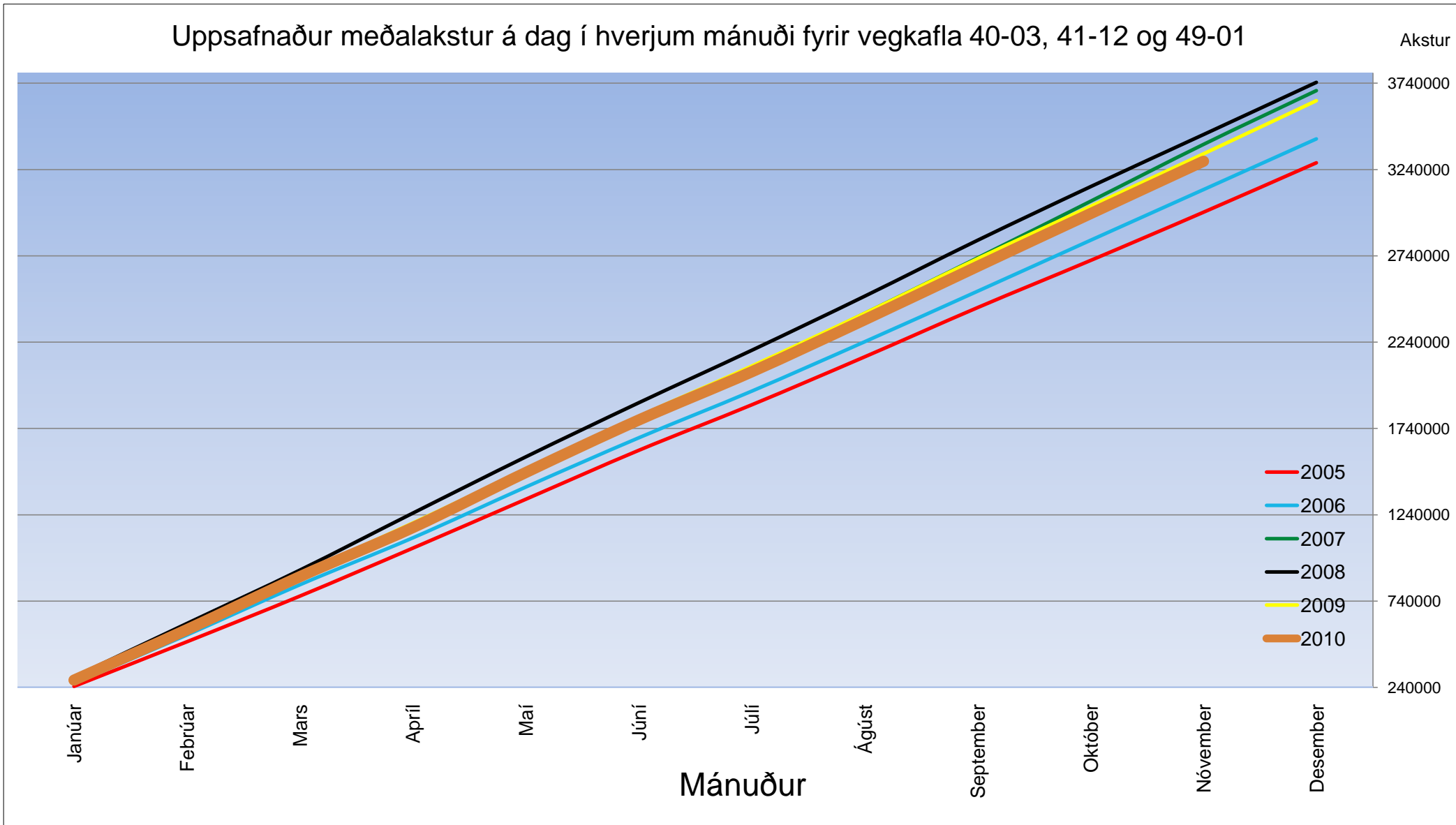
Tafla 1. sýnir meðalækstur á dag eftir mánuðum í þremur völdum sniðum innan Höfuðborgarsvæðis.

Höfuðborgarsvæðið						
		Hafnarfarðarvegur sunnan Kópavogsbæjar	Reykjanesbraut við Dalveg í Kópavogi	Nesbraut móts við Skjelling, (Artúnsbrekka)	samtals	Uppsafnað
Lengd vegkafla í km →		2,01	3,78	1,20	6,99	
Ár	mán. Vegnr.→	40-03	41-12	49-01		
2005	Janúar	74298	133101	38858	246257	246257
	Febrúar	80010	136134	42293	258436	504694
	Mars	79021	142003	43382	264407	769101
	Apríl	79370	153283	45140	277793	1046893
	Mái	80860	154848	47494	283202	1330095
	Júní	78535	156224	48457	283216	1613310
	Júlí	69532	146789	47149	263469	1876780
	Ágúst	77518	153139	47317	277974	2154754
	September	82921	155676	46745	285341	2440095
	Október	79303	148951	44658	272911	2713006
	Nóvember	79688	155173	44521	279382	2992389
	Desember	80762	161576	44160	286498	3278887
Samtals		941816	1796895	540175	3278887	
2006	Janúar	76358	145292	41618	263268	263268
	Febrúar	82223	153736	45001	280961	544229
	Mars	85526	158170	46904	290600	834829
	Apríl	77158	149571	45083	271811	1106641
	Mái	84468	160699	48944	294112	1400752
	Júní	79216	156953	48916	285085	1685837
	Júlí	71936	150153	47956	270044	1955882
	Ágúst	78131	159454	48582	286167	2242048
	September	85938	157403	49355	292695	2534744
	Október	86548	160106	48320	294974	2829718
	Nóvember	86860	157883	48734	293477	3123195
	Desember	85489	161674	46721	293885	3417080
Samtals		979850	1871095	566134	3417080	
2007	Janúar	81739	148966	45479	276183	276183
	Febrúar	85698	157172	49075	291946	568129
	Mars	89869	165262	51032	306163	874293
	Apríl	82663	159350	50860	292873	1167165
	Mái	87998	168274	55020	311292	1478457
	Júní	85809	169794	56776	312378	1790835
	Júlí	79475	165456	55640	300571	2091407
	Ágúst	86575	173230	55912	315716	2407123
	September	89517	176639	55388	321545	2728668
	Október	91578	180287	55840	327704	3056373
	Nóvember	91628	183201	54672	329501	3385874
	Desember	84320	176881	50572	311772	3697646
Samtals		1036869	2024513	636265	3697646	
2008	Janúar	84579	166048	49726	300352	300352
	Febrúar	84844	172799	52316	309959	610312
	Mars	86754	169824	52501	309079	919391
	Apríl	91059	182306	56738	330103	1249494
	Mái	87234	181969	56801	326004	1575498
	Júní	81208	175702	56448	313358	1888856
	Júlí	75954	171729	56047	303730	2192586
	Ágúst	80109	177319	56028	313455	2506041
	September	89230	177596	57154	323979	2830020
	Október	87726	167560	55304	310591	3140611
	Nóvember	85646	162797	53400	301843	3442454
	Desember	82593	168879	51246	302718	3745172
Samtals		1016935	2074528	653709	3745172	
2009	Janúar	80503	158590	50424	289516	289516
	Febrúar	83351	163205	52600	299156	588672
	Mars	85724	166222	54248	306195	894867
	Apríl	80679	162657	53760	297097	1191963
	Mái	82697	170727	56219	309644	1501607
	Júní	79069	171446	57050	307565	1809172
	Júlí	72919	162748	55853	291519	2100692
	Ágúst	78275	171799	56003	306077	2406769
	September	85111	175044	55637	315792	2722561
	Október	83244	166638	53399	303281	3025842
	Nóvember	83586	167322	53471	304378	3330220
	Desember	82028	173748	52397	308173	3638393
Samtals		977188	2010145	651060	3638393	
2010	Janúar	77926	154783	49075	281784	281784
	Febrúar	81110	159856	51503	292469	574253
	Mars	85057	168312	53642	307012	881264
	Apríl	77477	155785	50867	284129	1165394
	Mái	84514	176212	58511	319238	1484631
	Júní	77783	169707	56717	304207	1788838
	Júlí	70444	154579	54046	279069	2067907
	Ágúst	78798	166581	56246	301625	2369533
	September	84311	169832	55284	309427	2678960
	Október	83176	167583	54989	305747	2984707
	Nóvember	82344	167598	53430	303371	3288078
	Desember	0	0	0	0	3288078
Samtals		882941	1810828	594310	3288078	
---- Mismunur ----						
					Vegkaflar	
					Samtals	
		40-03	41-12	49-01	Mánaða	Árs
Mismunur milli ára 2005 og 2006						
	2,77% 7,10% 6,91% 6,91% 6,91%					
	2,77% 6,40% 8,72% 8,72% 7,83%					
	8,23% 8,12% 9,91% 9,91% 8,55%					
	-2,79% -0,13% -2,15% -2,15% 5,71%					
	4,46% 3,05% 3,85% 3,85% 5,31%					
	0,87% 0,95% 0,66% 0,66% 4,50%					
	3,46% 1,71% 2,50% 2,50% 4,21%					
	0,79% 2,67% 2,95% 2,95% 4,05%					
	3,64% 5,58% 2,58% 2,58% 3,88%					
	9,14% 8,20% 8,08% 8,08% 4,30%					
	9,00% 9,46% 5,04% 5,04% 4,37%					
5,85% 5,80% 2,58% 2,58% 4,21%						
		4,04%	4,13%	4,81%	4,21%	4,21%
Mismunur milli ára 2006 og 2007						
	7,05% 9,28% 4,91% 4,91% 4,91%					
	4,23% 9,05% 3,91% 3,91% 4,39%					
	5,08% 8,80% 5,36% 5,36% 4,73%					
	7,14% 12,81% 7,75% 7,75% 5,47%					
	4,18% 12,41% 5,84% 5,84% 5,55%					
	8,32% 16,07% 9,57% 9,57% 6,23%					
	10,48% 16,02% 11,30% 11,30% 6,93%					
	10,81% 15,09% 10,33% 10,33% 7,36%					
	4,17% 12,22% 9,86% 9,86% 7,65%					
	5,81% 15,56% 11,10% 11,10% 8,01%					
	5,49% 12,18% 12,27% 12,27% 8,41%					
-1,37% 8,24% 6,09% 6,09% 8,21%						
		5,82%	8,20%	12,39%	8,21%	8,21%
Mismunur milli ára 2007 og 2008						
	3,47% 9,34% 8,75% 8,75% 8,75%					
	-1,00% 6,60% 6,17% 6,17% 7,42%					
	-3,47% 2,88% 0,95% 0,95% 5,16%					
	10,16% 11,56% 12,71% 12,71% 7,05%					
	-0,87% 3,24% 4,73% 4,73% 6,56%					
	-5,36% -0,58% 0,31% 0,31% 5,47%					
	-4,43% 0,73% 1,05% 1,05% 4,84%					
	-7,47% 0,21% -0,72% -0,72% 4,11%					
	-0,32% 3,19% 0,76% 0,76% 3,71%					
	-4,21% -0,96% -5,22% -5,22% 2,76%					
	-6,53% -2,33% -8,39% -8,39% 1,67%					
-2,05% 1,33% -2,90% -2,90% 1,29%						
		-1,92%	2,47%	2,74%	1,29%	1,29%
Mismunur milli ára 2008 og 2009						
	-4,82% 1,40% -3,61% -3,61% -3,61%					
	-1,76% 0,54% -3,49% -3,49% -3,55%					
	-1,19% 3,33% -0,93% -0,93% -2,67%					
	-11,40% -5,25% -10,00% -10,00% -4,60%					
	-5,20% -1,02% -5,02% -5,02% -4,69%					
	-2,63% 1,07% -1,85% -1,85% -4,22%					
	-4,00% -0,35% -4,02% -4,02% -4,19%					
	-2,29% -0,04% -2,35% -2,35% -3,96%					
	-4,62% -2,65% -2,53% -2,53% -3,80%					
	-5,11% -3,45% -2,35% -2,35% -3,65%					
	-2,41% 0,13% 0,84% 0,84% -3,26%					
-0,68% 2,25% 1,80% 1,80% -2,85%						
		-3,91%	-3,10%	-0,41%	-2,85%	-2,85%
Mismunur milli ára 2009 og 2010						
	-3,20% -2,67% -2,67% -2,67% -2,67%					
	-2,69% -2,09% -2,24% -2,24% -2,45%					
	-0,78% -1,12% 0,27% 0,27% -1,52%					
	-3,97% -5,38% -4,36% -4,36% -2,23%					
	2,20% 4,08% 3,10% 3,10% -1,13%					
	-1,63% -0,58% -1,09% -1,09% -1,12%					
	-3,39% -3,24% -4,27% -4,27% -1,56%					
	0,67% 0,43% -1,45% -1,45% -1,55%					
	-0,94% -0,63% -2,02% -2,02% -1,60%					
	-0,08% 2,98% 0,81% 0,81% -1,36%					
	-1,49% -0,08% -0,33% -0,33% -1,27%					

Samanlagður meðalakstur á dag í hverjum mánuði fyrir vegkafla 40-03, 41-12 og 49-01



Uppsafnaður meðalakstur á dag í hverjum mánuði fyrir vegkafla 40-03, 41-12 og 49-01



Þróun samanlagðs meðalaksturs á dag

km

4150000
3950000
3750000
3550000
3350000
3150000
2950000
2750000

2005 2006 2007 2008 2009 2010

■ Það sem af er ári

◆ Árið í heild

Skýringar
Rauða línan sýnir þróun frá áramótum til og með síðasta

