

Tafla 1. Sýnin samanlagða meðalumerð og akstur allra talingastaða eftir mánuðum.

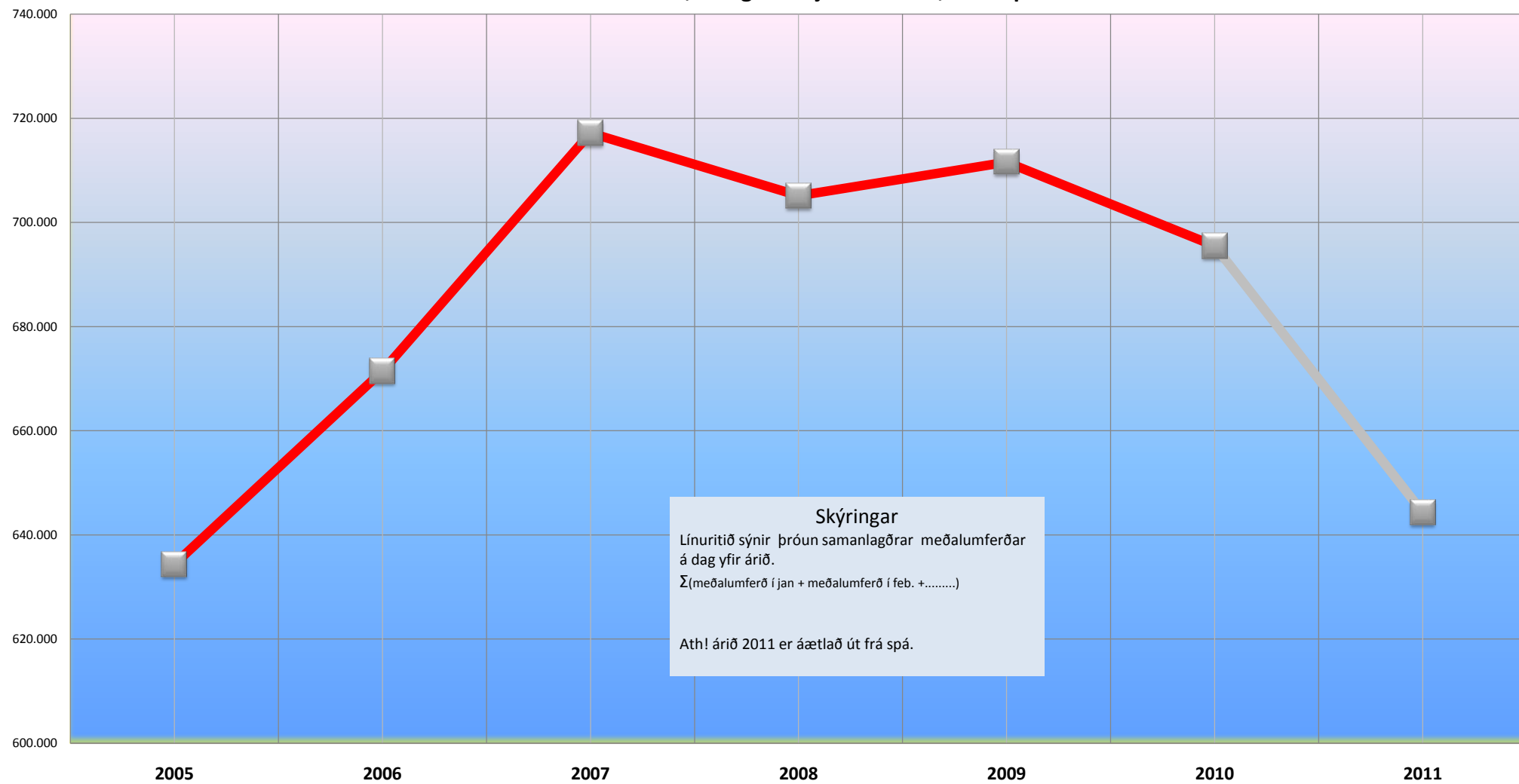
		Nöfn talingastaða																					Umferð samtals		Akstur samtals						
		Suðurland				Höfuðborgarsvæðið				Vesturland				Norðurland					Austurland												
		Hringvegur á Myrdalssandi	Hringvegur vestan Þrosastar	Hringvegur á Heiðabí	Hringvegur í Heiðarásir álf 2010	Hringvegur á Geimlali	Hringvegur við Úlfarsdal	Hringvegur í Heiðarásir álf 2010	Hringvegur í Heiðarásir álf 2010	Hringvegur í Heiðarásir álf 2010	Hringvegur í Heiðarásir álf 2010	Hringvegur í Heiðarásir álf 2010	Hringvegur í Heiðarásir álf 2010	Hringvegur í Heiðarásir álf 2010	Hringvegur í Heiðarásir álf 2010	Hringvegur í Heiðarásir álf 2010	Hringvegur í Heiðarásir álf 2010	Hringvegur í Heiðarásir álf 2010	Hringvegur í Heiðarásir álf 2010	Hringvegur í Heiðarásir álf 2010	Hringvegur í Heiðarásir álf 2010	Hringvegur í Heiðarásir álf 2010	Hringvegur í Heiðarásir álf 2010	Hringvegur í Heiðarásir álf 2010	Hringvegur í Heiðarásir álf 2010	Hringvegur í Heiðarásir álf 2010	Hringvegur í Heiðarásir álf 2010	Hringvegur í Heiðarásir álf 2010	Hringvegur í Heiðarásir álf 2010	Hringvegur í Heiðarásir álf 2010	
Lengd vegkíla í km	Ar	1-0b	1-2c	1-0b	3-3%	1-2e	1-3	3-3%	1-4f	1-4g	1-1j	1-1k	1-1l	1-1m	1-1n	1-1o	1-1p	1-1q	1-1r	1-1s	1-1t	1-1u	1-1v	1-1w	1-1x	1-1y	1-1z	1-1aa	1-1ab	1-1ac	
2005	Janúar	116	1039	3509	4664	5658	17717	23375	2931	1839	586	5356	514	463	1687	166	87	2917	91	132	91	314	36626	235757							
	Febrúar	153	1229	4318	5700	6591	19150	25741	3410	2254	766	6430	635	587	2098	200	119	3639	119	140	131	480	360	41870	275261						
	Mars	243	1485	5097	6925	8068	20319	29377	4212	3022	1136	982	926	2533	324	168	4912	167	183	135	485	48970	329723								
	Apríl	211	1519	5511	7241	8125	19928	28053	4172	2881	1034	8087	867	771	2523	276	170	4607	170	171	131	472	48480	328888							
	Mai	365	1932	6871	9168	10242	21846	32088	5017	3672	1220	9099	1030	883	2915	338	220	5386	211	253	189	653	57204	394704							
	Júní	546	2412	7967	10925	11535	23277	34812	6080	4772	1740	12592	1599	1357	3474	640	435	7505	365	378	334	1077	69911	475888							
	Júlí	1021	5182	9112	13325	12585	22295	35380	7012	5775	2276	15063	2193	1842	4249	1067	719	10070	626	601	498	1335	75873	560962							
	Ágúst	758	2484	7621	10863	10953	22107	32960	6206	4877	1891	12974	1843	1519	3774	823	686	8645	516	467	442	1425	69687	483179							
	Septembar	398	1834	6394	8626	9460	21152	30612	4976	3497	1175	9648	1025	814	2636	328	282	5085	219	270	192	681	54652	376856							
	Óktóber	259	1503	5447	7209	8134	19804	27938	4295	2853	886	8034	729	615	2211	220	143	3918	143	200	131	480	47579	320995							
	Novembar	211	1330	4834	6475	7225	18827	27052	4208	2821	853	7982	689	621	2150	201	132	3793	131	173	119	423	45725	305595							
	Desember	174	1232	4625	6311	6839	18442	26081	3953	2811	766	7430	621	573	2156	181	120	3700	128	134	102	364	43708	290124							
Samtals		4455	21191	71407	97053	105105	247565	352670	56472	41184	14319	111975	12707	10870	32445	4774	3280	64077	2887	3109	2574	8570	63434	4376935							
2006	Janúar	152	1125	4240	5517	6750	18219	24969	3595	2381	705	6681	575	513	2079	180	109	3456	116	137	86	339	40962	285932							
	Febrúar	195	1295	5077	6567	7695	19756	27451	4103	2764	775	7642	663	570	2295	210	129	3867	137	162	102	401	45928	305733							
	Mars	208	1368	5477	7053	8379	20980	29345	4398	2939	872	8209	733	638	2293	243	136	4043	142	147	105	394	49844	327341							
	Apríl	345	1897	6623	8655	9680	20536	30216	4944	3609	1235	9788	1021	802	2580	276	168	4847	176	151	168	495	54001	373964							
	Mai	392	1845	6931	9168	9982	22556	32538	5052	3674	1059	9785	884	740	2581	322	208	4735	207	239	184	630	56656	391017							
	Júní	613	2446	8344	11403	12002	24061	36063	6568	5292	1978	13838	1787	1460	3596	680	451	7974	411	391	332	1134	70412	503448							
	Júlí	925	3004	9131	13060	12570	23774	36344	7292	6188	2369	15847	2253	1935	4335	1098	774	10395	662	595	591	1848	77484	571498							
	Ágúst	898	2786	8427	12091	11826	22837	34463	6927	5469	2153	14269	2131	1821	4331	1007	711	10001	617	522	567	1708	72530	531763							
	Septembar	430	1931	7255	9616	10620	22126	32746	5521	4122	1261	10904	1123	925	2960	452	292	5752	275	302	227	604	59822	417201							
	Óktóber	305	1682	6304	8291	8710	21687	30407	4892	3469	1009	9370	863	716	2569	283	176	4607	174	213	156	543	53218	364314							
	Novembar	217	1302	5150	6669	7948	19720	27668	4146	2814	781	7741	635	582	2103	202	121	3643	124	170	117	411	46132	307486							
	Desember	184	1293	4881	6315	7203	18702	26935	4167	2890	781	7638	644	600	2221	126	88	3813	130	151	102	368	45037	299338							
Samtals		4874	21701	77840	104405	113365	255750	369115	61305	45429	14978	127172	13312	11302	33943	5175	3401	67133	3171	3164	2736	9071	61436	4661893							
2007	Janúar	162	1134	4688	5984	6933	19138	26071	3893	2569	729	7191	594	529	1997	196	117	3433	123	132	98	353	43032	285247							
	Febrúar	190	1303	5481	6974	8004	21011	29015	4470	2897	875	8242	715	642	2387	233	140	4117	122	155	100	377	48725	325697							
	Mars	221	1365	5398	6984	8218	21142	29360	4565	2953	910	8368	745	673	2425	269	145	4257	166	138	122	426	49395	329409							
	Apríl	346	1811	6923	9080	10136	22222	32358	5524	3866	1372	10822	1153	964	2974	344	212	5647	210	232	166	589	58506	404305							
	Mai	458	2108	7576	10142	11024	24298	35322	5889	4110	1241	11240	1033	886	2909	378	248	5454	240	233	198	671	62829	433264							
	Júní	652	2709	8922	12233	12892	26033	38925	7129	5480	1860	14469	1697	1443	3770	716	463	8089	419	382	364	1165	74931	532153							
	Júlí	994	3200	9841	14035	13753	26081	39834	8053	6737	2254	17044	2212	1875	4295	1080	729	10191	627	475	587	1889	82793	604872							
	Ágúst	935	2961	8989	12804	12812	25810	38016	7271	5929	2061	15261	2040	1762	4357	977	673	9609	609	455	555	1618	7598	561882							
	Septembar	422	1955	7144	9521	10680	24242	34922	5492	4261	1264	11287	1143	943	3073	407	282	5848	257	255	222	736	62312	427868							
	Óktóber	292	1689	6343	8324	9912	23577	33489	5144	3565	981	9690	832	726	2759	292	171	4780	171	193	151	515	56798	380333							
	Novembar	220	1492	5731	7443	8163	22959	32122	4897	3295	897	9089	726	642	2428	235	142	4173	140	157	118	416	53242	351820							
	Desember	167	1230	4957	7353	8051	21256	28820	4210	2966	756	7532	629	582	2339	211	121	5688	162	157	85	367	4702	308077							
Samtals		5089	22687	81989	110068	121168	271166	393204	66877	48139	15209	135919	11627	10343	33443	63666	3205	2935	2778	8919	71772	4844928									
2008	Janúar	144	1127	4305	5576	7496	20433	27929	4016	2520	713	7249	588	525	2203	179	100	3595	105												

Tafla 2. sýnir hlutfallslegan mismun á milli ára í sömu mánuðum eftir talingastaðum

Ár	Nöfn talingastaða																				Umferð samlaits	Ástur samlaits	
	Suðurland				Höfuðborgarsvæðið				Vesturland				Norðurland				Austurland						
	1-b0	1-c2	1-d8	Samlaits	1-e2	1-f3	Samlaits	1-g8	1-g4	1-j1	Samlaits	1-k7	1-p2	1-p6	1-q9	1-r4	Samlaits	1-s4	1-t5	1-v2			Samlaits
Mismunur milli ára 2005 og 2007																							
Janúar	31.03%	8.28%	20.83%	18.29%	19.30%	2.84%	6.82%	22.65%	29.47%	20.31%	24.74%	11.87%	10.80%	23.24%	8.40%	25.29%	18.48%	27.47%	3.79%	-5.49%	7.96%	11.84%	13.93%
Febrúar	27.45%	5.37%	17.58%	15.21%	16.75%	3.16%	6.64%	20.32%	22.63%	11.77%	18.85%	4.41%	-2.90%	9.39%	5.00%	8.40%	6.27%	15.13%	14.89%	2.00%	11.39%	9.69%	11.07%
Mars	-14.40%	-7.88%	-7.45%	3.33%	3.98%	3.18%	3.41%	-4.42%	-2.75%	-23.24%	-1.92%	-23.80%	-22.67%	-9.47%	-25.00%	-19.05%	-15.98%	-14.97%	-19.57%	-22.22%	-18.79%	0.36%	-0.42%
Apríl	63.51%	11.08%	20.18%	19.53%	19.14%	3.05%	7.71%	18.50%	25.27%	19.44%	21.03%	17.76%	3.98%	2.26%	0.00%	-1.18%	5.20%	3.53%	-11.70%	28.24%	4.87%	11.43%	13.11%
Mai	7.40%	-4.50%	0.01%	0.00%	-2.54%	3.25%	1.40%	0.70%	0.05%	-13.20%	-1.25%	-14.17%	-16.19%	-11.46%	-4.73%	-5.45%	-12.09%	-1.90%	-14.70%	-19.63%	-3.52%	-0.61%	-0.93%
Júní	12.27%	1.41%	4.73%	4.37%	4.05%	3.37%	3.59%	8.03%	10.90%	13.68%	9.90%	11.76%	7.59%	3.51%	6.25%	3.67%	6.25%	12.60%	3.44%	-0.60%	5.29%	5.23%	5.79%
Júlí	-9.40%	-5.89%	0.21%	-1.99%	-0.12%	3.39%	2.15%	3.98%	7.12%	4.09%	5.20%	2.74%	5.05%	2.02%	2.91%	7.65%	3.23%	5.75%	-1.20%	-2.80%	0.71%	2.14%	1.88%
Ágúst	18.47%	11.35%	10.99%	11.30%	8.97%	2.40%	4.56%	6.78%	12.55%	13.98%	9.98%	15.63%	19.88%	14.76%	22.38%	3.67%	15.68%	19.57%	11.78%	28.28%	19.72%	8.47%	10.08%
September	8.04%	5.29%	13.47%	11.48%	12.28%	4.60%	6.97%	10.85%	17.87%	7.32%	13.02%	9.66%	13.64%	12.29%	37.95%	3.67%	13.12%	26.37%	11.85%	18.23%	18.08%	9.46%	10.71%
Oktober	17.76%	11.91%	15.73%	15.01%	7.08%	9.56%	8.84%	13.90%	21.59%	13.88%	16.83%	18.38%	16.42%	16.19%	28.64%	23.08%	17.59%	21.27%	3.40%	19.08%	13.01%	11.85%	13.50%
November	2.84%	-2.11%	4.37%	2.99%	10.01%	-0.54%	2.28%	-1.47%	-3.66%	-8.44%	-3.02%	-7.84%	-6.28%	-2.19%	0.50%	-8.33%	-3.95%	-5.34%	-1.71%	-1.68%	-2.84%	0.89%	0.62%
Desember	5.75%	1.46%	5.54%	4.71%	9.50%	1.34%	3.16%	5.41%	-1.64%	-3.31%	1.43%	3.70%	4.71%	1.18%	16.23%	5.00%	3.05%	1.20%	0.75%	-0.98%	0.42%	3.04%	3.1%
Samlaits	9.18%	2.41%	9.01%	7.58%	7.89%	3.31%	4.66%	8.56%	10.31%	8.60%	8.70%	4.78%	3.37%	4.62%	8.40%	3.67%	4.77%	9.84%	1.77%	6.46%	5.85%	9.85%	6.51%
Mismunur milli ára 2006 og 2007																							
Janúar	6.58%	0.80%	10.57%	8.46%	2.71%	5.04%	4.41%	8.29%	7.90%	3.40%	7.63%	3.30%	3.12%	-3.94%	8.89%	7.34%	-0.67%	6.03%	-3.65%	13.95%	4.13%	5.05%	6.20%
Febrúar	-2.56%	0.62%	7.96%	6.20%	4.02%	6.35%	5.70%	8.94%	4.81%	12.90%	7.85%	7.84%	12.63%	4.01%	10.95%	8.53%	6.46%	-11.04%	-4.32%	-2.14%	-6.06%	6.09%	6.53%
Mars	6.25%	-0.22%	-1.44%	-0.98%	-1.92%	0.84%	0.05%	3.80%	-1.57%	4.36%	1.94%	1.64%	5.49%	5.76%	10.70%	6.62%	5.29%	17.18%	-6.12%	16.11%	8.20%	0.72%	0.63%
Apríl	0.29%	7.39%	4.52%	4.91%	4.71%	8.21%	7.09%	12.84%	7.12%	11.09%	10.56%	12.93%	20.25%	15.27%	24.64%	26.19%	16.51%	19.32%	47.68%	-1.19%	21.01%	8.34%	8.11%
Mai	16.84%	14.25%	9.31%	10.92%	10.44%	7.72%	8.56%	16.57%	11.87%	17.19%	14.87%	18.86%	19.73%	12.71%	17.30%	19.23%	15.18%	15.94%	-2.51%	7.61%	6.51%	10.51%	10.80%
Júní	6.36%	10.75%	6.93%	7.72%	7.42%	8.20%	7.94%	8.54%	3.55%	-5.97%	4.56%	-5.04%	-1.16%	4.84%	5.29%	2.66%	1.44%	1.95%	-2.30%	9.64%	2.73%	6.42%	5.70%
Júlí	7.46%	6.52%	7.77%	7.47%	9.14%	9.20%	10.44%	8.91%	10.44%	-4.85%	7.65%	-1.82%	-3.10%	-0.92%	-1.64%	-5.76%	-1.92%	-2.90%	-2.01%	-0.68%	-8.80%	6.84%	5.84%
Ágúst	-4.12%	7.05%	6.66%	6.56%	8.34%	11.34%	10.31%	9.72%	8.02%	-4.27%	6.95%	-4.27%	-3.24%	0.60%	-2.98%	-5.36%	-1.92%	-1.46%	-12.84%	-2.12%	-5.16%	6.97%	5.66%
September	-1.86%	1.24%	-1.53%	-0.99%	0.60%	9.56%	6.65%	4.56%	3.13%	0.24%	3.51%	1.78%	1.35%	3.82%	-9.98%	-3.42%	1.67%	6.55%	-15.60%	-2.00%	-6.71%	-4.16%	2.58%
Oktober	-4.26%	0.42%	0.62%	0.40%	13.80%	8.66%	10.14%	5.15%	2.77%	-2.78%	3.42%	-3.59%	1.40%	7.40%	3.18%	-2.84%	3.76%	-1.72%	-9.39%	-3.21%	-5.16%	6.73%	4.40%
November	1.38%	14.59%	11.29%	11.61%	15.28%	16.42%	16.10%	18.11%	17.09%	14.85%	17.41%	14.33%	10.31%	15.45%	16.34%	17.36%	14.55%	12.90%	-0.76%	0.85%	0.97%	15.41%	14.4%
Desember	-9.24%	-1.60%	1.55%	0.61%	5.94%	7.90%	7.38%	1.03%	-4.61%	-3.20%	-1.39%	-2.33%	-3.00%	5.31%	-2.25%	-3.97%	1.97%	-3.85%	1.48%	-5.94%	-2.46%	4.40%	2.92%
Samlaits	4.01%	5.79%	5.33%	5.37%	6.87%	8.37%	7.91%	9.08%	6.01%	-4.38%	7.00%	-4.59%	3.23%	5.27%	3.27%	2.65%	3.99%	1.18%	-2.24%	1.45%	-1.68%	6.91%	6.88%
Mismunur milli ára 2007 og 2008																							
Janúar	-11.11%	-0.62%	-8.17%	-6.82%	8.12%	6.77%	7.13%	3.15%	-1.31%	-2.10%	0.81%	-1.01%	-0.76%	10.32%	-14.53%	4.72%	-14.83%	-9.05%	-14.24%	-1.46%	-3.75%	0.54%	5.4%
Febrúar	3.68%	-2.76%	-12.42%	-10.18%	-1.36%	3.32%	2.03%	-2.28%	-5.32%	-11.09%	-4.28%	-9.93%	-9.81%	-2.22%	-12.88%	-16.43%	-5.83%	-1.54%	-27.74%	-16.84%	-16.38%	-1.59%	-4.44%
Mars	23.08%	9.82%	13.54%	13.12%	18.85%	5.34%	9.12%	10.08%	15.76%	23.19%	13.47%	24.30%	20.65%	1.36%	33.14%	4.83%	10.55%	6.85%	-29.71%	-4.03%	-13.44%	10.35%	11.37%
Apríl	-25.14%	-7.73%	-7.60%	-8.29%	-0.74%	7.15%	4.68%	-7.70%	-13.19%	-24.13%	-11.74%	-25.59%	-21.58%	-8.44%	-19.19%	-26.89%	-15.53%	-24.29%	-46.19%	-30.12%	-34.06%	-2.72%	-6.01%
Mai	-16.38%	-1.94%	-0.24%	-1.32%	2.68%	2.42%	2.50%	-2.55%	-5.84%	-0.88%	-3.57%	0.00%	-0.68%	3.40%	17.72%	-2.82%	2.80%	4.17%	-14.16%	-9.09%	-9.09%	0.70%	-0.04%
Júní	-7.36%	1.48%	1.59%	1.09%	-0.57%	-2.27%	-1.70%	-4.19%	-6.64%	-9.35%	-5.78%	-7.48%	-8.25%	-7.32%	-9.36%	-11.23%	-7.92%	-11.46%	-18.59%	-12.36%	-14.08%	-2.90%	-2.80%
Júlí	-3.12%	7.84%	-6.37%	-2.09%	-2.30%	-2.23%	-4.21%	-5.37%	-0.86%	-4.23%	-1.08%	-0.85%	-0.72%	3.33%	3.33%	-0.10%	1.91%	1.68%	1.51%	-1.48%	-2.42%	-2.91%	
Ágúst	-3.96%	-1.86%	-3.36%	-3.06%	-3.39%	-0.36%	-1.38%	-0.34%	-0.98%	-5.73%	-1.32%	-4.26%	-5.90%	-3.33%	-0.61%	0.16%	-3.48%	-6.58%	-8.35%	-9.37%	-8.03%	-2.05%	-2.51%
September	-0.95%	1.13%	-5.11%	-3.64%	-2.17%	-1.06%	-1.40%	-5.23%	-7.95%	-2.56%	-6.07%	-4.99%	-6.36%	-0.16%	5.16%	0.71%	-1.69%	2.72%	-5.88%	-2.70%	-1.91%	-2.62%	-3.32%
Oktober	-3.08%	-2.01%	-10.52%	-8.53%	-14.97%	2.37%	-6.10%	-10.11%	-12.31%	-14.48%	-11.36%	-12.14%	-14.46%	-17.83%	-21.52%	-18.13%	-16.59%	-18.71%	-16.06%	-9.27%	-14.35%	-8.32%	-8.95%
November	-0.45%	-1.14%	-5.41%	-4.41%	-14.58%	-3.67%	-6.78%	-6.60%	-7.92%	-10.03%	-7.42%	-7.71%	-8.41%	-7.00%	-10.64%	-15.49%	-7.84%	-13.57%	-0.64%	-13.56%	-8.67%	-6.66%	-6.22%
Desember	-0.60%	4.88%	-4.01%	-2.20%	-9.54%	-0.01%	-2.53%	-2.04%	-0.47%	-3.17%	-1.62%	-1.75%	-3.78%	-3.93%	-2.30%	-3.31%	-3.45%	-8.00%	-27.01%	-11.58%	-13.73%	-2.50%	-2.48%
Samlaits	-5.00%	0.77%	-3.91%	-2.98%	-1.96%	0.86%	0.00%	-2.88%	-4.84%	-6.53%	-3.98%	-4.84%	-5.33%	-3.30%	-1.25%	-5.18%	-3.87%	-6.65%	-14.21%	-8.82%	-9.81%	-1.68%	-2.51%
Mismunur milli ára 2008 og 2009																							
Janúar	2.78%	12.07%	9.83%	10.10%	-2.41%	2.18%	0.95%	0.87%	1.79%	1.40%	1.24%	1.53%	3.62%	-6.35%	-1.68%	-4.00%	-3.31%	-1.80%	-29.17%	-8.33%	-14.24%	1.69%	3.27%
Febrúar	-15.23%	9.23%	8.19%	7.66%	0.29%	-0.67%	-0.41%	0.13%	2.52%	8.61%	8.07%	10.17%	10.19%	-4.76%	6.40%	-2.56%	0.70%	1.67%	-6.25%	-3.61%	-2.54%	1.08%	2.79%
Mars	-26.47%	-1.33%	-13.31%	-11.35%	-18.59%	2.39%	-4.01%	-12.46%	-15.97%	-24.71%	-15.14%	-22.35%	-18.60%	-10.86%	-31.59%	-19.08%	-16.30%	-14.84%	-4.12%	-27.35%	-15.99%	-8.15%	-10.03%
Apríl	42.47%	16.52%	4.49%	8.08%	-4.70%	-2.21%	-2.95%	4.31%	13.02%	29.51%	10.12%	32.52%	28.57%	6.17%	24.46%	30.97%	16.33%	32.70%	7.50%	48.28%	29.62%	3.12%	5.91%
Mai	14.36%	7.79%	-0.18%	2.02%	-7.90%	-2.80%	-4.39%	-0.75%	5.58%	3.59%	1.99%	6.39%	7.73%	0.30%	-2.24%	16.18%	3.07%	21.30%	-3.00%	11.67%	10.49%	-1.48%	-0.04%
Júní	23.34%	8.51%	-0.06%	2.98%	-5.49%	1.03%	-1.15%	3.97%	8.42%	10.65%	6.49%	13.95%	14.20%	7.41%	25.73%	28.22%	12.74%	26.69%	17.04%	30.09%	24.78%	2.76%	4.11%
Júlí	22.74%	11.27%	9.25%	10.71%	-2.09%	3.78%	1.75%	5.17%	7.34%	7.63%	6.36%	10.42%	9.58%	7.69%	12.63%	11.54%	9.45%	11.74%	9.04%	18.14%	12.62%	5.39%	7.28%
Ágúst	10.91%	10.67%	1.91%	4.60%	-2.78%	6.89%	3.57%	-1.74%	-0.55%	3.93%	-0.54%	7.73%	8.08%	6.10%	1								

Fjöldi bíla

Heildar meðalumferðar, á dag í hverjum mánuði, í mælipunktum.



Skýringar

Línuritið sýnir þróun samantlagðrar meðalumferðar á dag yfir árið.

$\Sigma(\text{meðalumferð í jan} + \text{meðalumferð í feb.} + \dots)$

Ath! árið 2011 er áætlað út frá spá.

Samanlögð meðalumferð, í mælipunktum, á dag.

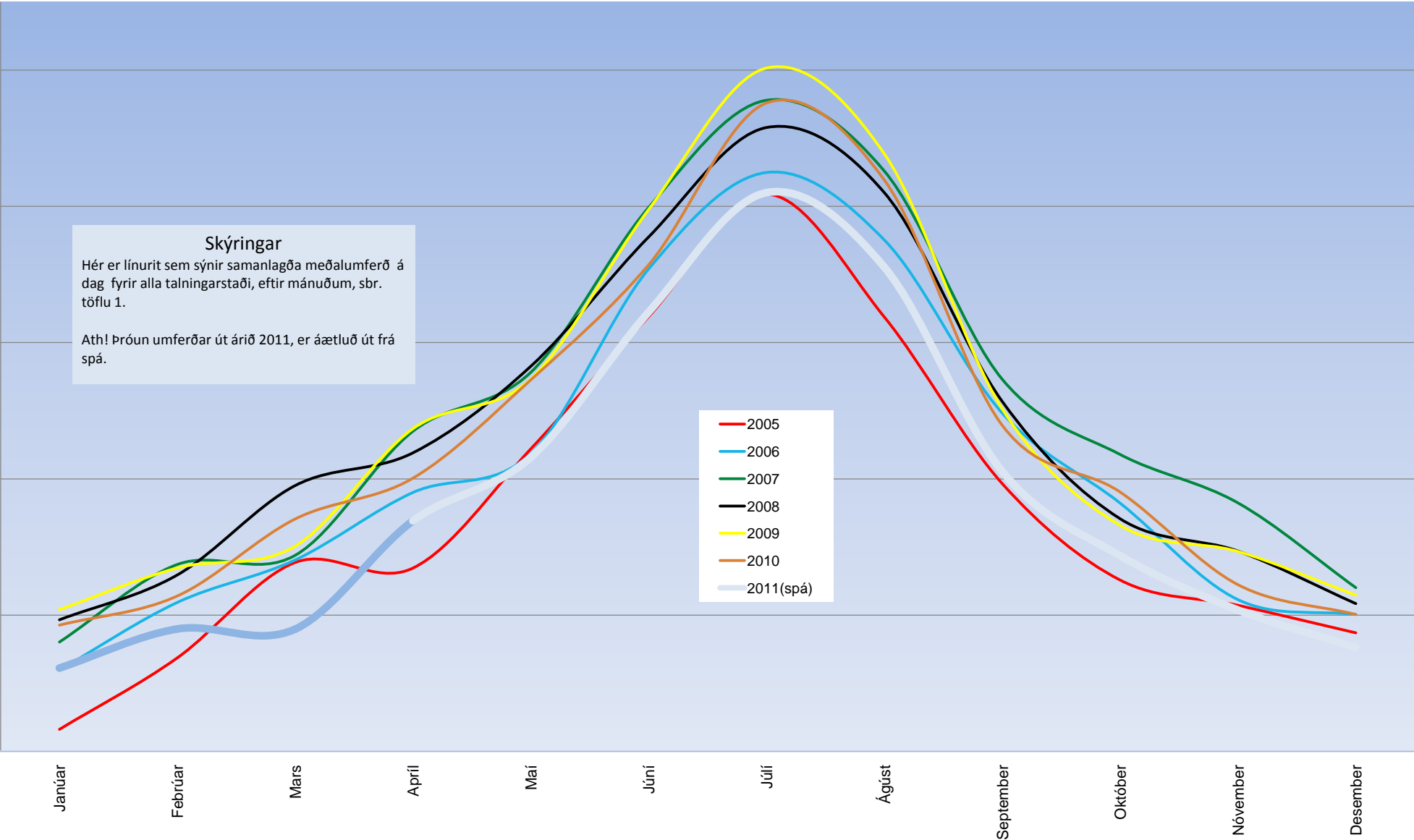
Fjöldi bíla

Skýringar

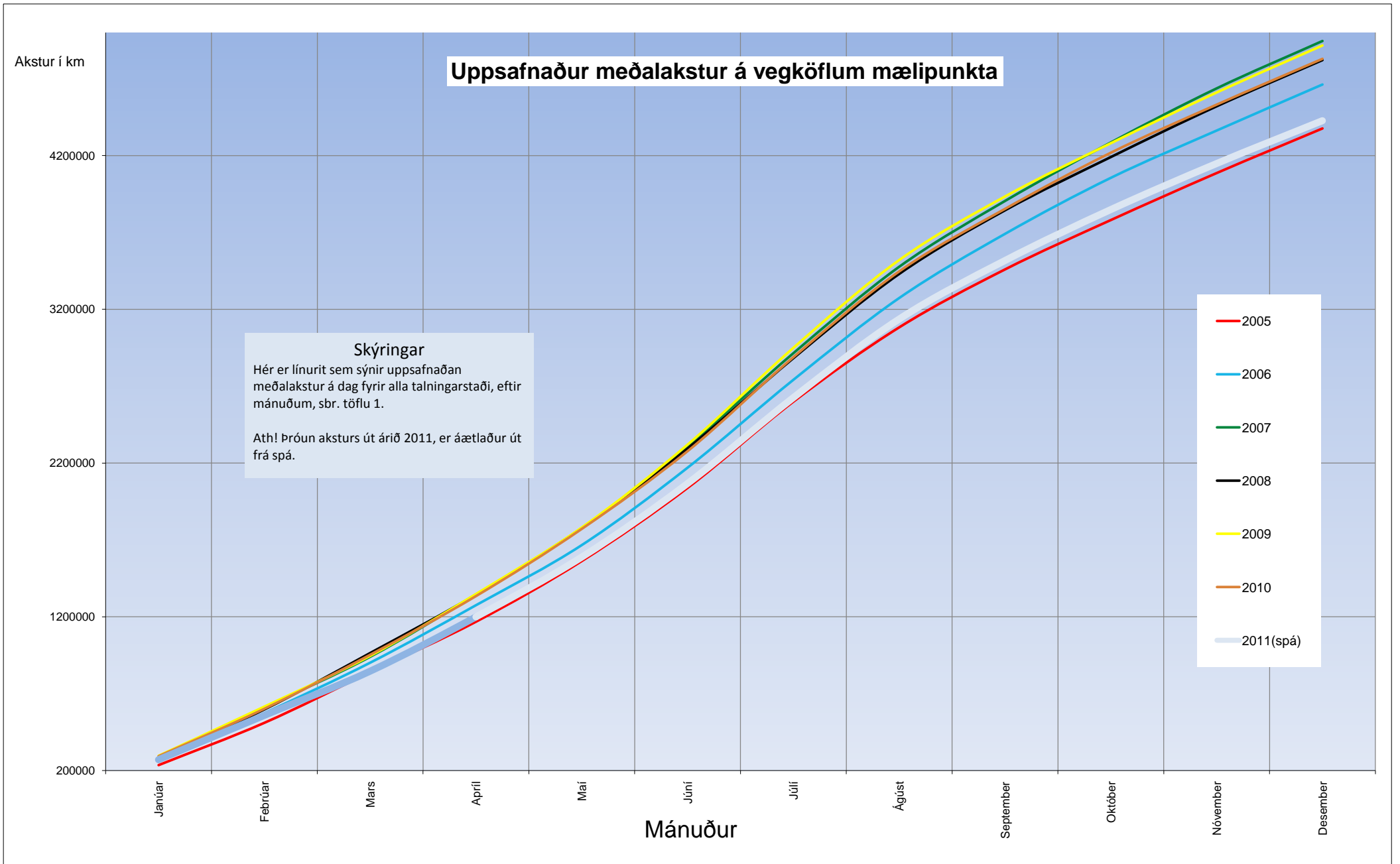
Hér er línurit sem sýnir samanlagða meðalumferð á dag fyrir alla talningarstaði, eftir mánuðum, sbr. töflu 1.

Ath! Þróun umferðar út árið 2011, er áætluð út frá spá.

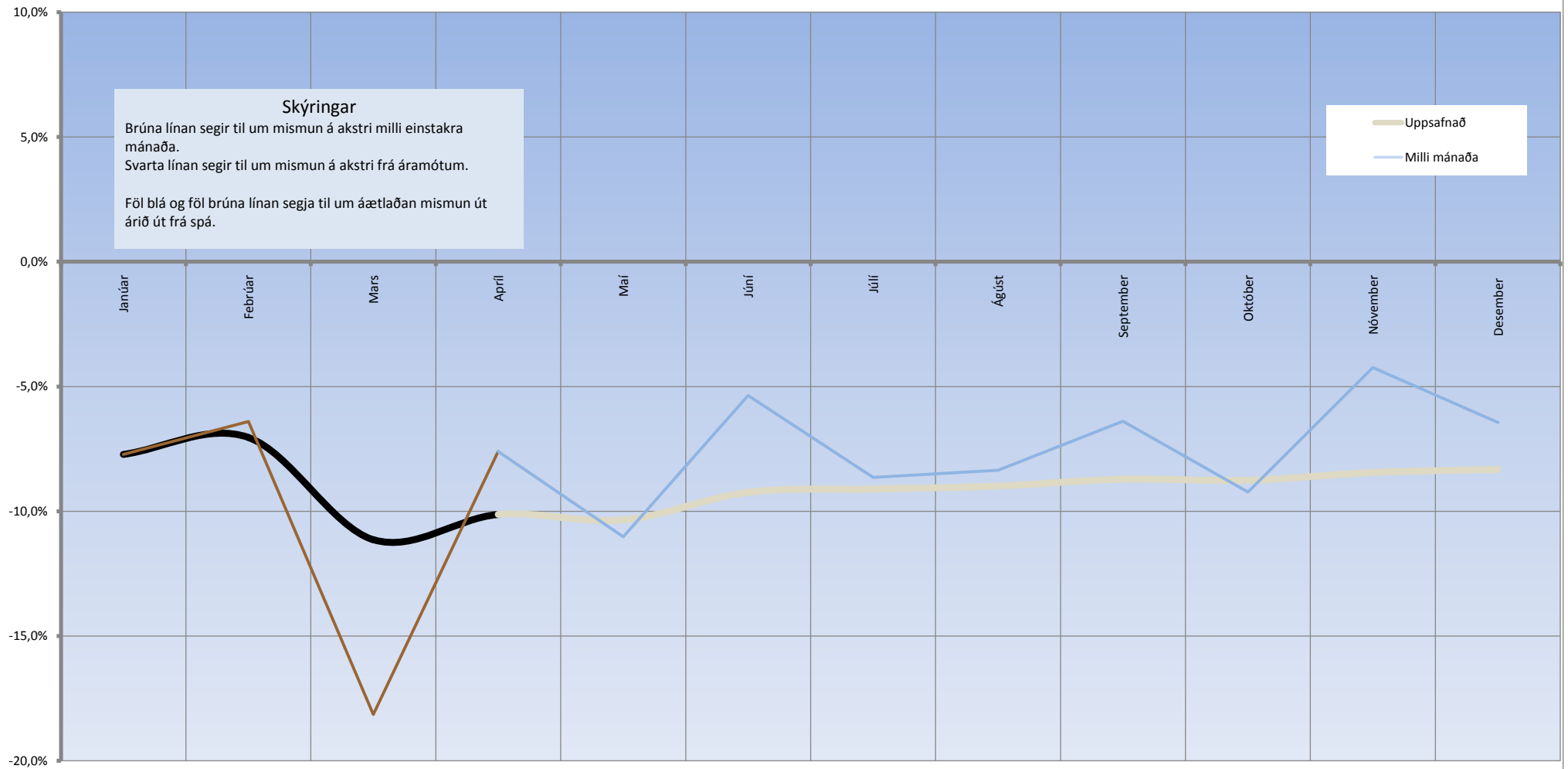
- 2005
- 2006
- 2007
- 2008
- 2009
- 2010
- 2011(spá)



Mánuður



Mismunur á akstri milli árunna 2010 og 2011



Hlutfallsleg þróun aksturs innan hvers svæðis 2010

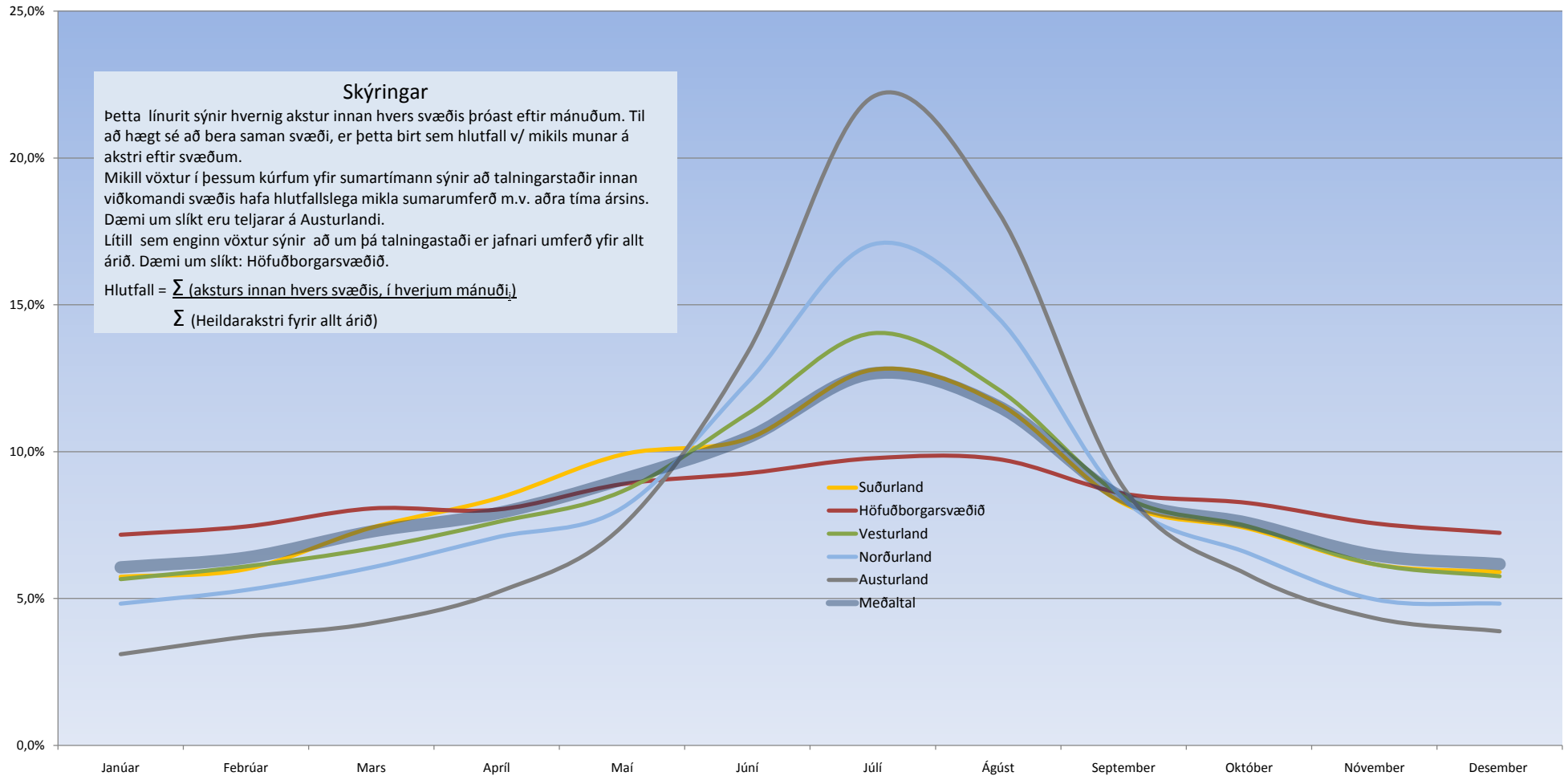
Skýringar

Þetta línurit sýnir hvernig akstur innan hvers svæðis þróast eftir mánuðum. Til að hægt sé að bera saman svæði, er þetta birt sem hlutfall v/ mikils munar á akstri eftir svæðum.

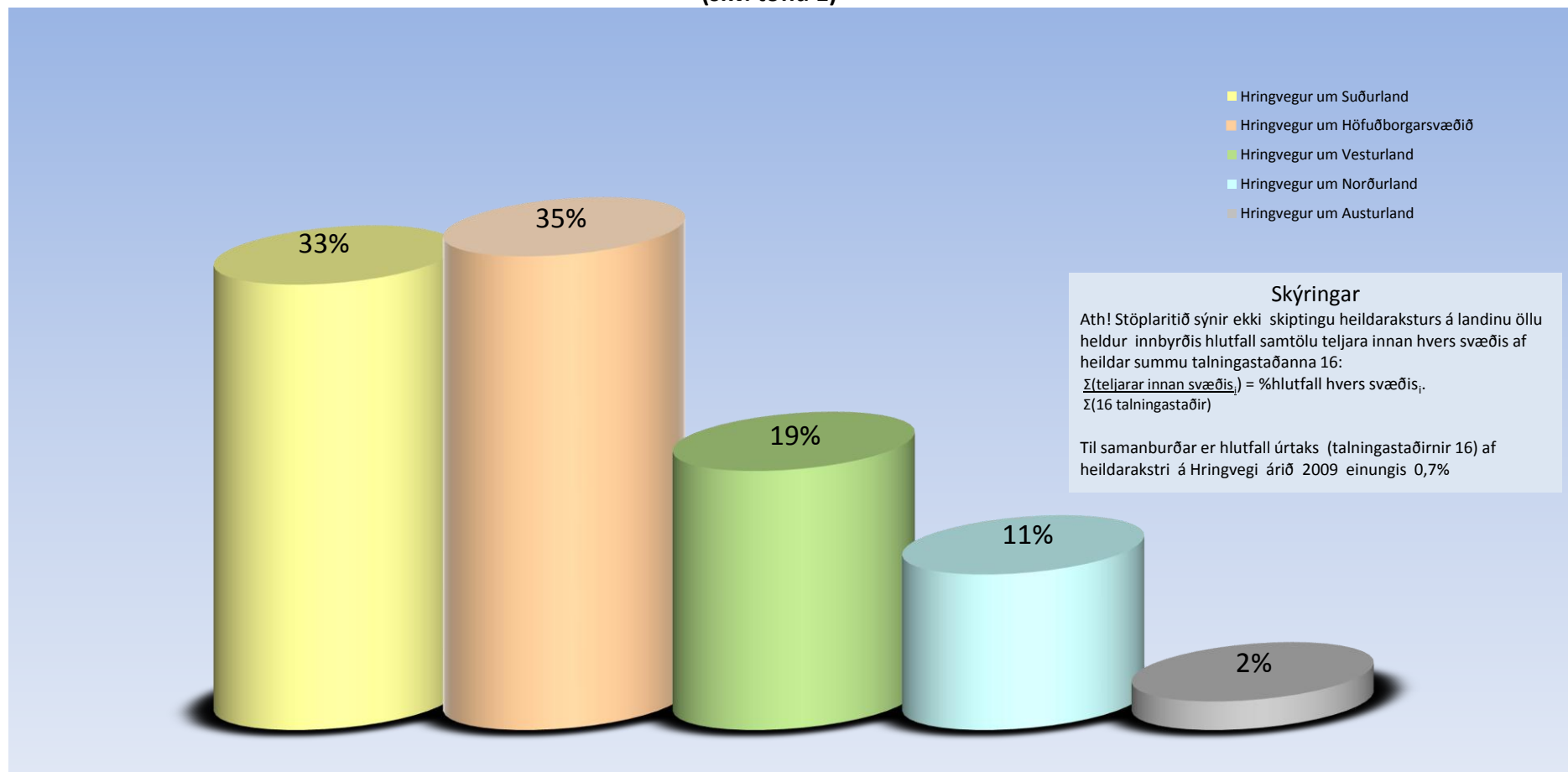
Mikill vöxtur í þessum kúrfum yfir sumartímann sýnir að talningarstaðir innan viðkomandi svæðis hafa hlutfallslega mikla sumarumferð m.v. aðra tíma ársins. Dæmi um slíkt eru teljarar á Austurlandi.

Lítill sem enginn vöxtur sýnir að um þá talningastaði er jafnari umferð yfir allt árið. Dæmi um slíkt: Höfuðborgarsvæðið.

$$\text{Hlutfall} = \frac{\sum (\text{aksturs innan hvers svæðis, í hverjum mánuði}_i)}{\sum (\text{Heildarakstri fyrir allt árið})}$$



**Innbyrðis vægi talningastaðanna 16 um svæðin árið 2010
(skv. töflu 1)**



- Hringvegur um Suðurland
- Hringvegur um Höfuðborgarsvæðið
- Hringvegur um Vesturland
- Hringvegur um Norðurland
- Hringvegur um Austurland

Skýringar

Ath! Stöplariði sýnir ekki skiptingu heildaraksturs á landinu öllu heldur innbyrðis hlutfall samtölu teljara innan hvers svæðis af heildar summu talningastaðanna 16:

$$\frac{\sum(\text{teljarar innan svæðis}_i)}{\sum(16 \text{ talningastaðir})} = \% \text{hlutfall hvers svæðis}_i$$

Til samanburðar er hlutfall úrtaks (talningastaðirnir 16) af heildarakstri á Hringvegi árið 2009 einungis 0,7%