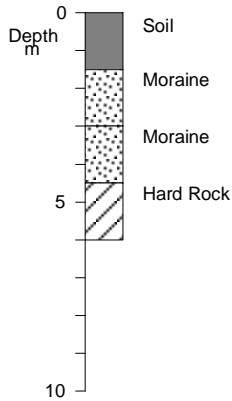


EL-01

X:732.368,6
Y:518.367,1
Elev: 17,0 m a.s.l.

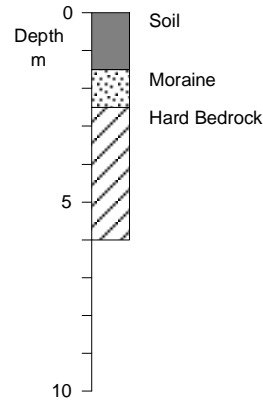
Vertical rotary percussion drilling
with 3" button bits and air flush.
Casing to 6 m depth.



EL - 02

X:732.391,3
Y:518.357,5
Elev: 15,7 m a.s.l.

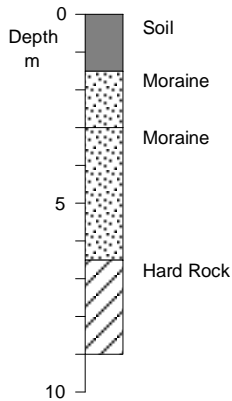
Vertical rotary percussion drilling
with 3" button bits and air flush.
Casing to 3 m depth.



EL-03

X:732.379,7
Y:518.388,7
Elev: 21,2 m a.s.l.

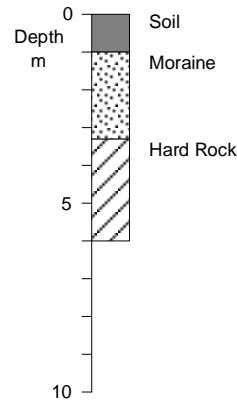
Vertical rotary percussion drilling
with 3" button bits and air flush.
Casing to 3 m depth.






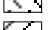
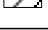
EL - 04

X:732.407,6
Y:518.382,6
Elev: 20,3 m a.s.l.

Vertical rotary percussion drilling
with 3" button bits and air flush.
Casing to 3 m depth.



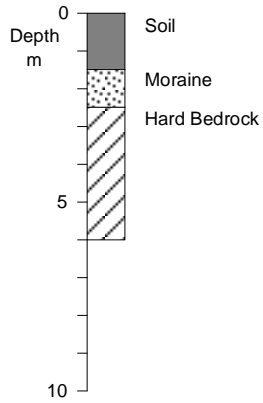
Legend

-  Soil
-  Silt
-  Gravel
-  Scoria
-  Bedrock basalt

EL-05

X:732.401,8
 Y:518.421,8
 Elev: 27,6 m a.s.l.

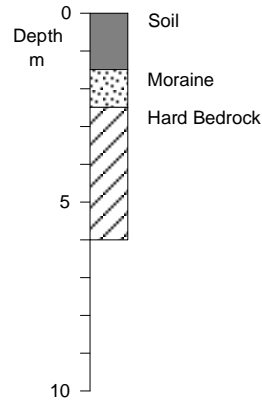
Vertical rotary percussion drilling
 with 3" button bits and air flush.
 Casing to 3 m depth.



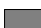


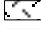

EL - 06

X:732.435,3
 Y:518.504,6
 Elev: 47,5 m a.s.l.

Vertical rotary percussion drilling
 with 3" button bits and air flush.
 Casing to 3 m depth.

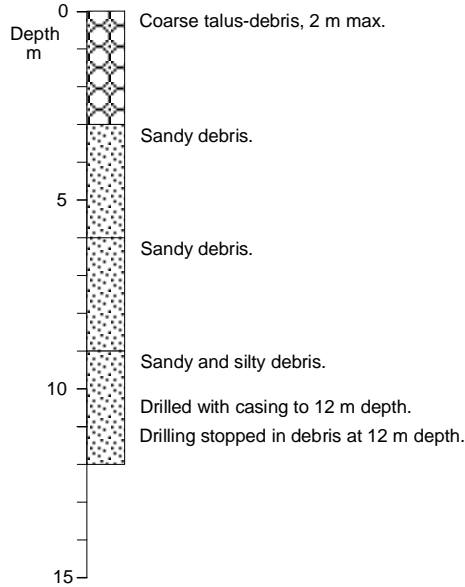


Legend

-  Soil
-  Silt
-  Gravel
-  Scoria
-  Bedrock basalt

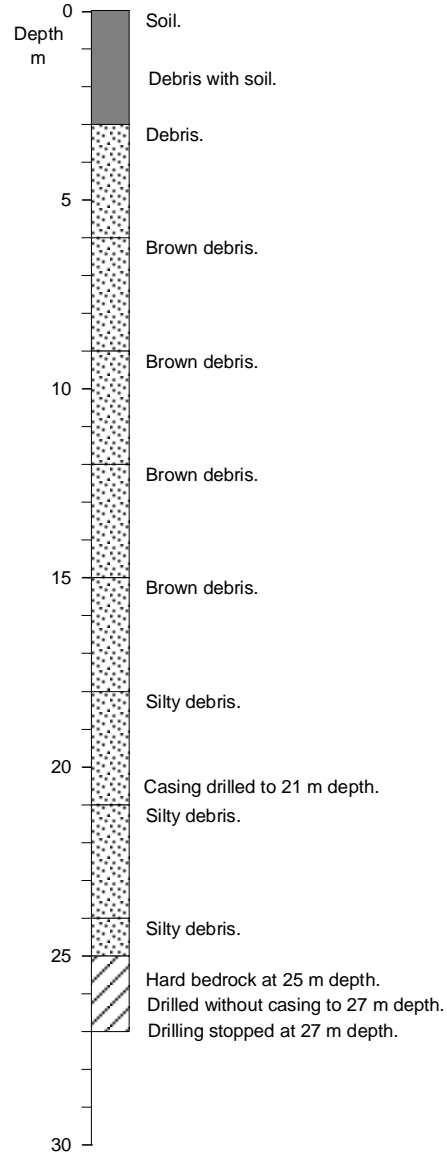
NL - 22

East: 738339,8
North: 523598,7
Elev: 106,9 m a.s.l.
Vertical rotary percussion drilling with 3" button bits and air flush. Casing to 12 m depth.



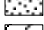
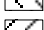
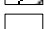


NL - 23

East: 738307,8
North: 523516,7
Elev: 121,1 m a.s.l.
Vertical rotary percussion drilling with 3" button bits and air flush. Casing to 21 m depth.

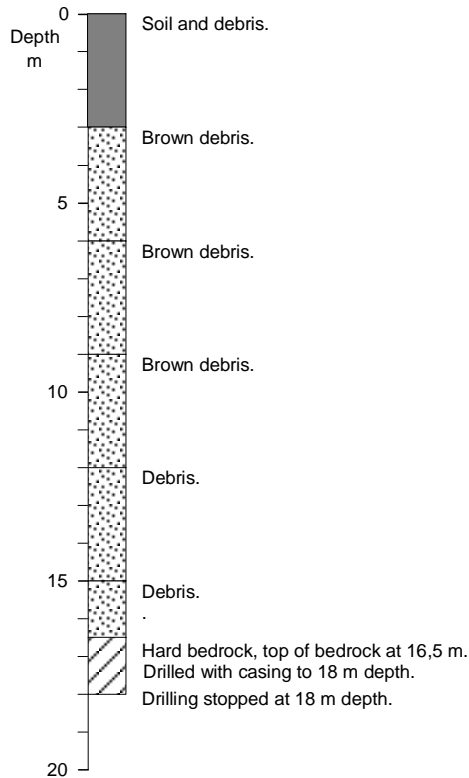


Legend

-  Soil
-  Silt
-  Gravel
-  Scoria
-  Bedrock basalt

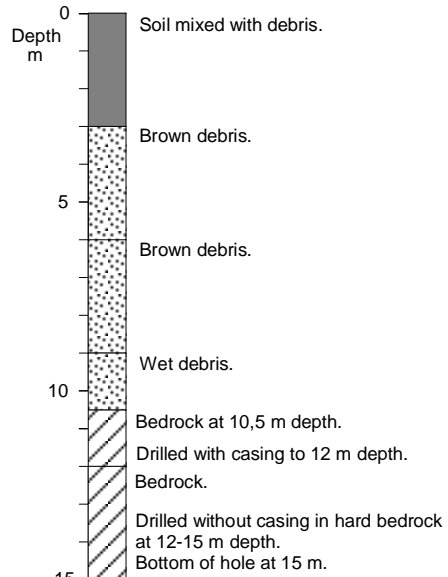
NL - 24

East: 738008,1 North: 523549,9 Elev: 136,9 m a.s.l.
Vertical rotary percussion drilling with 3" button bits and air flush. Casing to 18 m depth.



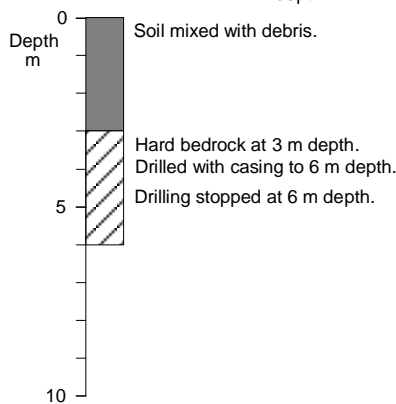
NL - 25

East: 738248,5 North: 523400,4 Elev: 149,8 m a.s.l.
Vertical rotary percussion drilling with 3" button bits and air flush. Casing to 12 m depth.



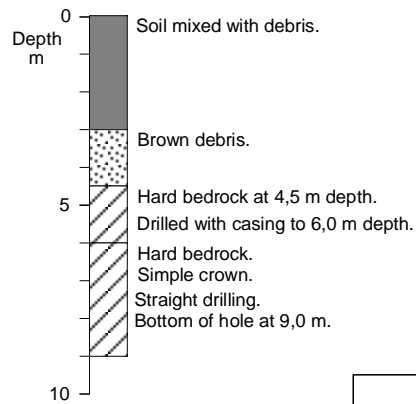
NL - 26

East: 738232,8 North: 523336,0 Elev: 167,9 m a.s.l.
Vertical rotary percussion drilling with 3" button bits and air flush. Casing to 6 m depth.



NL - 27

East: 738163,8 North: 523375,3 Elev: 163,4 m a.s.l.
Vertical rotary percussion drilling with 3" button bits and air flush. Casing to 6 m depth.



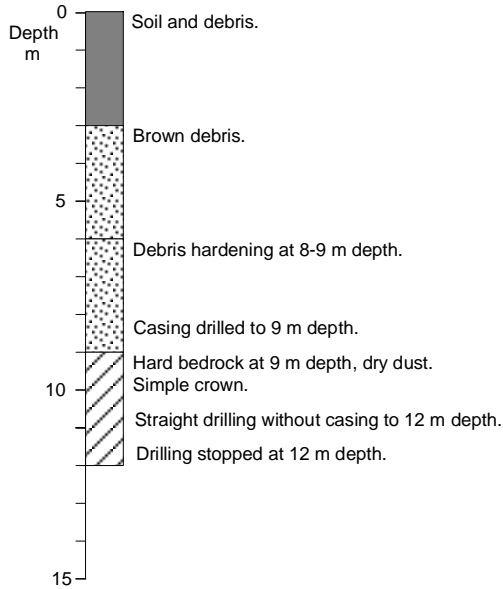
Legend

- Soil
- Silt
- Gravel
- Scoria
- Bedrock basalt
-

NL - 28

East: 738174,4
North: 523427,3
Elev: 148,4 m a.s.l.

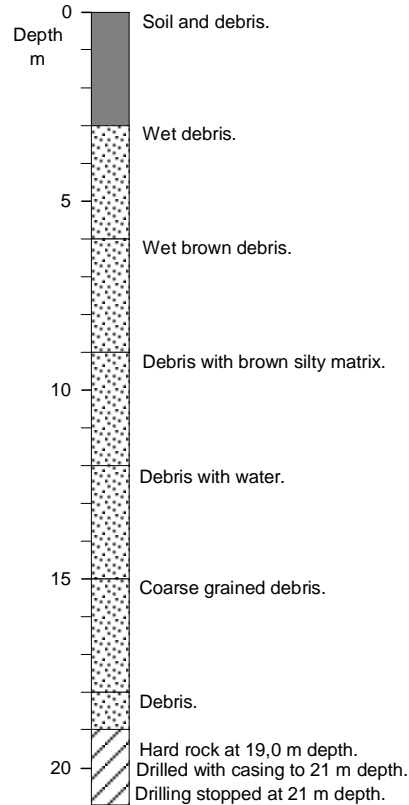
Vertical rotary percussion drilling
with 3" button bits and air flush.
Casing to 9 m depth.



NL - 29

East: 738195,0
North: 523481,0
Elev: 136,4 m a.s.l.

Vertical rotary percussion drilling
with 3" button bits and air flush.
Casing to 21 m depth.



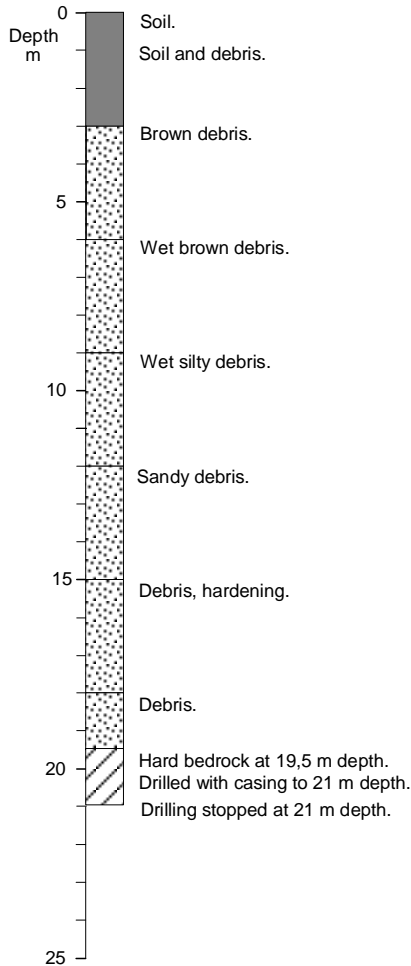
Legend

- Soil
- Silt
- Gravel
- Scoria
- Bedrock basalt

NL - 30

East: 738205,8
North: 523534,6
Elev: 126,7 m a.s.l.

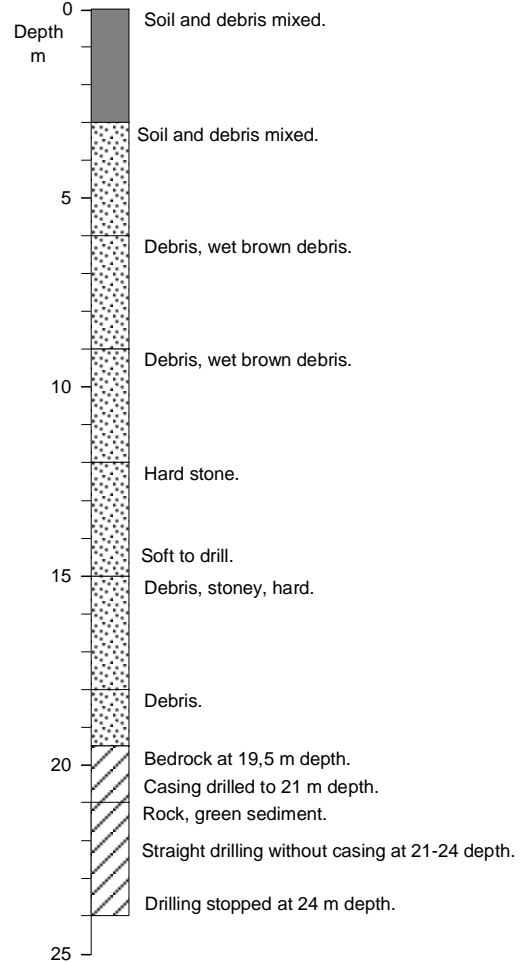
Vertical rotary percussion drilling
with 3" button bits and air flush.
Casing to 21 m depth.






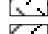
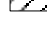
NL - 31

East: 738107,3
North: 523547,9
Elev: 130,1 m a.s.l.

Vertical rotary percussion drilling
with 3" button bits and air flush.
Casing to 21 m depth.

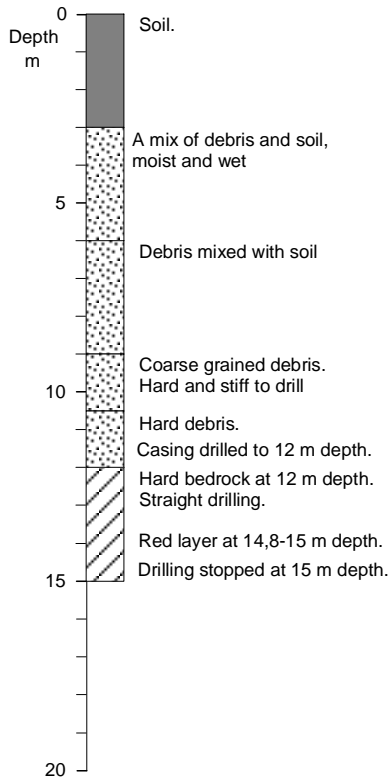


Legend

-  Soil
-  Silt
-  Gravel
-  Scoria
-  Bedrock basalt

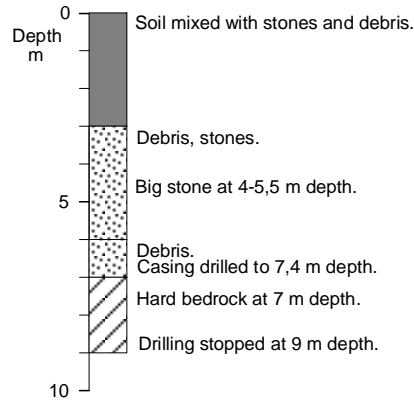
NL - 32

East: 738096,2 North: 523483,9 Elev: 143,8 m a.s.l.
Vertical rotary percussion drilling with 3" button bits and air flush. Casing to 12 m depth.



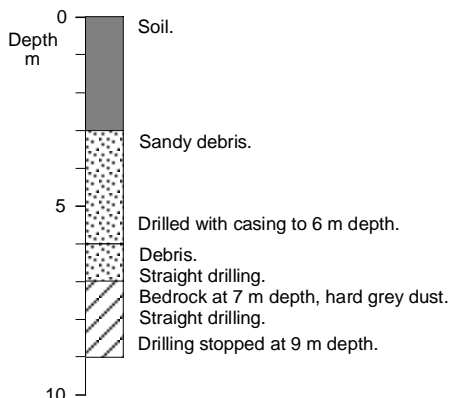
NL - 33

East: 738071,8 North: 523415,4 Elev: 162,1 m a.s.l.
Vertical rotary percussion drilling with 3" button bits and air flush. Casing to 7,4 m depth.



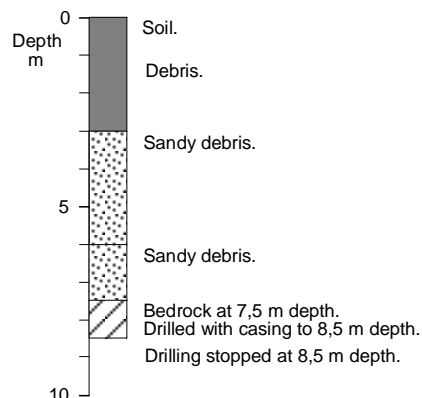
NL - 34

East: 738029,2 North: 523478,4 Elev: 147,1 m a.s.l.
Vertical rotary percussion drilling with 3" button bits and air flush. Casing to 6 m depth.



NL - 35

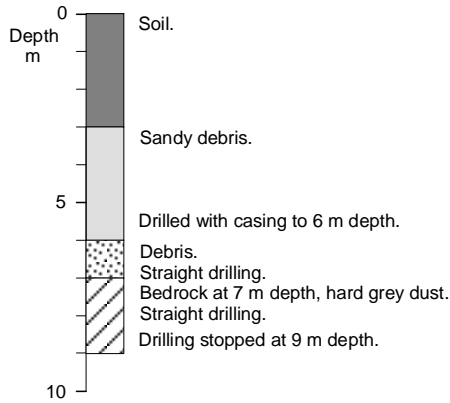
East: 737985,5 North: 523503,5 Elev: 144,6 m a.s.l.
Vertical rotary percussion drilling with 3" button bits and air flush. Casing to 8,5 m depth.



Legend	
	Soil
	Silt
	Gravel
	Scoria
	Bedrock basalt

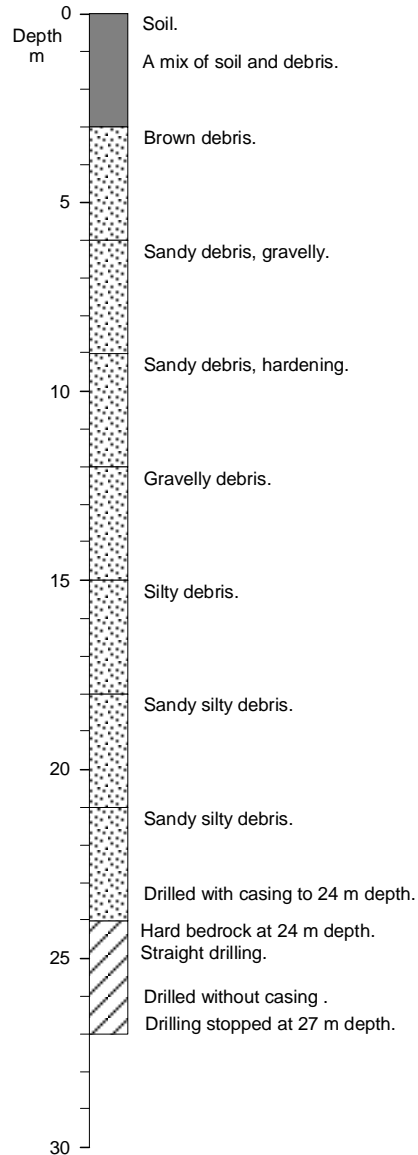
NL - 36

East: 737947,8 North: 523537,5 Elev: 147,7 m a.s.l.
Vertical rotary percussion drilling with 3" button bits and air flush. Casing to 6 m depth.



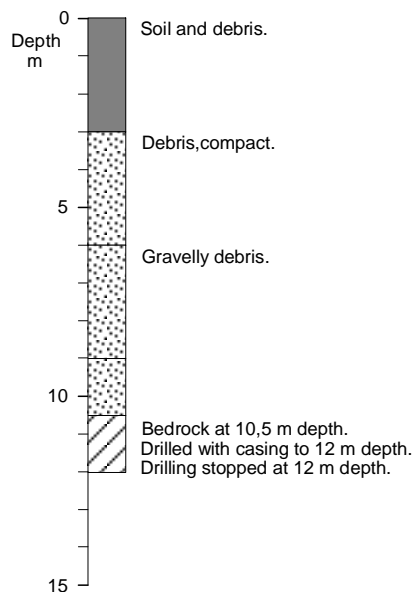
NL - 37

East: 73742,5 North: 523690 Elev: 150,5 m a.s.l.
Vertical rotary percussion drilling with 3" button bits and air flush. Casing to 24 m depth.



NL - 38

East: 737398,2 North: 523565,5 Elev: 178,6 m a.s.l.
Vertical rotary percussion drilling with 3" button bits and air flush. Casing to 12 m depth.

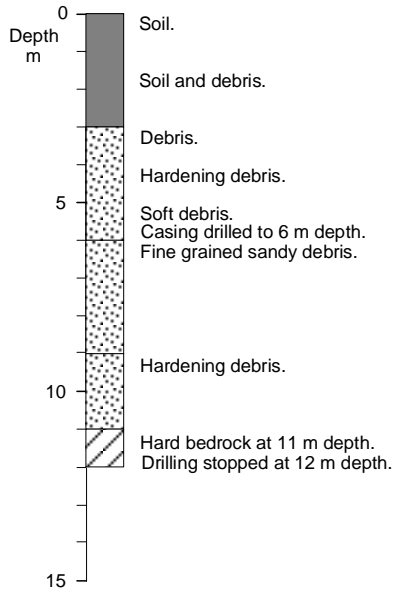


Legend

- Soil
- Silt
- Gravel
- Scoria
- Bedrock basalt

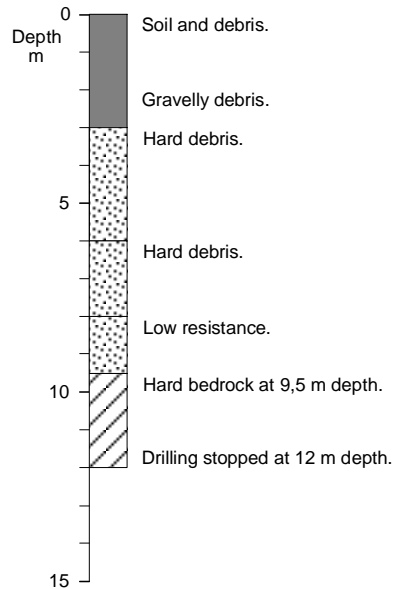
NL - 39

East: 737393,8 North: 523506,1 Elev: 194,7 m a.s.l.
Vertical rotary percussion drilling with 3" button bits and air flush. Casing to 6 m depth.



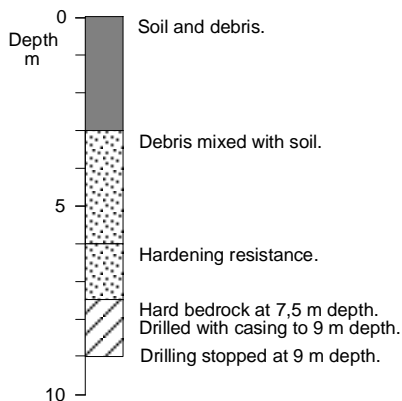
NL - 40

East: 737939,4 North: 523457,6 Elev: 164,2 m a.s.l.
Vertical rotary percussion drilling with 3" button bits and air flush. Casing to 12 m depth.



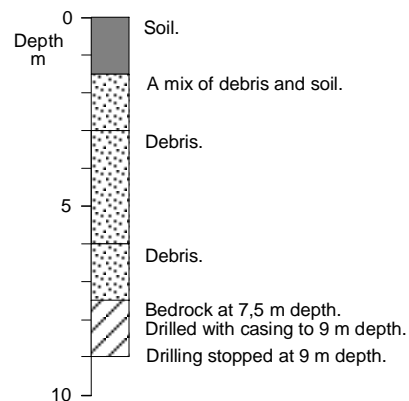
NL - 41

East: 737894,1 North: 523467,5 Elev: 167,0 m a.s.l.
Vertical rotary percussion drilling with 3" button bits and air flush. Casing to 9 m depth.



NL - 42

East: 737939,4 North: 523495,7 Elev: 154,0 m a.s.l.
Vertical rotary percussion drilling with 3" button bits and air flush. Casing to 9 m depth.



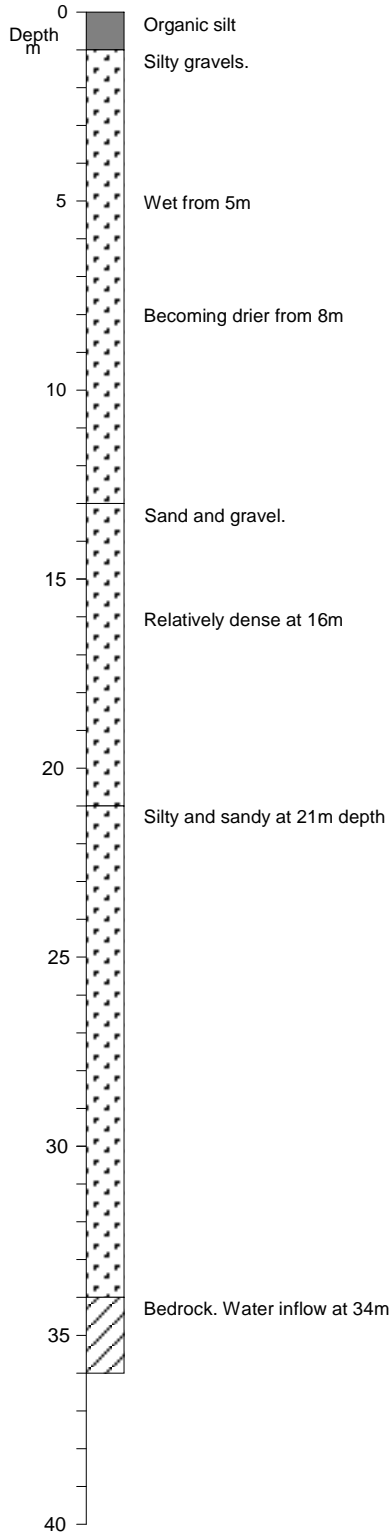
Legend

- Soil
- Silt
- Gravel
- Scoria
- Bedrock basalt
-

NL-01

X:736234,9
Y:523675,2
Elev: 211,1 m a.s.l.

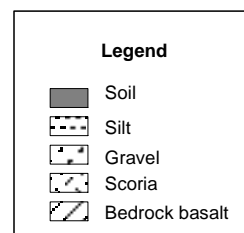
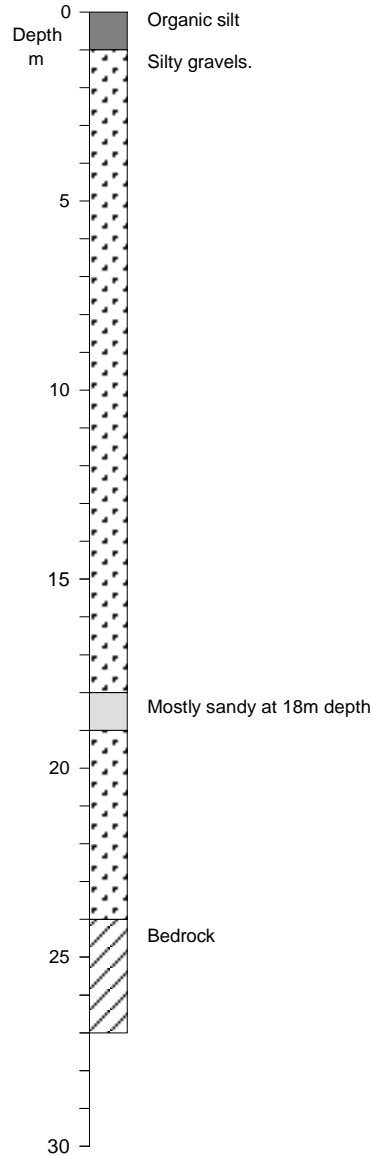
Vertical rotary percussion drilling with 3" button bits and air flush. Casing to 9 m depth. Basalt gravel and boulders and heather on surface.



NL - 02

X:736220,0
Y:523709,1
Elev: 198,3 m a.s.l.

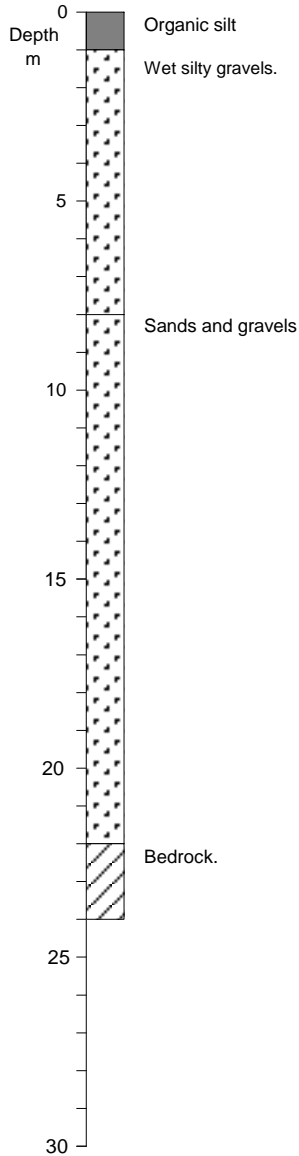
Vertical rotary percussion drilling with 3" button bits and air flush. Casing to 6 m depth. Basalt gravel and boulders and heather on surface.



NL-03

X:736254,1
Y:523749,9
Elev: 184,6 m a.s.l.

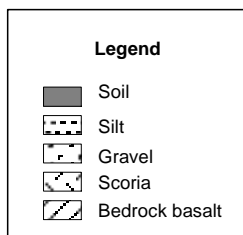
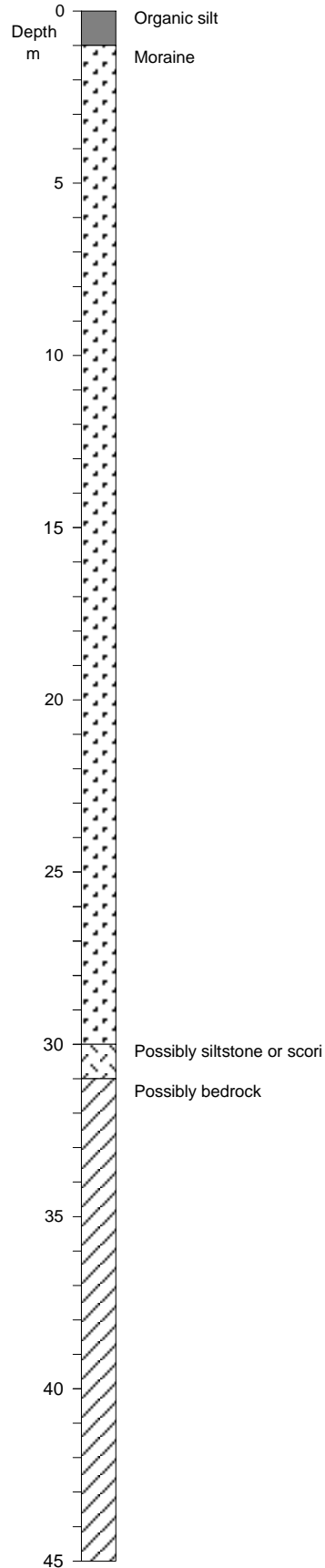
Vertical rotary percussion drilling with. 3" button bits and air flush. Casing to 9 m depth. Basalt gravel and boulders and heather on surface.



NL - 04

X:736.473,0
Y:523.788,5
Elev: 168,5 m a.s.l.

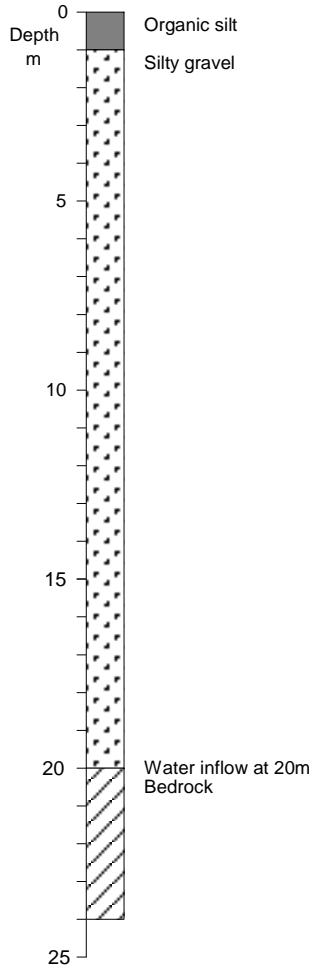
Vertical rotary percussion drilling with. 3" button bits and air flush. Casing to 12 m depth. Basalt gravel and boulders and moss on surface.



NL-05

X:736.461,2
Y:523.710,2
Elev: 184,1 m a.s.l.

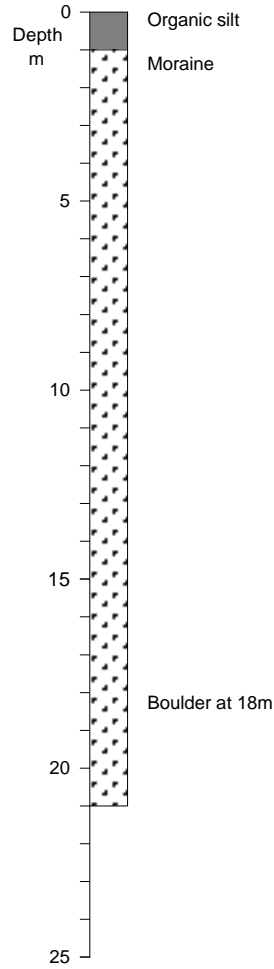
Vertical rotary percussion drilling with 3" button bits and air flush. Casing to 9 m depth. Basalt gravel and boulders and moss on surface.





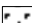

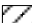
NL - 06

X:736.719,0
Y:523.788,8
Elev: 155,6 m a.s.l.

Vertical rotary percussion drilling with 3" button bits and air flush. Casing to 9 m depth. Basalt gravel and boulders and moss on surface.



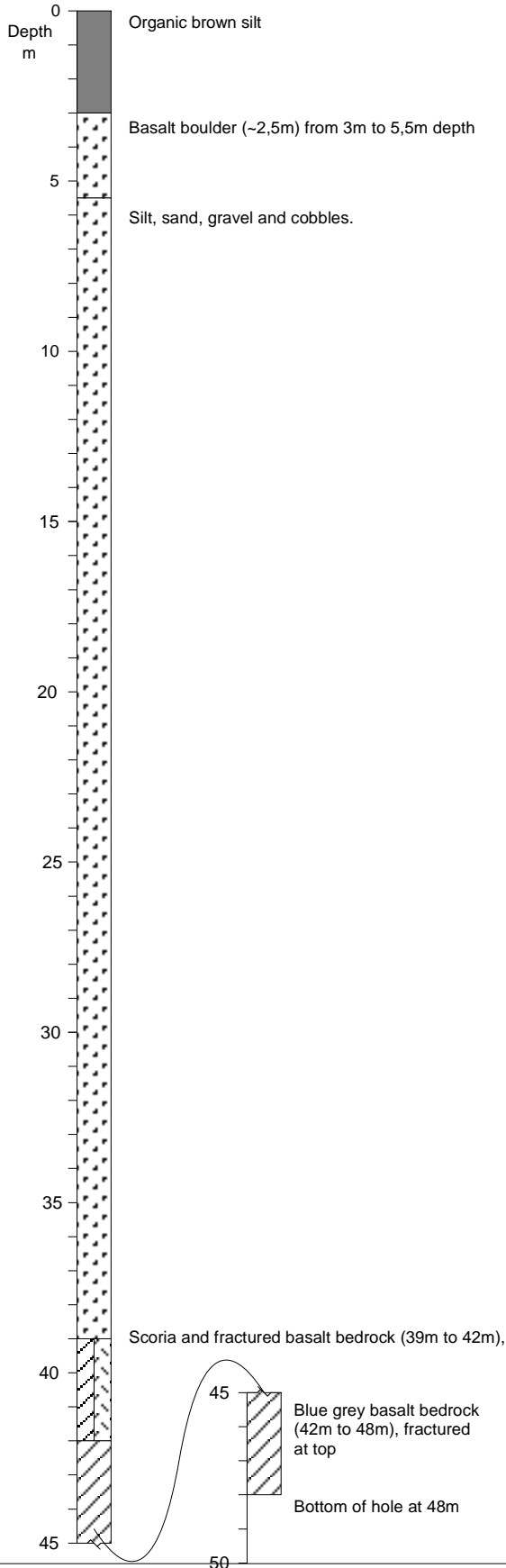
Legend

-  Soil
-  Silt
-  Gravel
-  Scoria
-  Bedrock basalt

NL-07

X:736.700,7
Y:523.691,5
Elev: 178,7 m a.s.l.

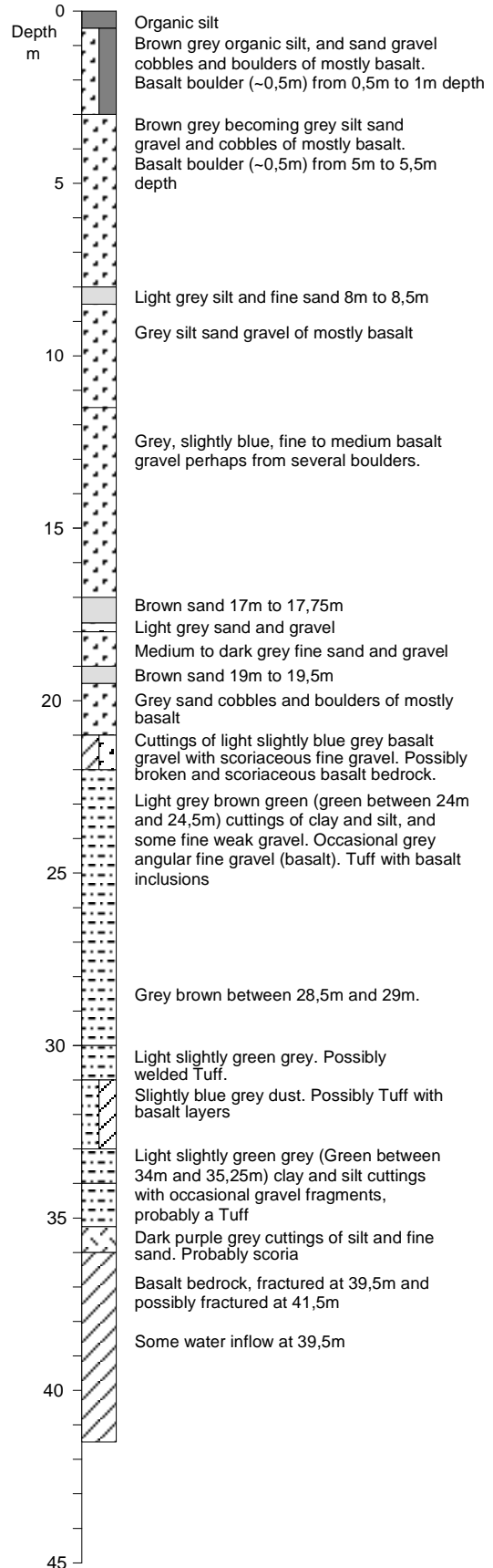
Vertical rotary percussion drilling with 3" button bits and air flush. Casing to 6 m depth. Basalt gravel and boulders and moss on surface.



NL-08

X:736.690,8
Y:523.595,2
Elev: 205,8 m a.s.l.

Vertical rotary percussion drilling with 3" button bits and air flush. Casing to 9 m depth. Basalt gravel and boulders and moss on surface.

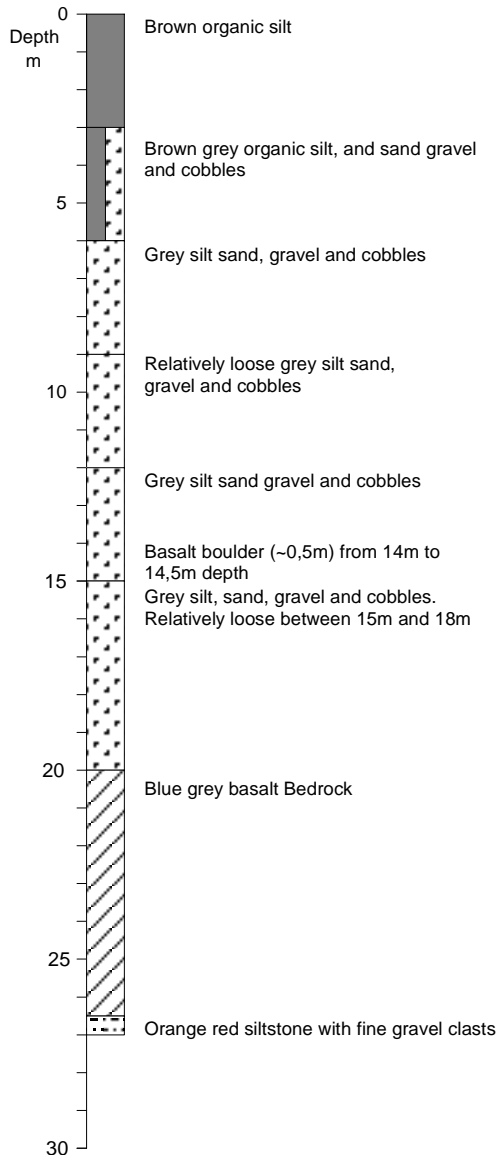


NL - 09

X:736.890,8
Y:523.515,4

Elev: 222,3 m a.s.l.

Vertical rotary percussion drilling with. 3" button bits and air flush. Casing to 9 m depth. Basalt gravel and boulders and moss on surface.

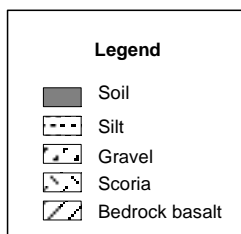
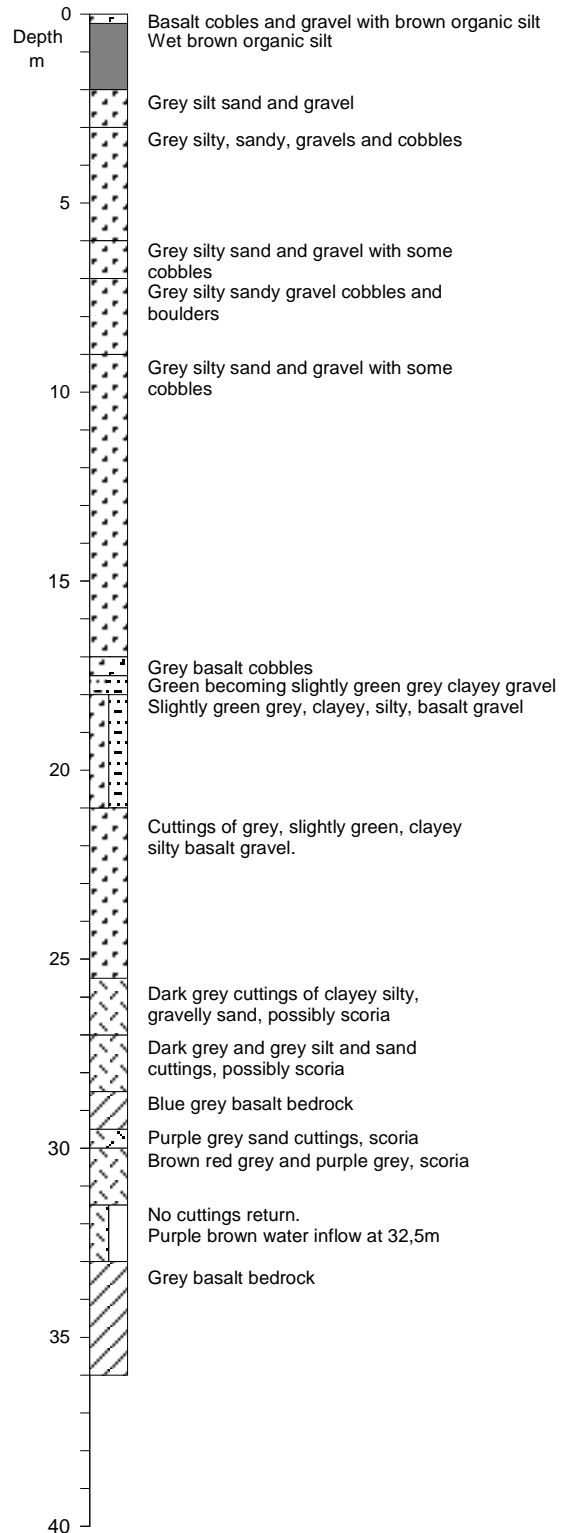


NL-10

X:736.933,6
Y:523.615,3

Elev: 191,0 m a.s.l.

Vertical rotary percussion drilling with. 3" button bits and air flush. Casing to 9 m depth. Basalt gravel and boulders and moss on surface.



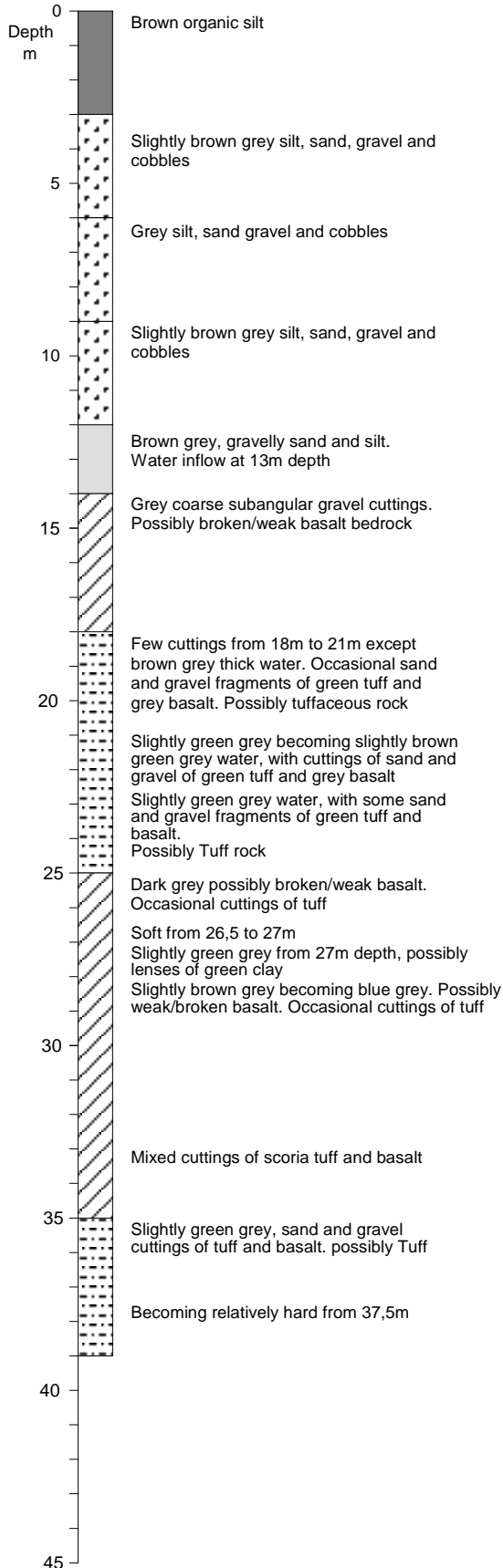
NL - 11

X:737.000,9

Y:523.517,4

Elev: 214,7 m a.s.l.

Vertical rotary percussion drilling with 3" button bits and air flush. Casing to 9 m depth. Basalt gravel and boulders and moss on surface.



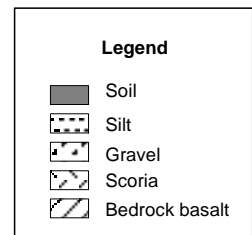
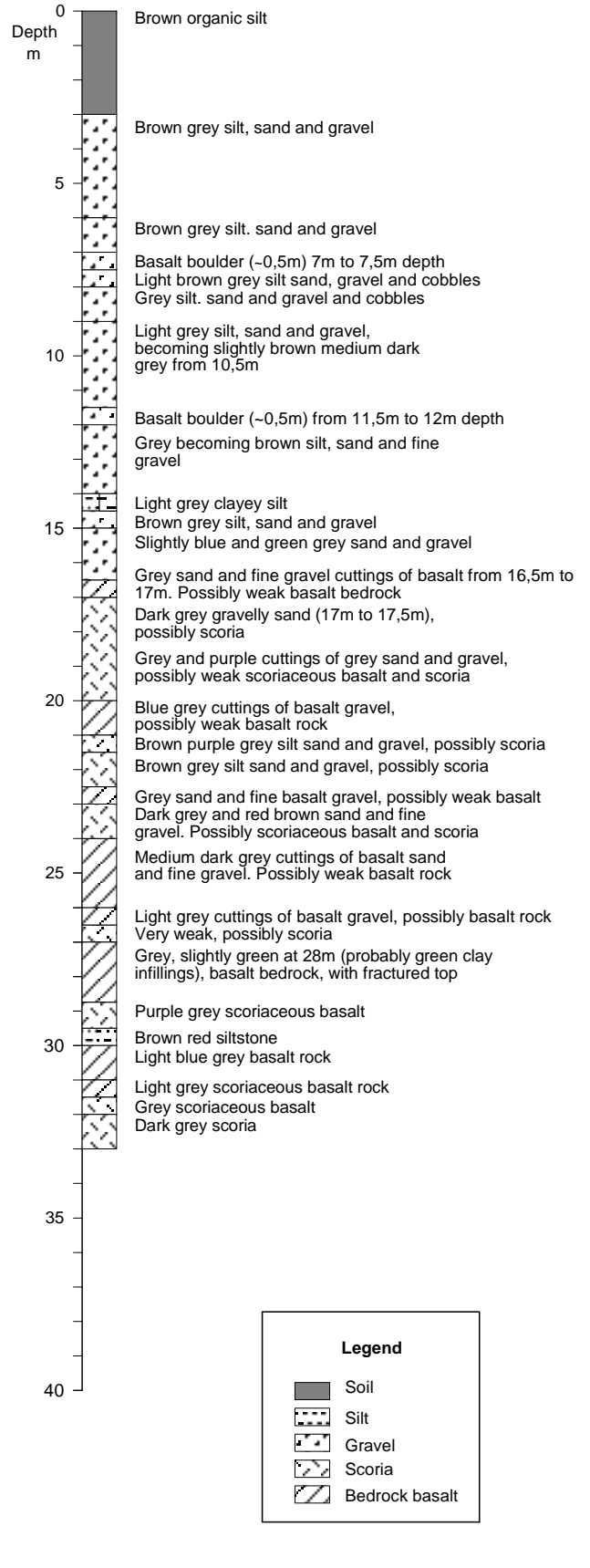
NL-12

X:736.734,0

Y:523.559,9

Elev: 218,2 m a.s.l.

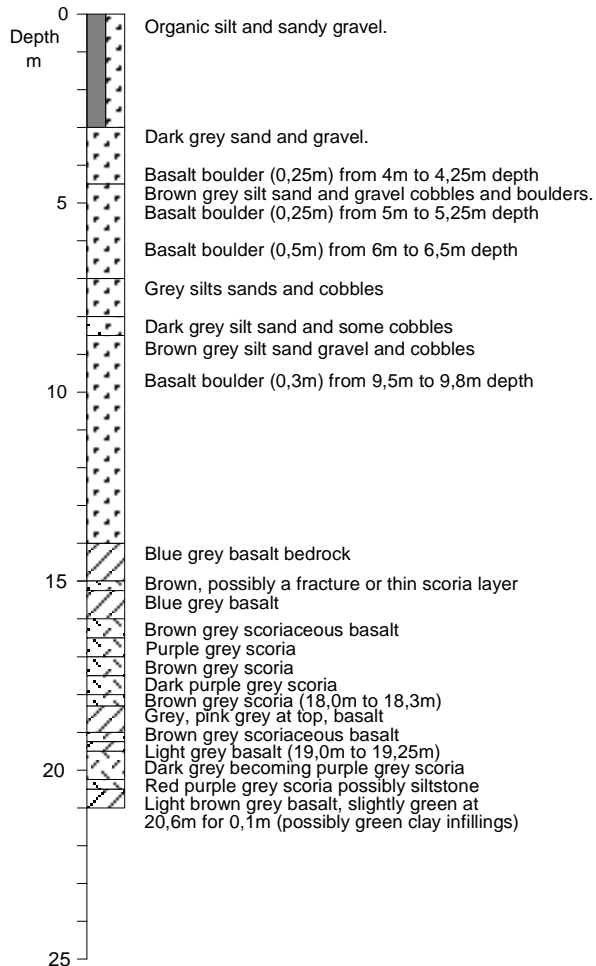
Vertical rotary percussion drilling with 3" button bits and air flush. Casing to 9 m depth. Basalt gravel and boulders and moss on surface.



NL - 15

X:736.458,3
Y:523.569,0
Elev: 233,1 m a.s.l.

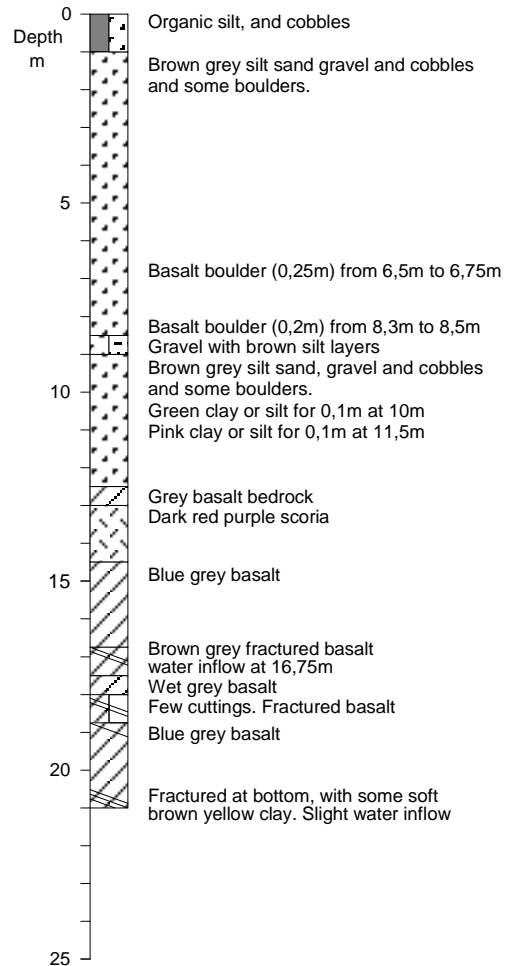
Vertical rotary percussion drilling with. 3" button bits and air flush. Casing to 9 m depth. Basalt gravel and boulders and moss on surface.



NL - 16

X:736.372,1
Y:523.590,6
Elev: 232,6 m a.s.l.

Vertical rotary percussion drilling with. 3" button bits and air flush. Casing to 9 m depth. Basalt gravel and boulders and moss on surface.



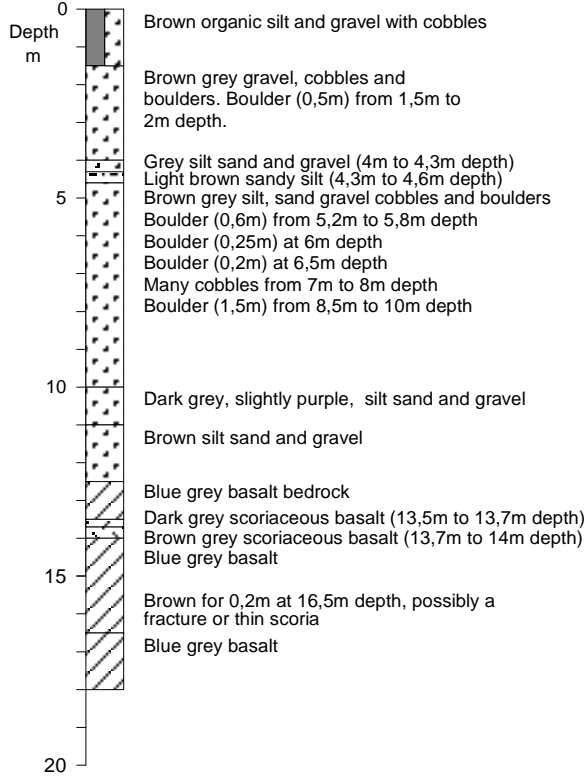
Legend

- Soil
- Silt
- Gravel
- Scoria
- Bedrock basalt

NL-17

X:736.556,2
Y:523.590,6
Elev: 218,2 m a.s.l.

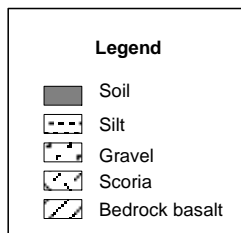
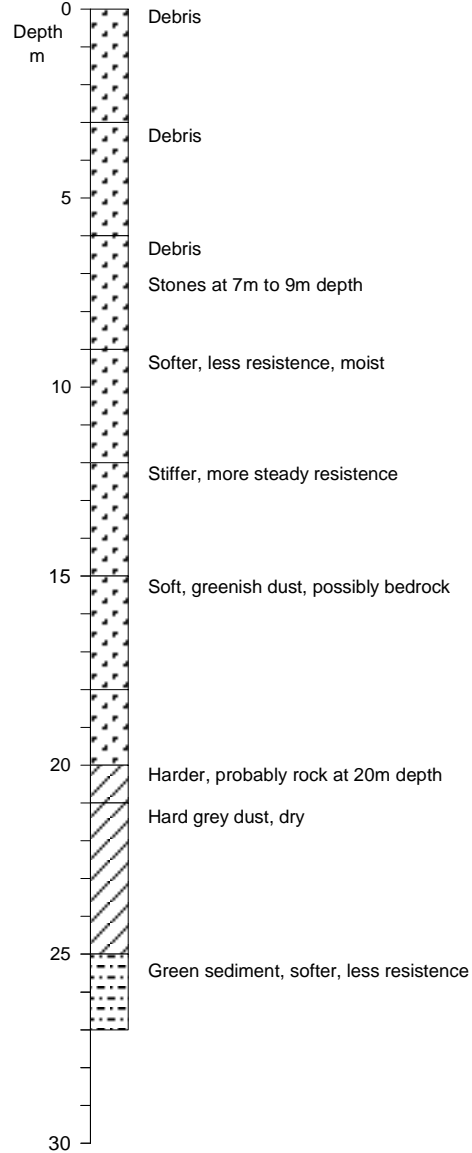
Vertical rotary percussion drilling with 3" button bits and air flush. Casing to 6 m depth. Basalt gravel and boulders and moss on surface.



NL - 18

X:736.578,4
Y:523.670,7
Elev: 192,1 m a.s.l.

Vertical rotary percussion drilling with 3" button bits and air flush. Casing to 9 m depth. Basalt gravel and boulders and moss on surface.



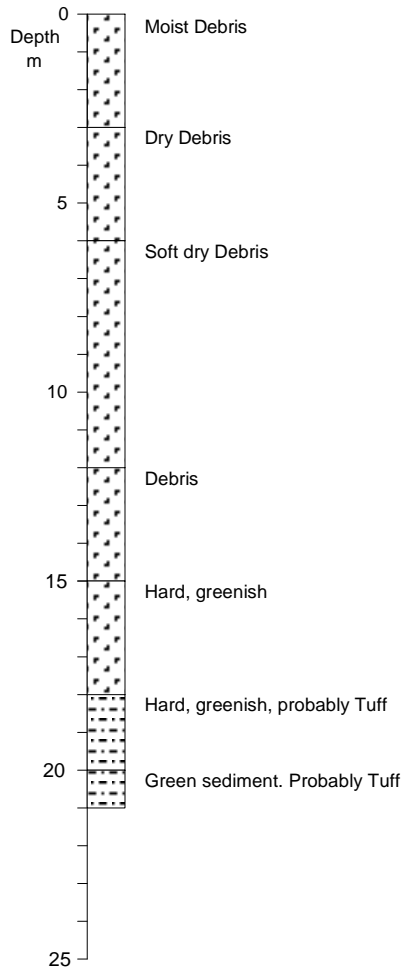
NL-19

X:736.636,2

Y:523.668,1

Elev: 191,0 m a.s.l.

Vertical rotary percussion drilling with 3" button bits and air flush. Casing to 9 m depth. Basalt gravel and boulders and moss on surface.



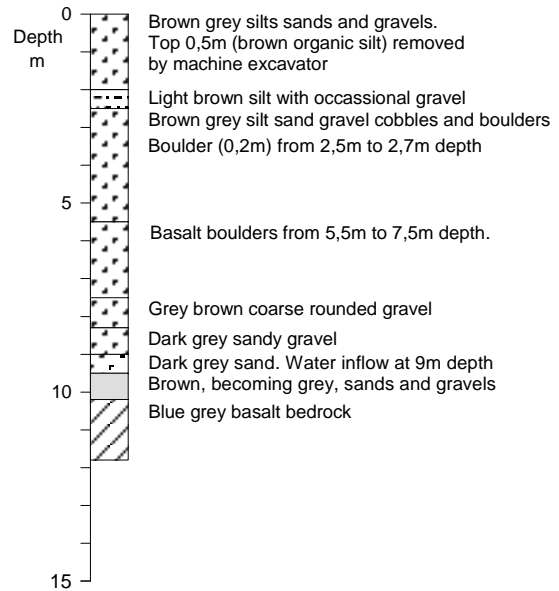
NL-20 (Same location as NF-6)

X:736.533,5






Y:523.527,5

Elev: 237,8 m a.s.l.

Vertical rotary percussion drilling with 3" button bits and air flush. Casing to 6 m depth. Basalt gravel and boulders and moss on surface.



Legend

-  Soil
-  Silt
-  Gravel
-  Scoria
-  Bedrock basalt

Fannardalur north slope
Percussion drilling NL - 21

Scale (vertical)
1:200

Design AgG
Drawn TW
Checked AgG
Approved AgG

NL-21

X:736.428,9

Y:524.389,5

Elev: 193,0 m a.s.l.

Vertical rotary percussion drilling with 3" button bits and air flush. Casing to 21 m depth.

